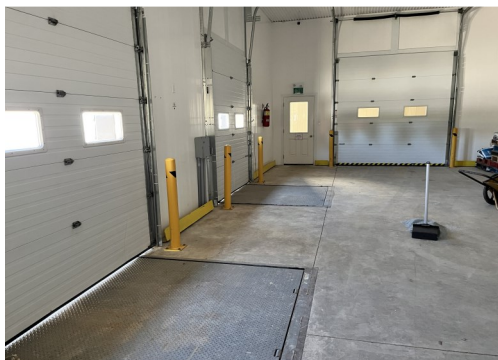


2191

FOR LEASE TEMPERATURE CONTROLLED FACILITY

ARTHUR STREET NORTH, ELMIRA



AVAILABILITY

~ 8,500 SQ FT
(UNIT A)

ZONING

ZONE A;
AGRICULTURAL

LEASE RATE

\$12.00/SQ FT NET

ADDITIONAL RENT

\$2.00/SQ FT

POSSESSION

IMMEDIATE

FEATURES

- Located on Arthur Street, near the Florpine Road intersection just outside of Elmira
- 8,500 sq ft approx. of temperature controlled storage and packing facility
- Additional storage areas available
- 2 dock level and 1 drive-in loading doors
- North Elmira offers easy access to Waterloo, Guelph, Listowel, Stratford and surrounding rural communities
- Additional rent includes taxes, maintenance and utilities

MICHAEL CONRAD
SALES REPRESENTATIVE
MIKE@COUPALMARKOU.COM
519-742-7000 x 105

MATT DICKSON
SALES REPRESENTATIVE
MATT@COUPALMARKOU.COM
519-742-7000 x 104

COUPAL MARKOU COMMERCIAL
REAL ESTATE INC.
150 KING STREET SOUTH
WATERLOO, ONTARIO N2J 1P6
OFFICE 519-742-7000
FAX 519-742-7070



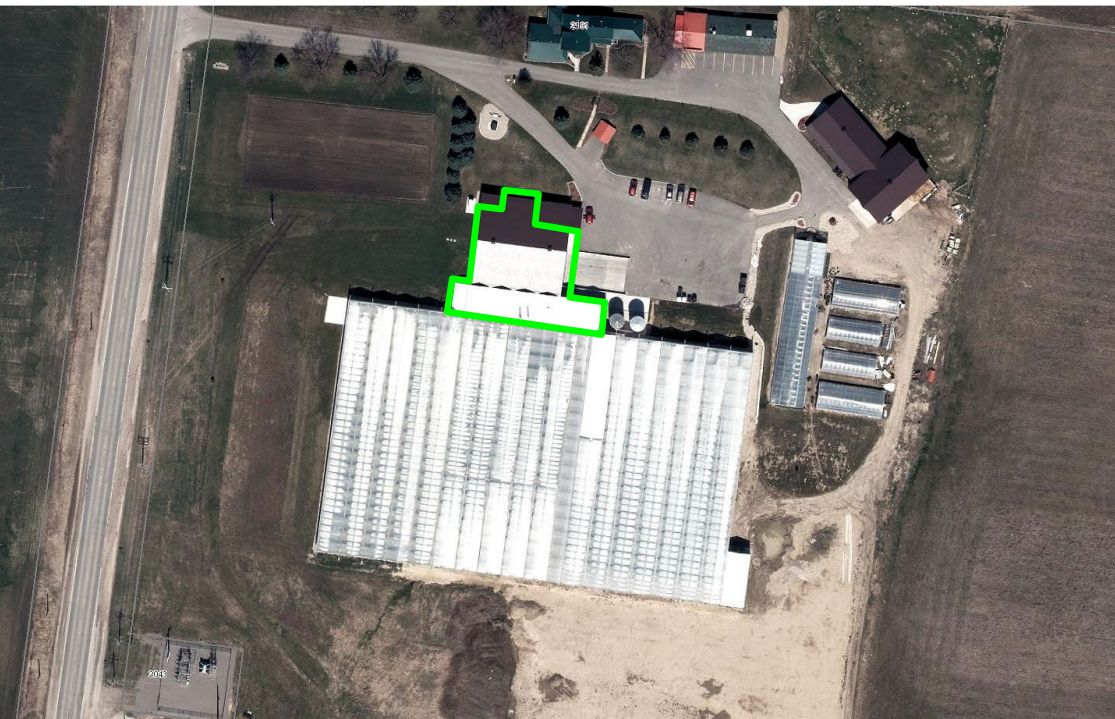
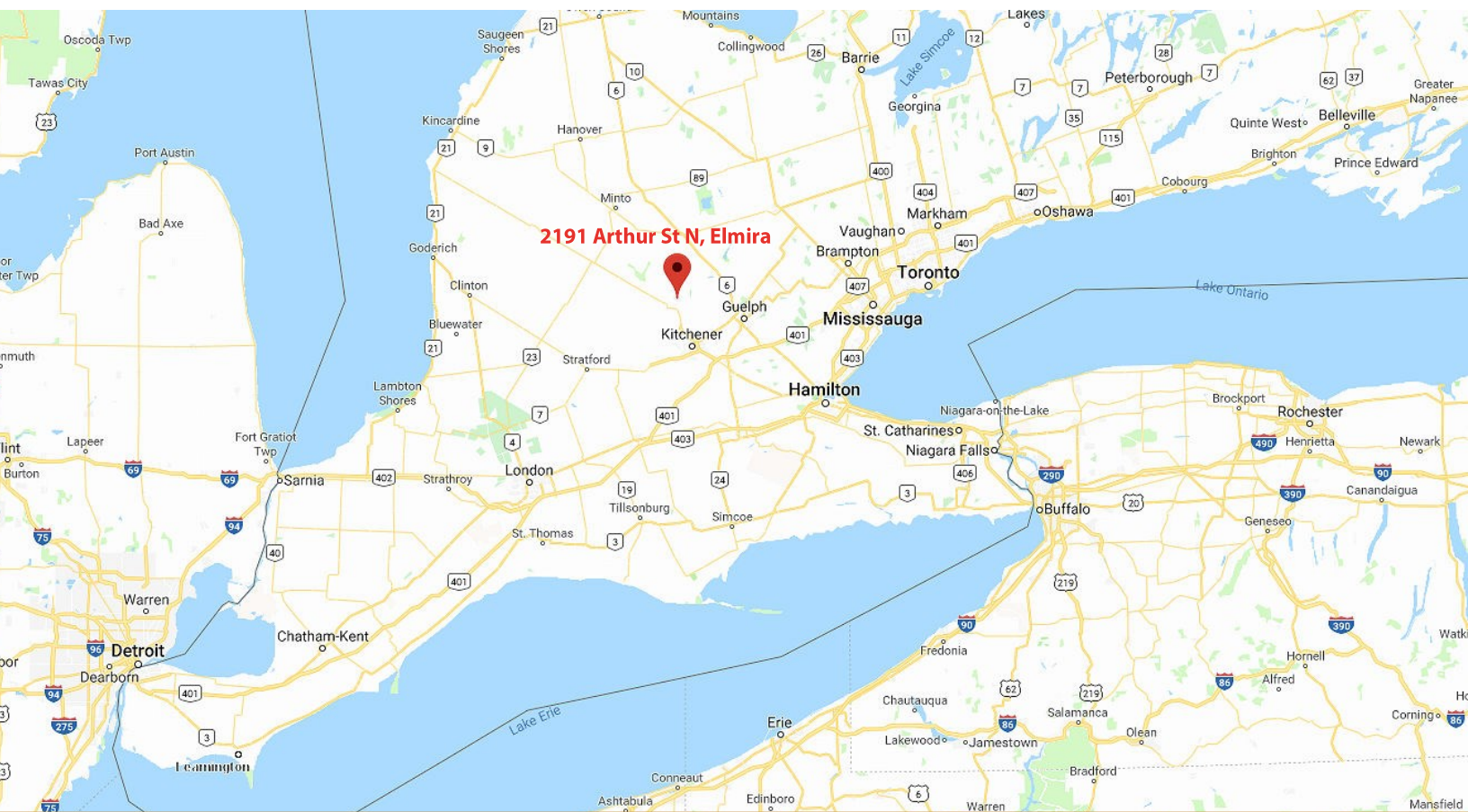
www.coupalmarkou.com

2191

TEMPERATURE CONTROLLED FACILITY

FOR LEASE

ARTHUR STREET NORTH, ELMIRA



MICHAEL CONRAD
SALES REPRESENTATIVE
MIKE@COUPALMARKOU.COM
519-742-7000 x 105

MATT DICKSON
SALES REPRESENTATIVE
MATT@COUPALMARKOU.COM
519-742-7000 x 104

COUPAL MARKOU COMMERCIAL
REAL ESTATE INC.
150 KING STREET SOUTH
WATERLOO, ONTARIO N2J 1P6
OFFICE 519-742-7000
FAX 519-742-7070

Coupal Markou

Commercial Real Estate Inc., Brokerage

www.coupalmarkou.com

This disclaimer shall apply to Coupal Markou Commercial Real Estate Inc., Brokerage, to include all employees and independent contractors. The information set out herein is for advertising purposes, and any images, assumptions, estimates and property details have been obtained from sources deemed to be reliable. No warranty or representation is made as to its accuracy, correctness and completeness of the information, being subject to errors, omissions, conditions, prior sale / lease, withdrawal or other changes without notice. The recipient of the information should