

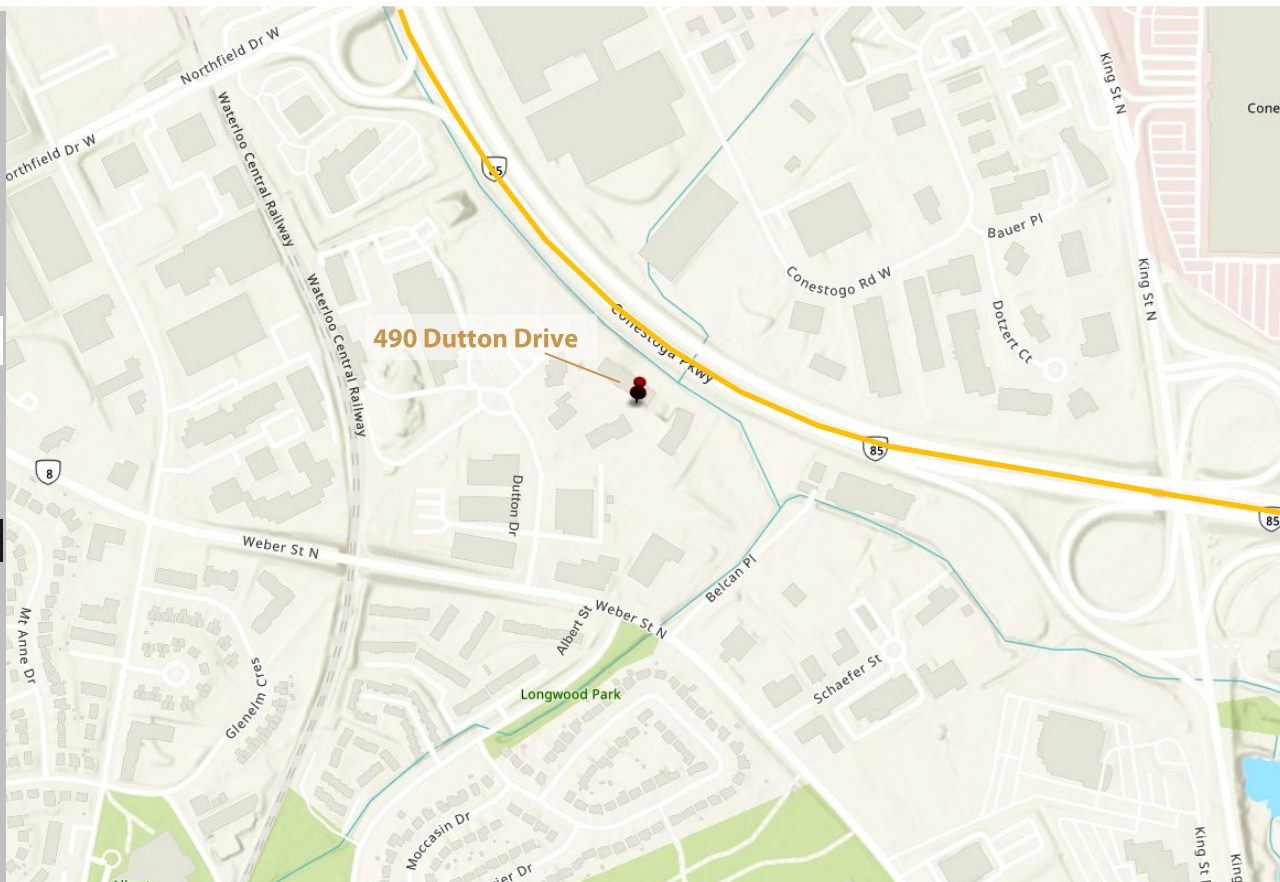
490

FOR SALE
OFFICE CONDO IN WATERLOO BUSINESS PARK
DUTTON DRIVE, UNIT B12, WATERLOO

490

FOR SALE
OFFICE CONDO IN WATERLOO BUSINESS PARK
DUTTON DRIVE, UNIT B12, WATERLOO

Nearby Amenities:



This disclaimer shall apply to Coupal Markou Commercial Real Estate Inc., Brokerage, to include all employees and independent contractors. The information set out herein is for advertising purposes, and any images, assumptions, estimates and property details have been obtained from sources deemed to be reliable. No warranty or representation is made as to its accuracy, correctness and completeness of the information, being subject to errors, omissions, conditions, prior sale / lease, withdrawal or other changes without notice. The recipient of the information should conduct its own inquiries and investigations prior to placing any reliance upon the information. MLS

MICHAEL CONRAD
SALES REPRESENTATIVE
MIKE@COUPALMARKOU.COM
519-742-7000 x 105

MATT DICKSON
SALES REPRESENTATIVE
MATT@COUPALMARKOU.COM
519-742-7000 x 104

**COUPAL MARKOU COMMERCIAL
REAL ESTATE INC**
150 KING STREET SOUTH
WATERLOO, ONTARIO N2J 1P6
OFFICE 519-742-7000
FAX 519-742-7070



TOTAL SIZE

2,260 sq ft

PROPERTY TAXES

\$10,488.65/2023

CONDO FEES

\$905.68 Monthly

ZONING

E3-27

SALE PRICE

\$625,000

FEATURES

- * Located on Dutton Dr, off Weber St N in Waterloo
- * 2,260 square feet, Dutton business park office condominium in Waterloo
- * Very good office floor plan consisting of multiple private offices, boardroom, server room, kitchenette and is fully air conditioned
- * Unit features Two washrooms; 1 regular sized and 1 oversized for easier accessibility
- * 5 assigned parking spaces, an additional (1) designated Handicap Parking space out front and ample additional parking in common areas
- * Excellent North Waterloo location near Northfield Hwy #85 interchange
- * Desirable Waterloo zoning
- * Status report available as part of due diligence
- * Immediate possession

MICHAEL CONRAD
SALES REPRESENTATIVE
MIKE@COUPALMARKOU.COM
519-742-7000 x 105

MATT DICKSON
SALES REPRESENTATIVE
MATT@COUPALMARKOU.COM
519-742-7000 x 104

**COUPAL MARKOU COMMERCIAL
REAL ESTATE INC**
150 KING STREET SOUTH
WATERLOO, ONTARIO N2J 1P6
OFFICE 519-742-7000
FAX 519-742-7070



490 DUTTON DRIVE, UNIT B12, WATERLOO

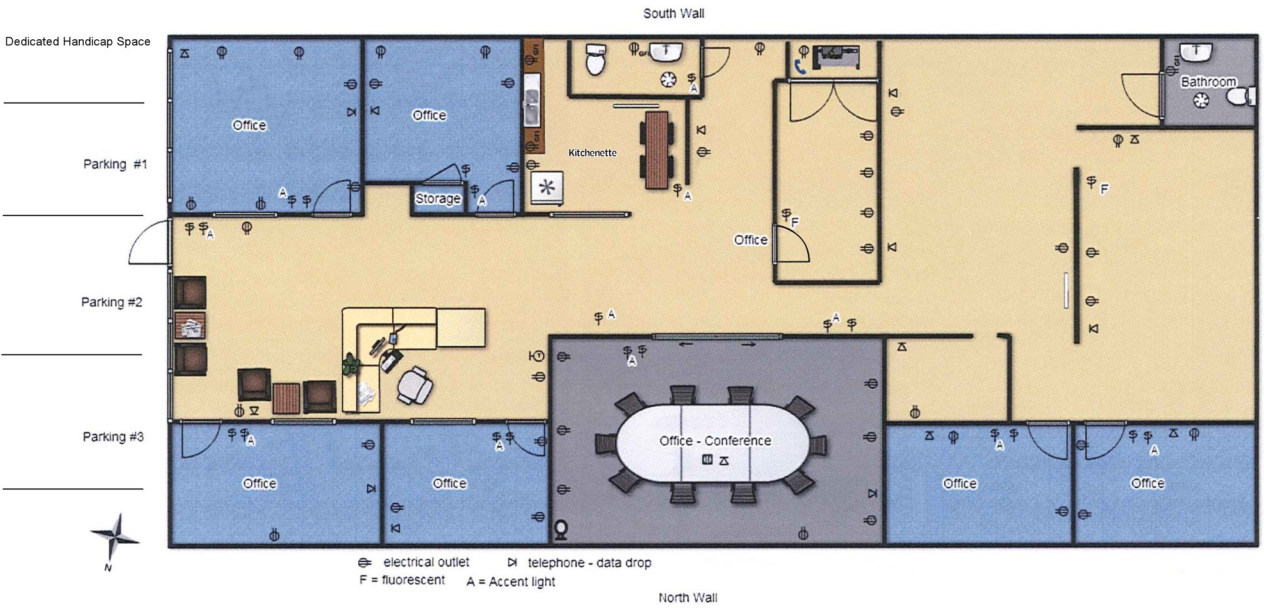
FOR SALE

OFFICE CONDO

Unit B12 - 2,260 Sq Ft

Parking #4

Parking #5



5 Regular + 1 Handicap designated parking spaces

