

2191

ARTHUR STREET NORTH, ELMIRA

FOR LEASE GREENHOUSE FACILITY



AVAILABILITY

~ 90,000 SQ FT

ZONING

ZONE A; AGRICULTURAL

LEASE RATE

\$3.00/SQ FT

ADDITIONAL RENT

TAXES/MAINTENANCE

- Located on Arthur Street, near the Florpine Road intersection just outside of Elmira
- State of the art Agricultural growing facility suitable for Food production
- Fully operational 90,000+/- sq ft greenhouse facility with temperature controlled packing area
- 2 dock level loading doors
- North Elmira offers easy access to Waterloo, Guelph, Listowel, Stratford and surrounding rural communities
- Utilities in addition to the rent
- Taxes estimated at \$20,000/2023

MICHAEL CONRAD
SALES REPRESENTATIVE
MIKE@COUPALMARKOU.COM
519-742-7000 x 105

MATT DICKSON
SALES REPRESENTATIVE
MATT@COUPALMARKOU.COM
519-742-7000 x 104

COUPAL MARKOU COMMERCIAL
REAL ESTATE INC.
150 KING STREET SOUTH
WATERLOO, ONTARIO N2J 1P6
OFFICE 519-742-7000
FAX 519-742-7070

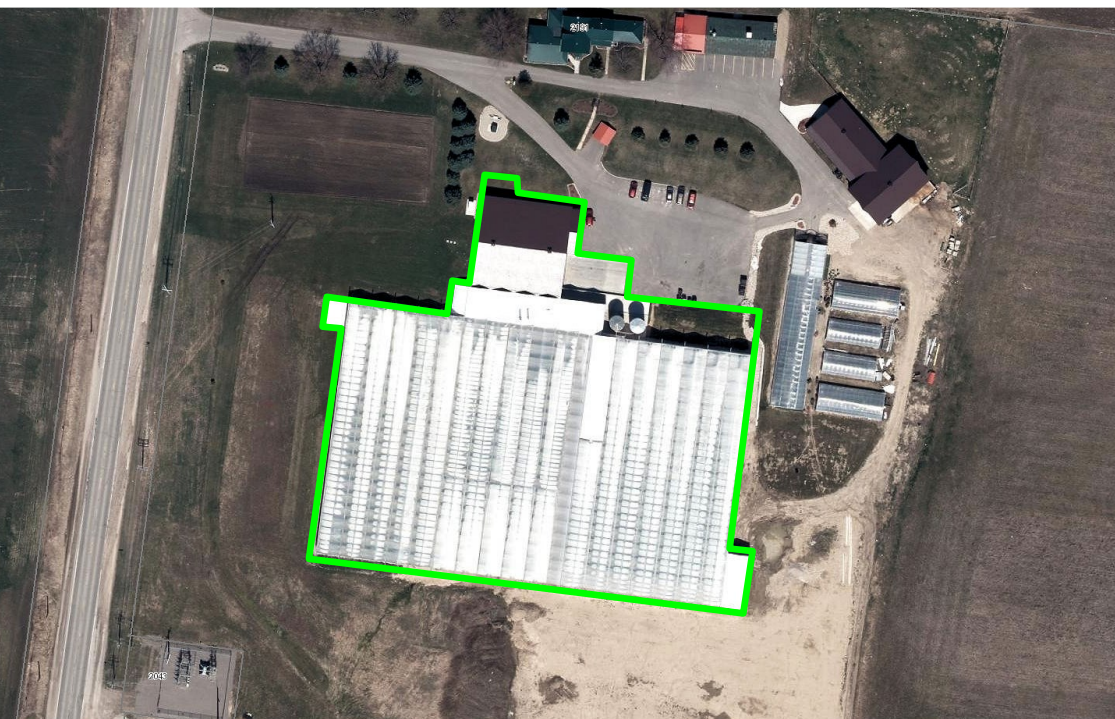
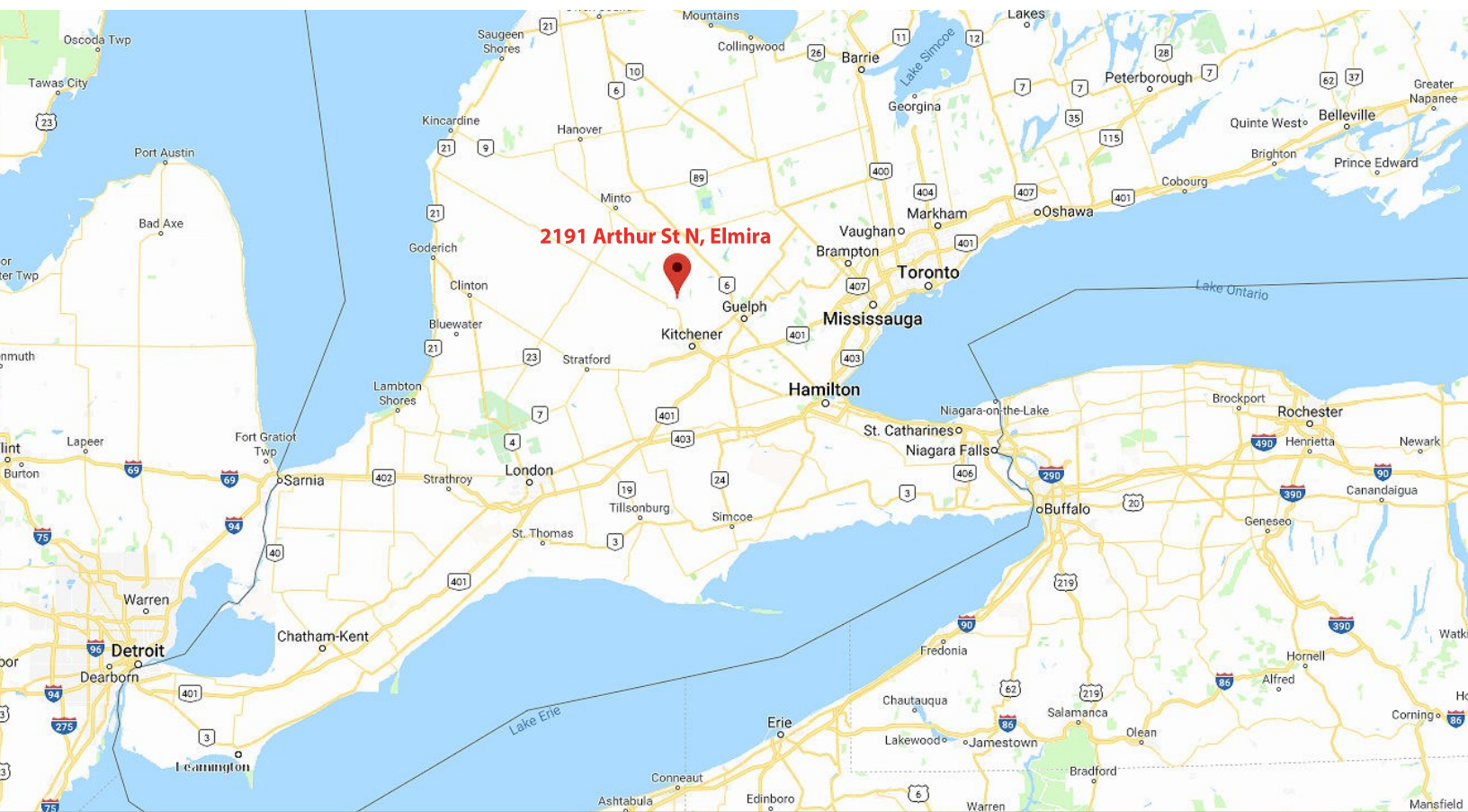


www.coupalmarkou.com

2191

ARTHUR STREET NORTH, ELMIRA

FOR LEASE GREENHOUSE FACILITY



MICHAEL CONRAD
SALES REPRESENTATIVE
MIKE@COUPALMARKOU.COM
519-742-7000 x 105

MATT DICKSON
SALES REPRESENTATIVE
MATT@COUPALMARKOU.COM
519-742-7000 x 104

COUPAL MARKOU COMMERCIAL
REAL ESTATE INC.
150 KING STREET SOUTH
WATERLOO, ONTARIO N2J 1P6
OFFICE 519-742-7000
FAX 519-742-7070

Coupal Markou

Commercial Real Estate Inc., Brokerage

www.coupalmarkou.com

This disclaimer shall apply to Coupal Markou Commercial Real Estate Inc., Brokerage, to include all employees and independent contractors. The information set out herein is for advertising purposes, and any images, assumptions, estimates and property details have been obtained from sources deemed to be reliable. No warranty or representation is made as to its accuracy, correctness and completeness of the information, being subject to errors, omissions, conditions, prior sale / lease, withdrawal or other changes without notice. The recipient of the information should