

TWO

FOR LEASE UPTOWN RETAIL SPACE

KING STREET NORTH, WATERLOO



AVAILABILITY

Unit 4 - 3,318 sq ft

LEASE RATE

Unit 4 - \$15.95/sq ft net

ADDITIONAL RENT

\$9.50/sq ft

ZONING

U1-16

- * Located on the corner of Erb St and King St in Uptown Waterloo
- * Units available in the historic Waterloo Hotel Building
- * Exceptional location near amenities, multiple GRT Routes and LRT line
- * High foot/vehicle traffic
- * Excellent visibility, ample area parking
- * Zoning allows for many uses
- * Unit 4 - Immediate possession

MICHAEL CONRAD
SALES REPRESENTATIVE
MIKE@COUPALMARKOU.COM
519-742-7000 x 105

MATT DICKSON
SALES REPRESENTATIVE
MATT@COUPALMARKOU.COM
519-742-7000 x 104

**COUPAL MARKOU COMMERCIAL
REAL ESTATE INC**
150 KING STREET SOUTH
WATERLOO, ONTARIO N2J 1P6
OFFICE 519-742-7000
FAX 519-742-7070

Coupal Markou

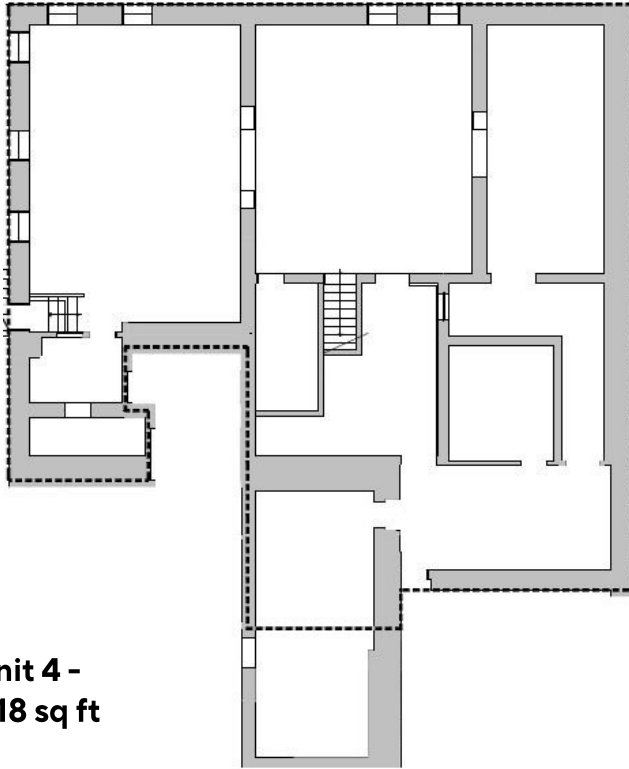
Commercial Real Estate Inc., Brokerage

www.coupalmarkou.com

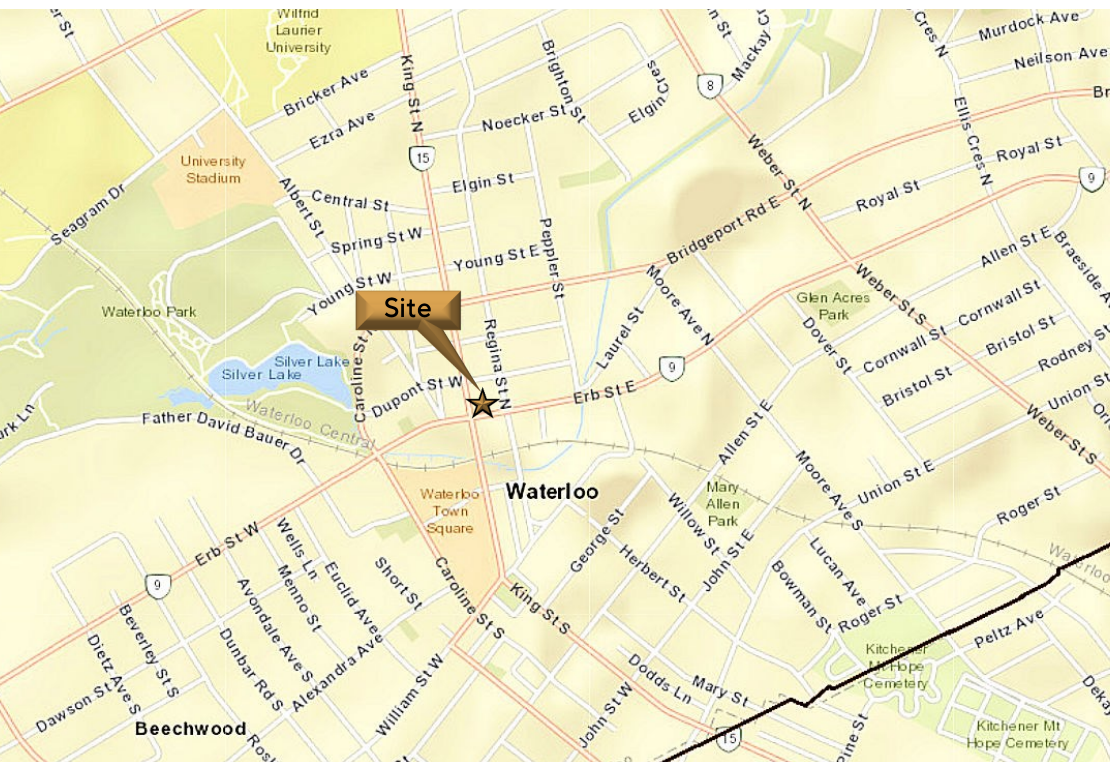
TWO

FOR LEASE UPTOWN RETAIL SPACE

KING STREET NORTH, WATERLOO



Unit 4 -
3,318 sq ft



MICHAEL CONRAD
SALES REPRESENTATIVE
MIKE@COUPALMARKOU.COM
519-742-7000 x 105

MATT DICKSON
SALES REPRESENTATIVE
MATT@COUPALMARKOU.COM
519-742-7000 x 104

**COUPAL MARKOU COMMERCIAL
REAL ESTATE INC**
150 KING STREET SOUTH
WATERLOO, ONTARIO N2J 1P6
OFFICE 519-742-7000
FAX 519-742-7070



This disclaimer shall apply to Coupal Markou Commercial Real Estate Inc., Brokerage, to include all employees and independent contractors. The information set out herein is for advertising purposes, and any images, assumptions, estimates and property details have been obtained from sources deemed to be reliable. No warranty or representation is made as to its accuracy, correctness and completeness of the information, being subject to errors, omissions, conditions, prior sale / lease, withdrawal or other changes without notice. The recipient of the information should conduct its own inquiries and investigations prior to placing any reliance upon the information. MLS