

FOR LEASE

7

WALK-UP RETAIL/COMMERCIAL SERVICE SPACE  
GRAND AVENUE SOUTH, CAMBRIDGE



Unit 111



Unit 114

**AVAILABILITY**

Unit 111 - 849 sq ft  
Unit 114 - Under Contract

**LEASE RATE**

Unit 111 - \$21.95/sq ft Net

**ADDITIONAL RENT**

\$8.30/sq ft  
*Plus Utilities*

**ZONING**

(F)C1RM1

**POSSESSION**

Unit 111 - 60-90 days

- \* Located on Grand Ave S/Melville St S, between Salisbury Ave and Main St in Galt Cambridge
- \* Retail/Service commercial space in well maintained building
- \* Unit 111 is Currently operating as a treat and toy shop
- \* Wide range of uses possible with-in the zoning
- \* High vehicle and foot traffic with great street exposure
- \* Highly desired location, down the street from the gaslight district, close to transit and many other amenities

MATT DICKSON  
SALES REPRESENTATIVE  
[MATT@COUPALMARKOU.COM](mailto:MATT@COUPALMARKOU.COM)  
519-742-7000 x 104

MICHAEL CONRAD  
SALES REPRESENTATIVE  
[MIKE@COUPALMARKOU.COM](mailto:MIKE@COUPALMARKOU.COM)  
519-742-7000 x 105

**COUPAL MARKOU COMMERCIAL REAL ESTATE INC**  
150 KING STREET SOUTH  
WATERLOO, ONTARIO N2J 1P6  
OFFICE 519-742-7000  
FAX 519-742-7070



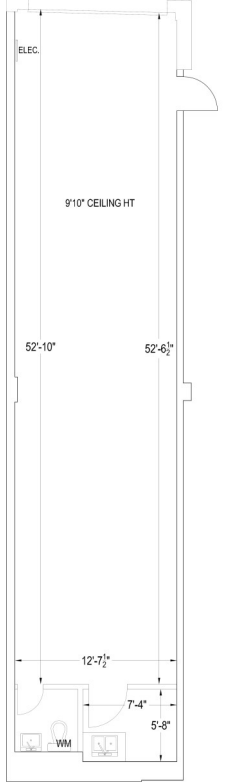


FOR LEASE

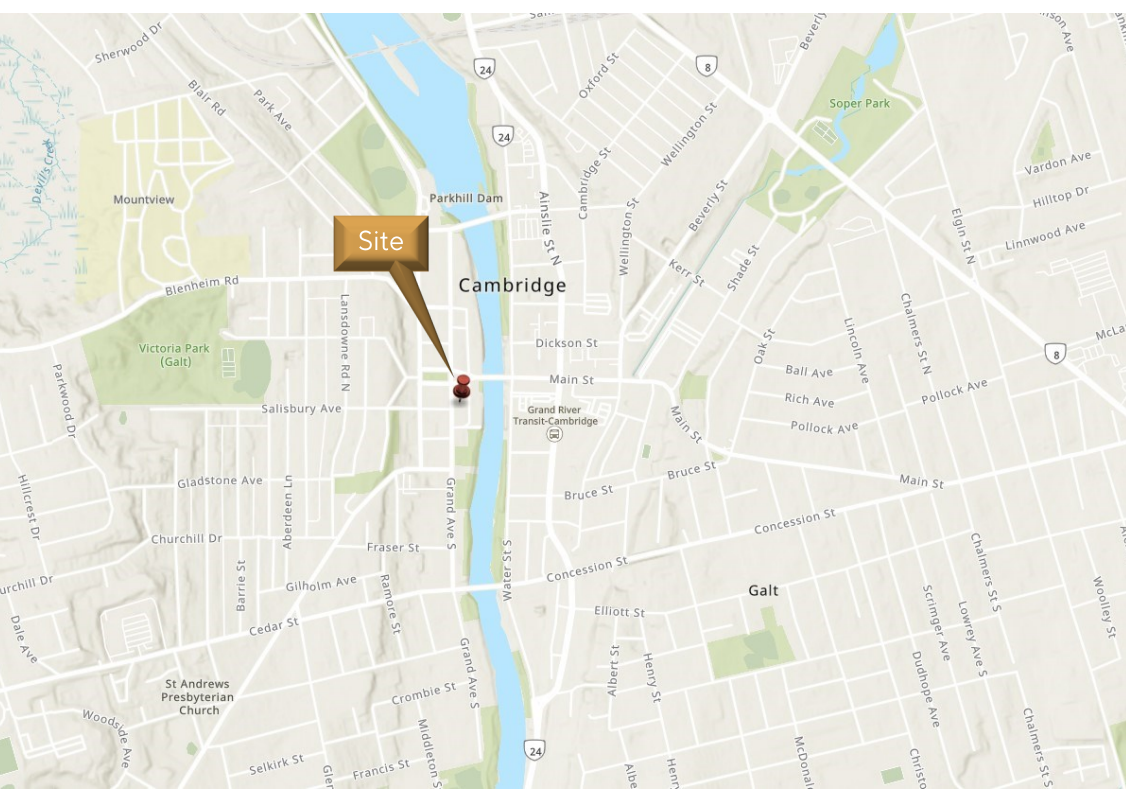
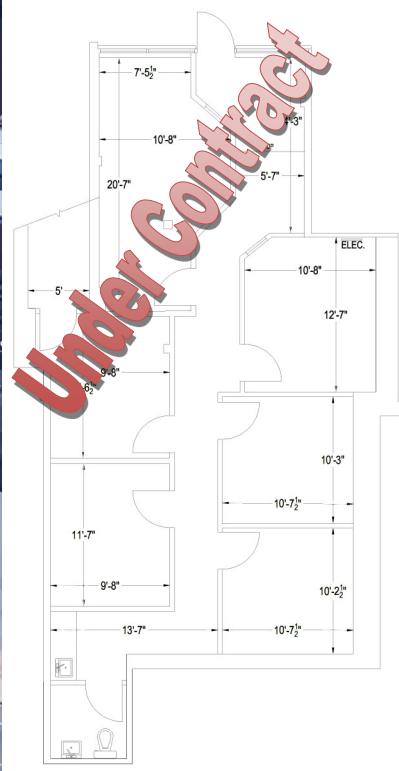
7

WALK-UP RETAIL/COMMERCIAL SERVICE SPACE  
GRAND AVENUE SOUTH, CAMBRIDGE

Unit 111 - 849 sq ft



Unit 114 - 1,337 sq ft



MATT DICKSON  
SALES REPRESENTATIVE  
[MATT@COUPALMARKOU.COM](mailto:MATT@COUPALMARKOU.COM)  
519-742-7000 x 104

MICHAEL CONRAD  
SALES REPRESENTATIVE  
[MIKE@COUPALMARKOU.COM](mailto:MIKE@COUPALMARKOU.COM)  
519-742-7000 x 105

**COUPAL MARKOU COMMERCIAL REAL ESTATE INC**  
150 KING STREET SOUTH  
WATERLOO, ONTARIO N2J 1P6  
OFFICE 519-742-7000  
FAX 519-742-7070



This disclaimer shall apply to Coupal Markou Commercial Real Estate Inc., Brokerage, to include all employees and independent contractors. The information set out herein is for advertising purposes, and any images, assumptions, estimates and property details have been obtained from sources deemed to be reliable. No warranty or representation is made as to its accuracy, correctness and completeness of the information, being subject to errors, omissions, conditions, prior sale / lease, withdrawal or other changes without notice. The recipient of the information should conduct its own inquiries and investigations prior to placing any reliance upon the information. MLS