

FOR LEASE

120

FLEXIBLE TECH/OFFICE SPACE

RANDALL DRIVE, 2F, WATERLOO



AVAILABILITY

5,331 sq ft

LEASE RATE

\$9.95/sq ft net

ADDITIONAL RENT

\$6.20/sq ft
Plus utilities (2023)

ZONING

E1-27

POSSESSION

60 DAYS

FEATURES

- * Great location on high profile corner at Randall Drive and Weber Street North
- * Second floor office space in unique design building
- * Mix of open and private offices
- * Close to Conestoga Expressway with easy access to surrounding towns: Elmira, Fergus and Guelph
- * Many nearby amenities including Conestoga Mall
- * Located directly on bus route and near Northfield LRT Station
- * Signage and free parking available

MICHAEL CONRAD
SALES REPRESENTATIVE
MIKE@COUPALMARKOU.COM
519-742-7000 x 105

MATT DICKSON
SALES REPRESENTATIVE
MATT@COUPALMARKOU.COM
519-742-7000 x 104

**COUPAL MARKOU COMMERCIAL
REAL ESTATE INC**
150 KING STREET SOUTH
WATERLOO, ONTARIO N2J 1P6
OFFICE 519-742-7000
FAX 519-742-7070

Coupal Markou
Commercial Real Estate Inc., Brokerage
www.coupalmarkou.com

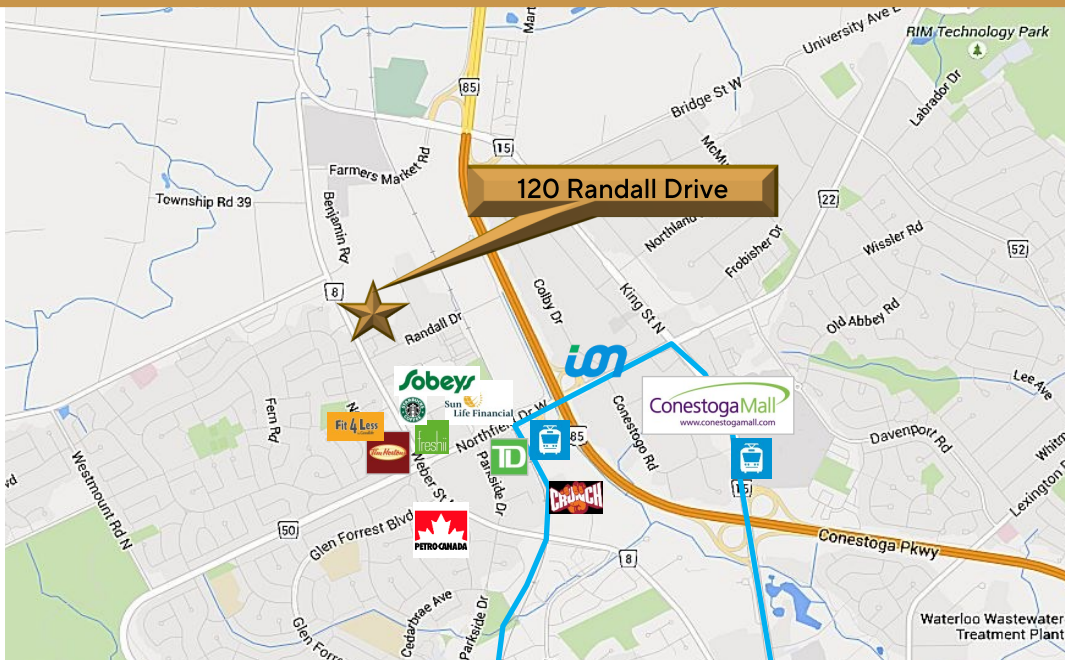
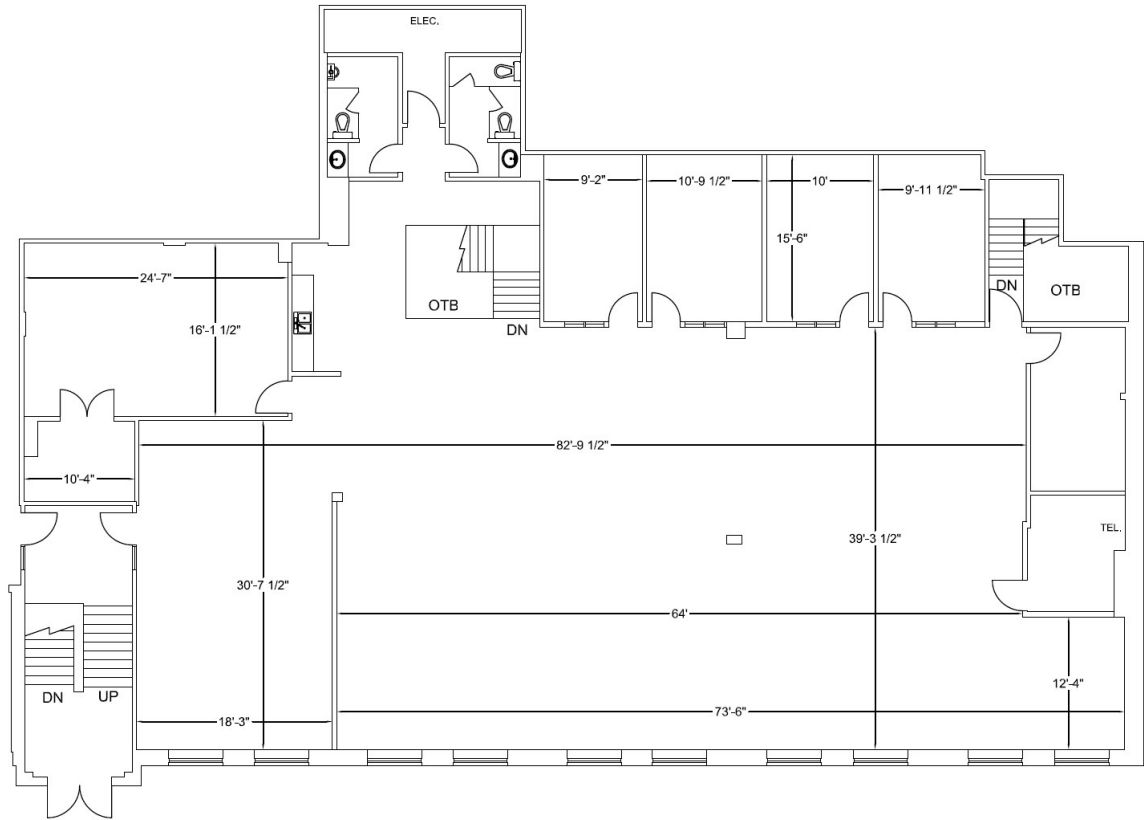
FOR LEASE

120

FLEXIBLE TECH/OFFICE SPACE

RANDALL DRIVE, 2F, WATERLOO

Unit 2F - Upper Office Space - 5,331 sq ft



MICHAEL CONRAD
SALES REPRESENTATIVE
MIKE@COUPALMARKOU.COM
519-742-7000 x 105

MATT DICKSON
SALES REPRESENTATIVE
MATT@COUPALMARKOU.COM
519-742-7000 x 104

**COUPAL MARKOU COMMERCIAL
REAL ESTATE INC**
150 KING STREET SOUTH
WATERLOO, ONTARIO N2J 1P6
OFFICE 519-742-7000
FAX 519-742-7070

Coupal Markou
Commercial Real Estate Inc., Brokerage
www.coupalmarkou.com

This disclaimer shall apply to Coupal Markou Commercial Real Estate Inc., Brokerage, to include all employees and independent contractors. The information set out herein is for advertising purposes, and any images, assumptions, estimates and property details have been obtained from sources deemed to be reliable. No warranty or representation is made as to its accuracy, correctness and completeness of the information, being subject to errors, omissions, conditions, prior sale / lease, withdrawal or other changes without notice. The recipient of the information should conduct its own inquiries and investigations prior to placing any reliance upon the information. MLS