

# 1193

## STAND ALONE COMMERCIAL BUILDING

### QUEENS BUSH ROAD, WELLESLEY

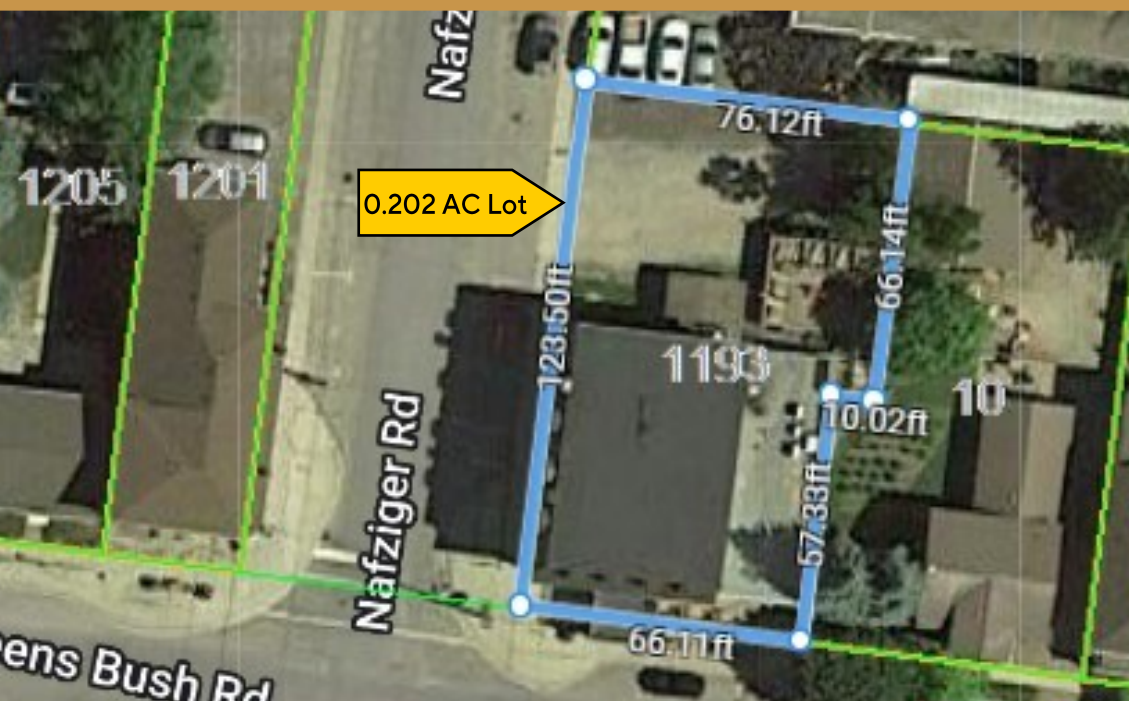
# FOR SALE

# 1193

## STAND ALONE COMMERCIAL BUILDING

### QUEENS BUSH ROAD, WELLESLEY

# FOR SALE



THEO PAPADOPOULOS  
SALES REPRESENTATIVE  
THEO@COUPALMARKOU.COM  
519-742-7000 X 103

MICHAEL CONRAD  
SALES REPRESENTATIVE  
MIKE@COUPALMARKOU.COM  
519-742-7000 X 105

**COUPAL MARKOU COMMERCIAL REAL ESTATE INC.**  
150 KING STREET SOUTH  
WATERLOO, ONTARIO N2J 1P6  
OFFICE → 519-742-7000  
FAX → 519-742-7070



**SIZE**  
8,705 SQ FT

**PROPERTY TAXES**  
\$7,673.30/2023

**ZONING**  
UC  
URBAN COMMERCIAL

**SALE PRICE**  
\$795,000

#### FEATURES:

- \* Located at the main intersection of Nafziger Rd and Queens Bush Rd in Wellesley
- \* 8,705 sq ft stand alone historic building for Sale
- \* 3,700 sq ft main floor currently set up as a restaurant/pub, fixtures included
- \* Potential for many other retail or office uses
- \* the second and third floor are unfinished and will require improving, residential income potential or a live work opportunity
- \* Includes 2 outdoor patios
- \* Immediate possession

THEO PAPADOPOULOS  
SALES REPRESENTATIVE  
THEO@COUPALMARKOU.COM  
519-742-7000 X 103

MICHAEL CONRAD  
SALES REPRESENTATIVE  
MIKE@COUPALMARKOU.COM  
519-742-7000 X 105

**COUPAL MARKOU COMMERCIAL REAL ESTATE INC.**  
150 KING STREET SOUTH  
WATERLOO, ON N2J 1P6  
OFFICE → 519-742-7000  
FAX → 519-742-7070  
www.coupalmarkou.com



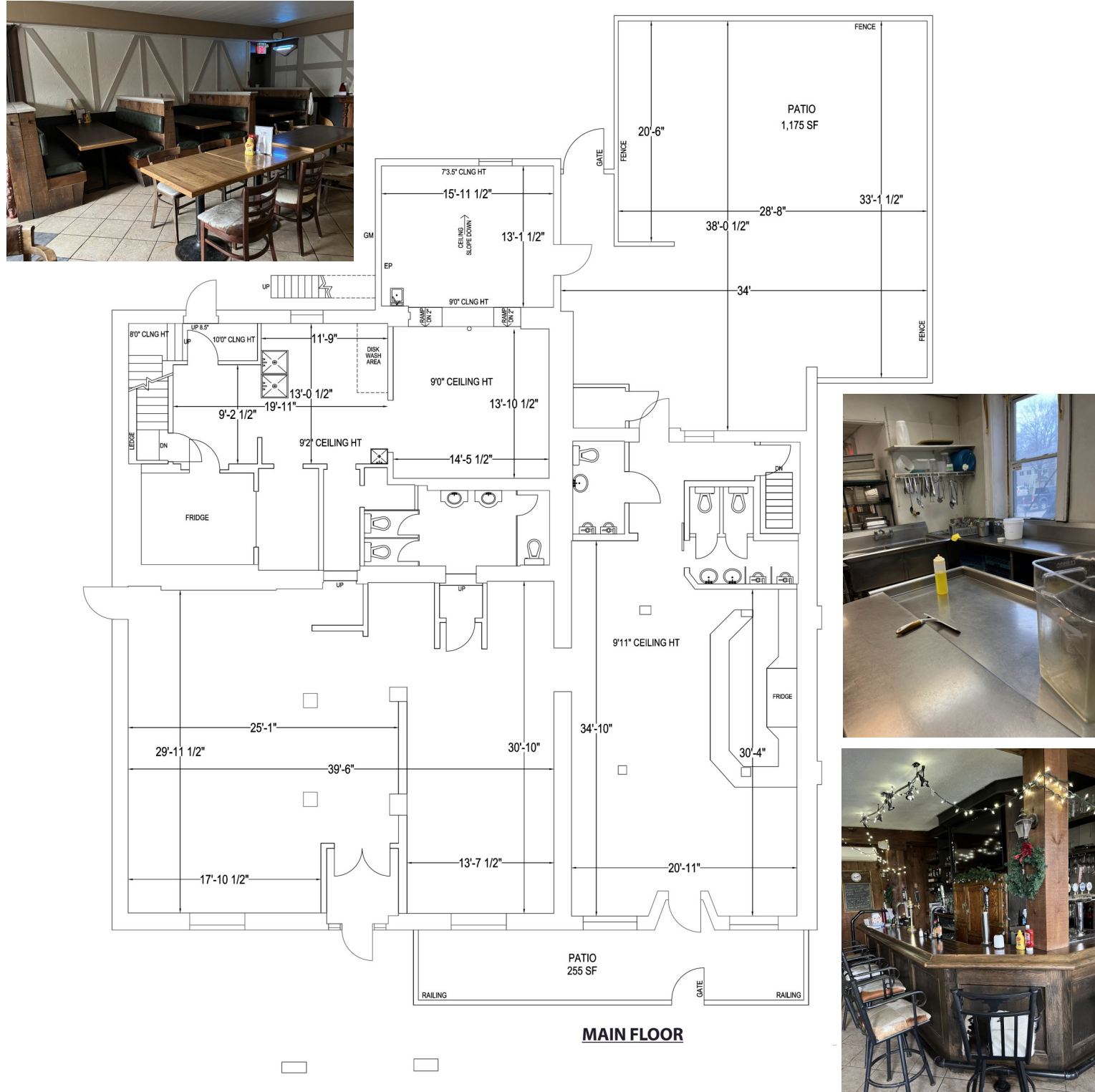
This disclaimer shall apply to Coupal Markou Commercial Real Estate Inc., Brokerage, to include all employees and independent contractors. The information set out herein is for advertising purposes, and any images, assumptions, estimates and property details have been obtained from sources deemed to be reliable. No warranty or representation is made as to its accuracy, correctness and completeness of the information, being subject to errors, omissions, conditions, prior sale / lease, withdrawal or other changes without notice. The recipient of the information should conduct its own inquiries and investigations prior to placing any reliance upon the information. MLS

# 1193

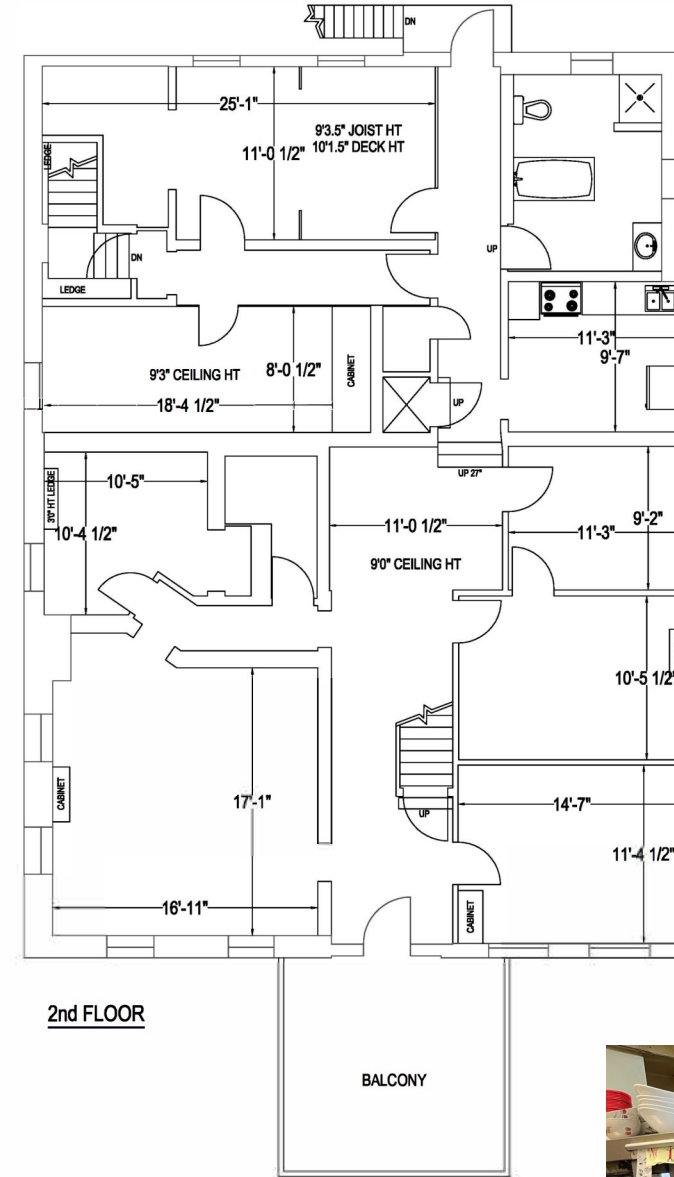
## QUEENS BUSH ROAD, WELLESLEY

**FOR SALE**  
**STAND ALONE COMMERCIAL BUILDING**

Main Floor - 3,777 Sq ft

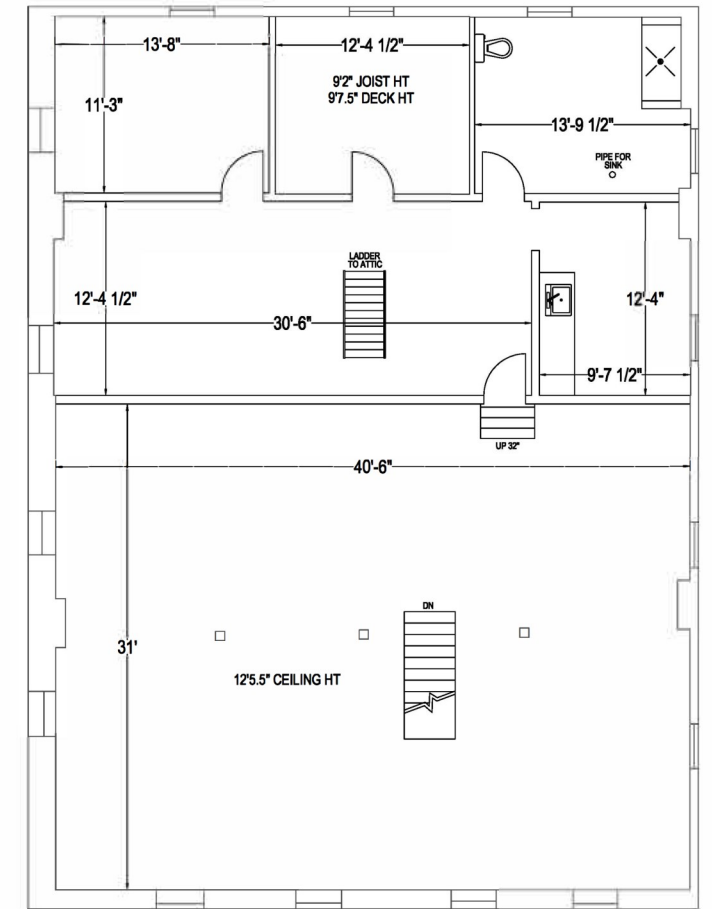


2nd Floor - 2,466Sq ft



2nd FLOOR

3rd Floor - 2,462Sq ft



3rd FLOOR

