

# 280

FOR LEASE

WALK UP RETAIL/OFFICE SPACE IN KITCHENER

VICTORIA STREET NORTH, UNIT 4, KITCHENER



## AVAILABILITY

1,210 SQ FT

## LEASE RATE

\$18.95/SQ FT NET

## ADDITIONAL RENT

\$10.00/SQ FT  
PLUS UTILITES

## ZONING

MIX-2

## POSSESSION

IMMEDIATE

## FEATURES

- \* Located on the corner of Victoria St N and St. Leger St, Near Margaret Ave and Lancaster St
- \* 1,210 sq. ft. of walk up Retail or Office use in high traffic location
- \* Ample on site parking
- \* Signage opportunity
- \* Many permitted uses within the zoning.
- \* Utilities are in addition to CAMs
- \* Close proximity to Hwy #7, Conestoga Expressway and Downtown Kitchener

MICHAEL CONRAD  
SALES REPRESENTATIVE  
[MIKE@COUPALMARKOU.COM](mailto:MIKE@COUPALMARKOU.COM)  
519-742-7000 x 105

MATT DICKSON  
SALES REPRESENTATIVE  
[MATT@COUPALMARKOU.COM](mailto:MATT@COUPALMARKOU.COM)  
519-742-7000 x 104

COUPAL MARKOU COMMERCIAL  
REAL ESTATE INC.  
150 KING STREET SOUTH  
WATERLOO, ONTARIO N2J 1P6  
OFFICE: 519-742-7000  
FAX: 519-742-7070



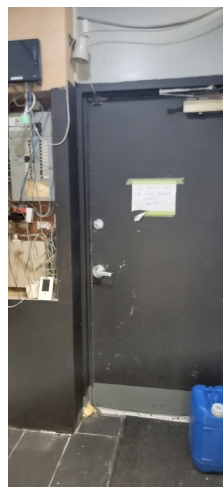
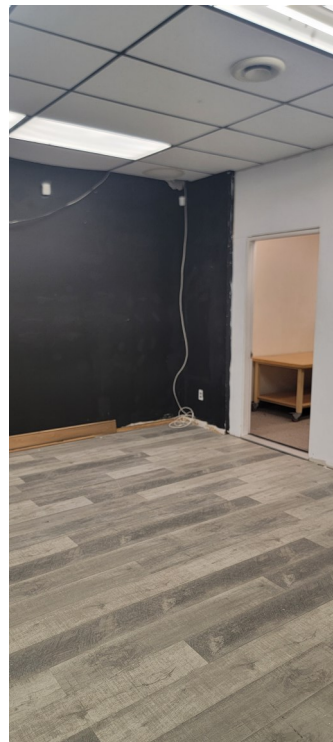
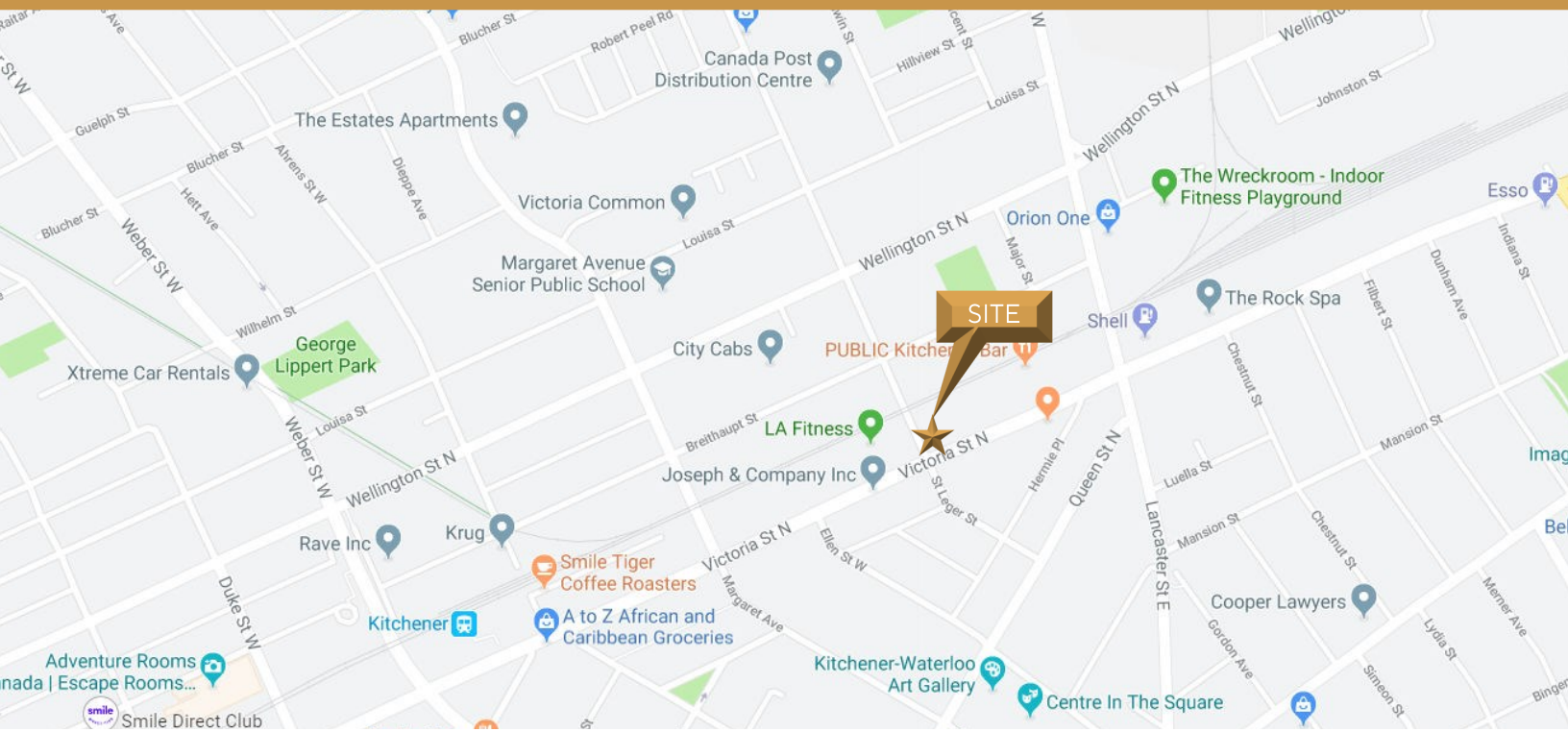
[www.coupalmarkou.com](http://www.coupalmarkou.com)

# 280

## WALK UP RETAIL/OFFICE SPACE IN KITCHENER

### FOR LEASE

### VICTORIA STREET NORTH, UNIT 4, KITCHENER



MICHAEL CONRAD  
SALES REPRESENTATIVE  
[MIKE@COUPALMARKOU.COM](mailto:MIKE@COUPALMARKOU.COM)  
519-742-7000 x 105

MATT DICKSON  
SALES REPRESENTATIVE  
[MATT@COUPALMARKOU.COM](mailto:MATT@COUPALMARKOU.COM)  
519-742-7000 x 104

COUPAL MARKOU COMMERCIAL  
REAL ESTATE INC.  
150 KING STREET SOUTH  
WATERLOO, ONTARIO N2J 1P6  
OFFICE: 519-742-7000  
FAX: 519-742-7070



This disclaimer shall apply to Coupal Markou Commercial Real Estate Inc., Brokerage, to include all employees and independent contractors. The information set out herein is for advertising purposes, and any images, assumptions, estimates and property details have been obtained from sources deemed to be reliable. No warranty or representation is made as to its accuracy, correctness and completeness of the information, being subject to errors, omissions, conditions, prior sale / lease, withdrawal or other changes without notice. The recipient of the information should conduct their own inquiries and investigations prior to placing any reliance upon the information. MLS

[www.coupalmarkou.com](http://www.coupalmarkou.com)