

851

FOR LEASE SECOND FLOOR OFFICE SPACE

FISCHER HALLMAN ROAD, KITCHENER



AVAILABILITY

201 - 1,632 sq ft

2nd floor Office space

LEASE RATE

\$22.00/sq ft net

ADDITIONAL RENT

\$13.00/sq ft

plus utilities

ZONING

COM-2

POSSESSION

Immediate

- * Located at the corner of Fischer Hallman Road and University Avenue West
- * Second floor office space with large windows for natural light
- * Exceptional location in commercial/retail plaza, near amenities and surrounded by residential
- * Recent façade changes completed
- * High vehicle and foot traffic and abundant on-site parking
- * Great visibility with signage opportunities
- * Fully air conditioned

MICHAEL CONRAD
SALES REPRESENTATIVE
MIKE@COUPALMARKOU.COM
519-742-7000 x 105

MATT DICKSON
SALES REPRESENTATIVE
MATT@COUPALMARKOU.COM
519-742-7000 x 104

**COUPAL MARKOU COMMERCIAL
REAL ESTATE INC**
150 KING STREET SOUTH
WATERLOO, ONTARIO N2J 1P6
OFFICE 519-742-7000
FAX 519-742-7070

Coupal Markou
Commercial Real Estate Inc., Brokerage
www.coupalmarkou.com

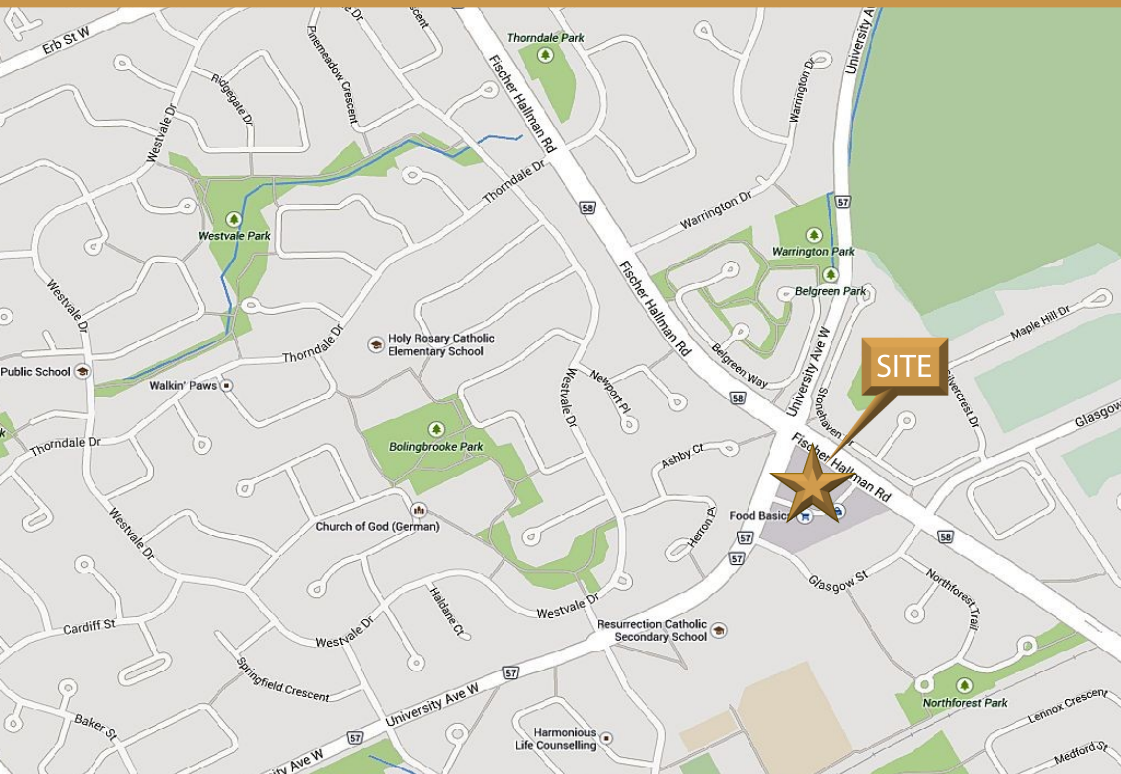
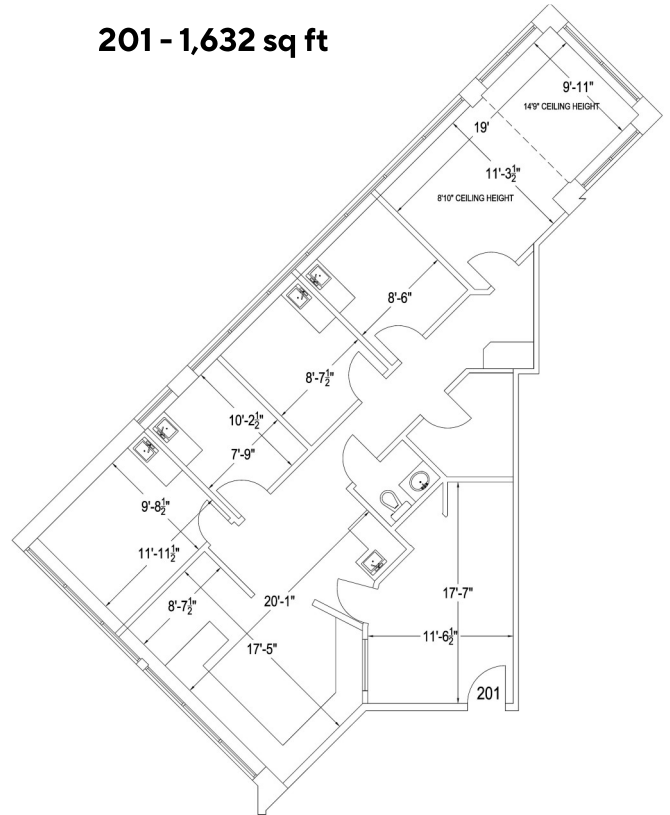
851

FOR LEASE SECOND FLOOR OFFICE SPACE

FISCHER HALLMAN ROAD, KITCHENER



201 - 1,632 sq ft



MICHAEL CONRAD
SALES REPRESENTATIVE
MIKE@COUPALMARKOU.COM
519-742-7000 x 105

MATT DICKSON
SALES REPRESENTATIVE
MATT@COUPALMARKOU.COM
519-742-7000 x 104

**COUPAL MARKOU COMMERCIAL
REAL ESTATE INC**
150 KING STREET SOUTH
WATERLOO, ONTARIO N2J 1P6
OFFICE 519-742-7000
FAX 519-742-7070



This disclaimer shall apply to Coupal Markou Commercial Real Estate Inc., Brokerage, to include all employees and independent contractors. The information set out herein is for advertising purposes, and any images, assumptions, estimates and property details have been obtained from sources deemed to be reliable. No warranty or representation is made as to its accuracy, correctness and completeness of the information, being subject to errors, omissions, conditions, prior sale / lease, withdrawal or other changes without notice. The recipient of the information should conduct its own inquiries and investigations prior to placing any reliance upon the information. MLS