

FOR LEASE

STREET FRONT RETAIL SPACE

16 WATER STREET SOUTH, CAMBRIDGE



AVAILABILITY

1,295 SQ FT

LEASE RATE

\$2,950/ MONTH GROSS
+ HST

ADDITIONAL FEES

UTILITIES

ZONING

C1RM1

POSSESSION

Immediate

- Located on Water St S, Near Main St in Cambridge
- 1,295 sq ft of Ground floor retail space in downtown Galt
- Includes basement use, not included in square footage
- 100amp hydro service
- High traffic area with great street exposure
- good signage
- On many public transit routes
- C1RM1 zoning is ideal for many uses
- Immediate occupancy

Peter Kruschen
Sales Representative
519-742-7000 x106
peter@coupalmarkou.com

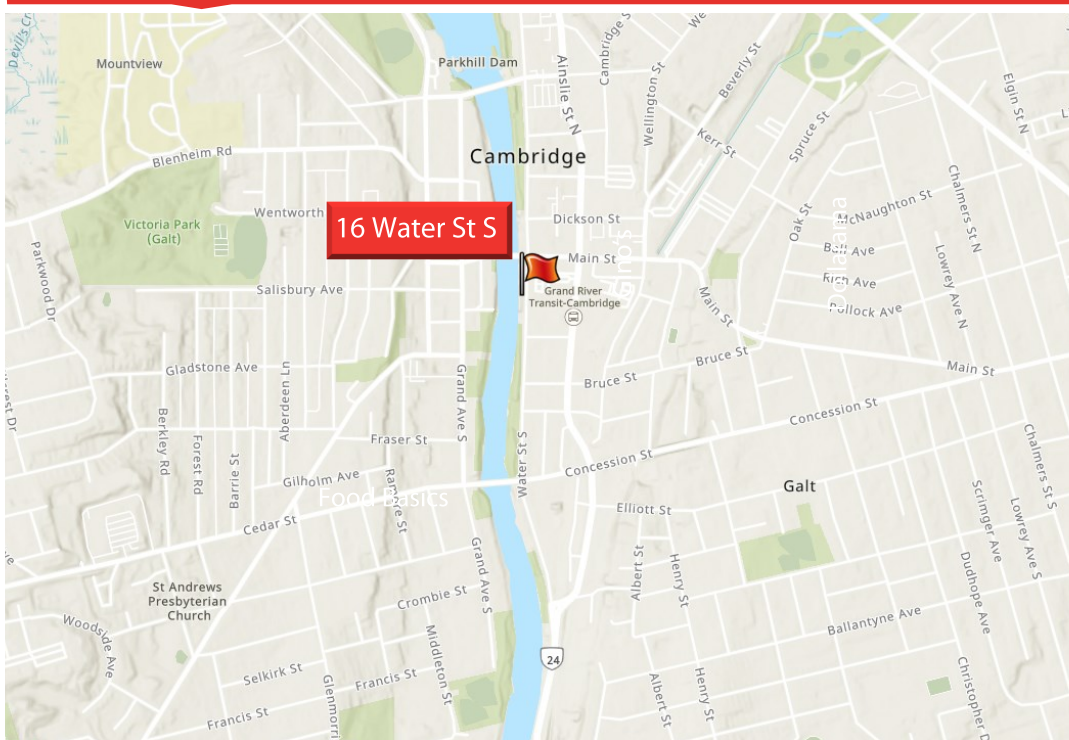
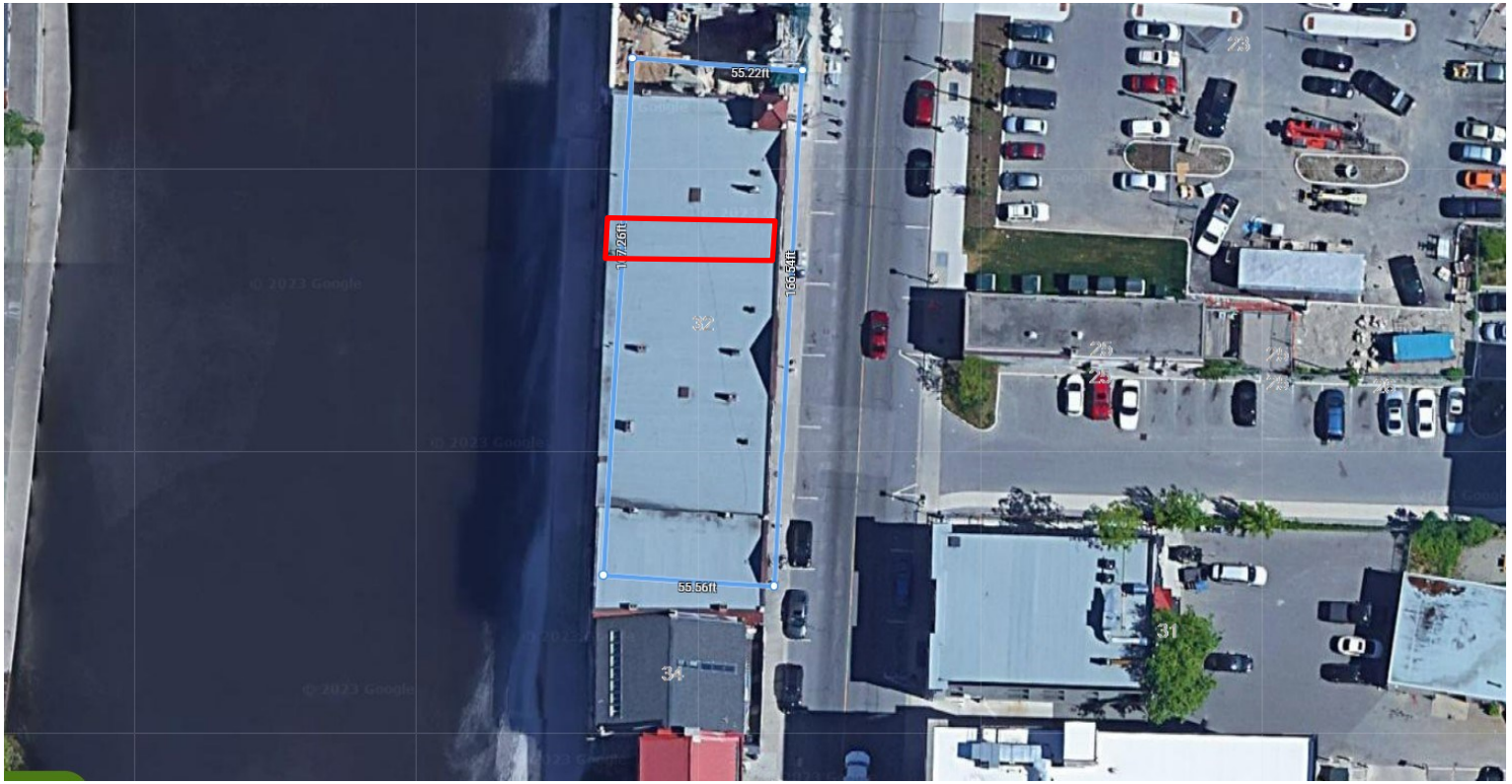
**COUPAL MARKOU COMMERCIAL
REAL ESTATE INC.**
150 KING STREET SOUTH
WATERLOO, ONTARIO N2J 1P6
OFFICE 519-742-7000
FAX 519-742-7070

Coupal Markou
Commercial Real Estate Inc., Brokerage
www.coupalmarkou.com

FOR LEASE

STREET FRONT RETAIL SPACE

16 WATER STREET SOUTH, CAMBRIDGE



Peter Kruschen
Sales Representative
519-742-7000 x106
peter@coupalmarkou.com

**COUPAL MARKOU COMMERCIAL
REAL ESTATE INC.**
150 KING STREET SOUTH
WATERLOO, ONTARIO N2J 1P6
OFFICE 519-742-7000
FAX 519-742-7070

This disclaimer shall apply to Coupal Markou Commercial Real Estate Inc., Brokerage, to include all employees and independent contractors. The information set out herein is for advertising purposes, and any images, assumptions, estimates and property details have been obtained from sources deemed to be reliable. No warranty or representation is made as to its accuracy, correctness and completeness of the information, being subject to errors, omissions, conditions, prior sale / lease, withdrawal or other changes without notice. The recipient of the information should conduct its own inquiries and investigations prior to placing any reliance upon the information. MLS

Coupal Markou
Commercial Real Estate Inc., Brokerage

www.coupalmarkou.com