

1145

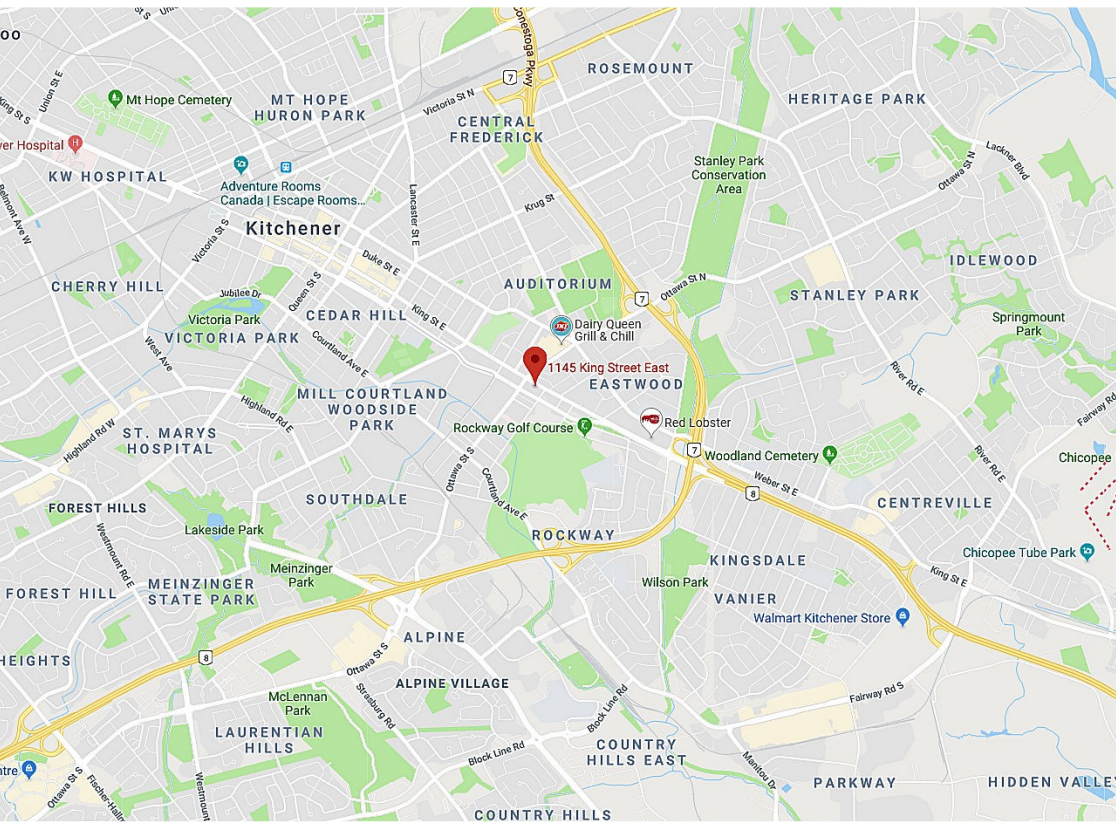
FOR LEASE DOWNTOWN OFFICE BUILDING

KING STREET EAST, KITCHENER

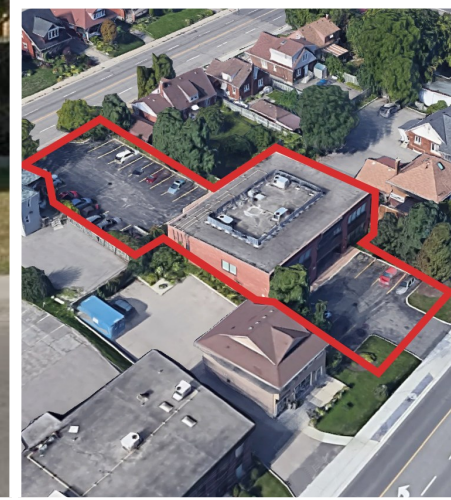
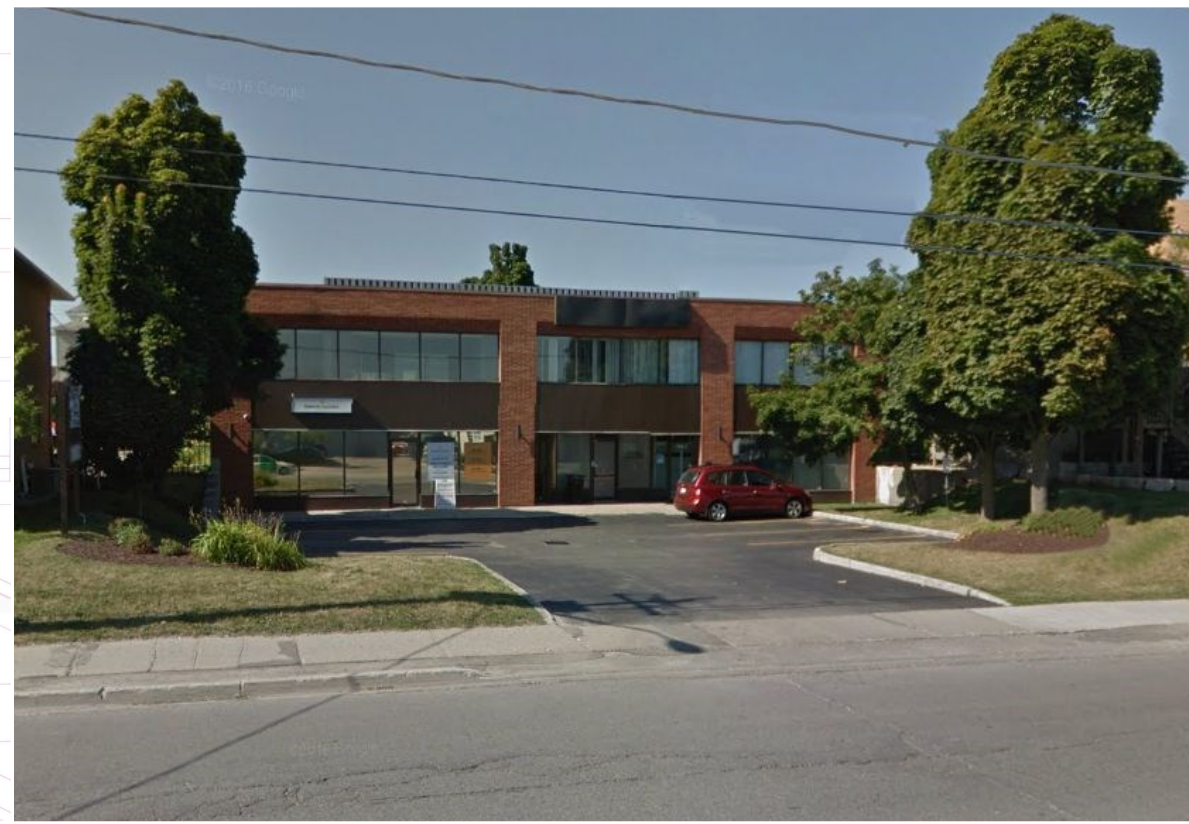
1145

FOR LEASE DOWNTOWN OFFICE BUILDING

KING STREET EAST, KITCHENER



LRT - ION route map



MICHAEL CONRAD
SALES REPRESENTATIVE
MIKE@COUPALMARKOU.COM
519-742-7000 x105

MATT DICKSON
SALES REPRESENTATIVE
MATT@COUPALMARKOU.COM
519-742-7000 x104

COUPAL MARKOU COMMERCIAL REAL ESTATE INC
150 KING STREET SOUTH
WATERLOO, ONTARIO N2J 1P6
OFFICE 519-742-7000
FAX 519-742-7070



AVAILABILITY
UNIT 202 - **LEASED**
UNIT 203 - 952 sq ft

LEASE RATE
202 - **LEASED**
203 - \$12.95/sq ft net

ADDITIONAL RENT
\$14.67/sq ft

ZONING
MU-3

POSSESSION
Negotiable

- * Situated on King Street East, near Ottawa Street and backing onto Charles Street East
- * Located steps from LRT stop in desirable Downtown Kitchener
- * Fantastic light, private offices and open areas
- * Professionally managed building
- * Signage and on-site parking available
- * Hydro, gas and janitorial included in additional rent

MICHAEL CONRAD
SALES REPRESENTATIVE
MIKE@COUPALMARKOU.COM
519-742-7000 x105

MATT DICKSON
SALES REPRESENTATIVE
MATT@COUPALMARKOU.COM
519-742-7000 x104

COUPAL MARKOU COMMERCIAL REAL ESTATE INC
150 KING STREET SOUTH
WATERLOO, ONTARIO N2J 1P6
OFFICE 519-742-7000
FAX 519-742-7070



This disclaimer shall apply to Coupal Markou Commercial Real Estate Inc., Brokerage, to include all employees and independent contractors. The information set out herein is for advertising purposes, and any images, assumptions, estimates and property details have been obtained from sources deemed to be reliable. No warranty or representation is made as to its accuracy, correctness and completeness of the information, being subject to errors, omissions, conditions, prior sale / lease, withdrawal or other changes without notice. The recipient of the information should conduct its own inquiries and investigations prior to placing any reliance upon the information. MLS

1145

KING STREET EAST, KITCHENER

FOR LEASE
DOWNTOWN OFFICE BUILDING

UNIT 202 - 695 SQ FT

UNIT 203 - 952 SQ FT

