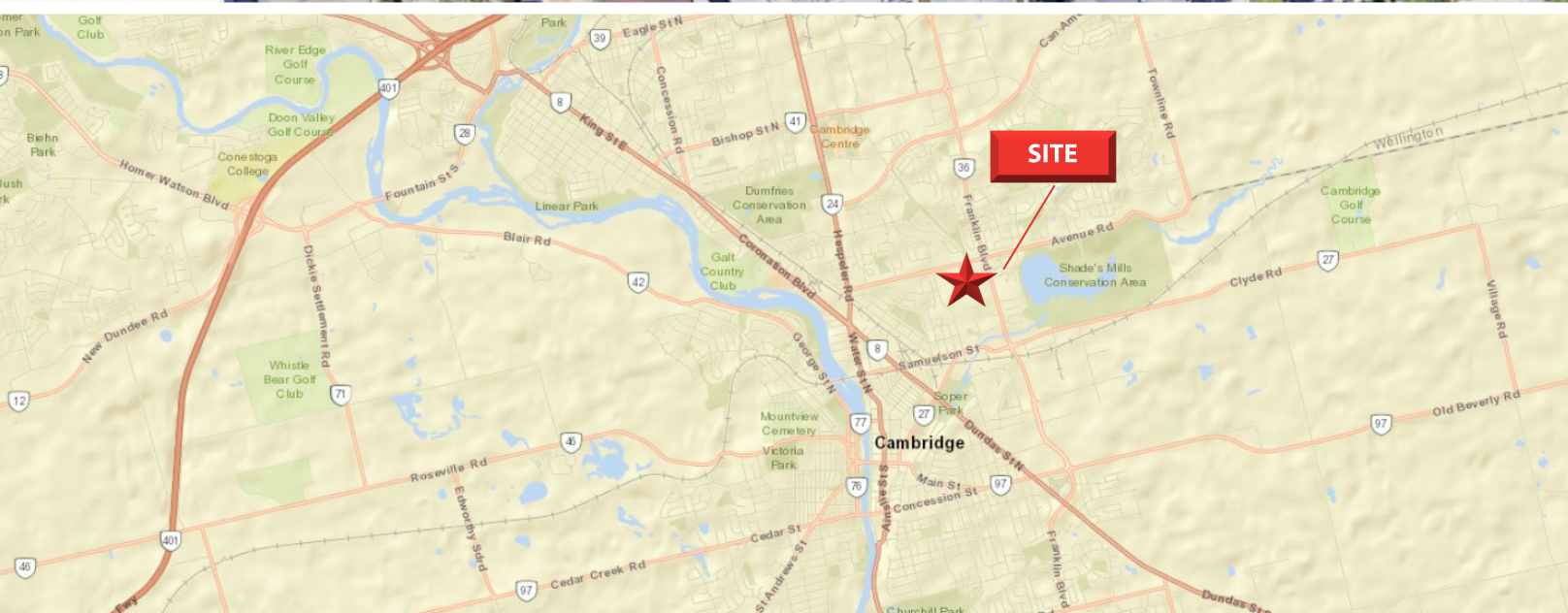


800

FOR LEASE WALK-UP RETAIL SPACE

FRANKLIN BOULEVARD, CAMBRIDGE



800

FOR LEASE WALK-UP RETAIL SPACE

FRANKLIN BOULEVARD, CAMBRIDGE



AVAILABILITY

A3 - **LEASED**
C 9/10 - 1,934 SQ FT

LEASE RATE

A3 - **LEASED**
C 9/10 - \$20.00/SQ FT
NET

ADDITIONAL RENT

\$13.99/SQ FT
PLUS UTILITIES

ZONING

CS5 C5

COUPAL MARKOU COMMERCIAL REAL ESTATE INC.

MATT DICKSON
SALES REPRESENTATIVE
MATT@COUPALMARKOU.COM
519-742-7000 X 104

MIKE CONRAD
SALES REPRESENTATIVE
MIKE@COUPALMARKOU.COM
519-742-7000 X 105

150 KING STREET SOUTH
WATERLOO, ONT. N2J 1P6
OFFICE 519-742-7000
FAX 519-742-7070



www.coupalmarkou.com

COUPAL MARKOU COMMERCIAL REAL ESTATE INC.

MATT DICKSON
SALES REPRESENTATIVE
MATT@COUPALMARKOU.COM
519-742-7000 X 104

MIKE CONRAD
SALES REPRESENTATIVE
MIKE@COUPALMARKOU.COM
519-742-7000 X 105

150 KING STREET SOUTH
WATERLOO, ONT. N2J 1P6
OFFICE 519-742-7000
FAX 519-742-7070



www.coupalmarkou.com

FOR LEASE

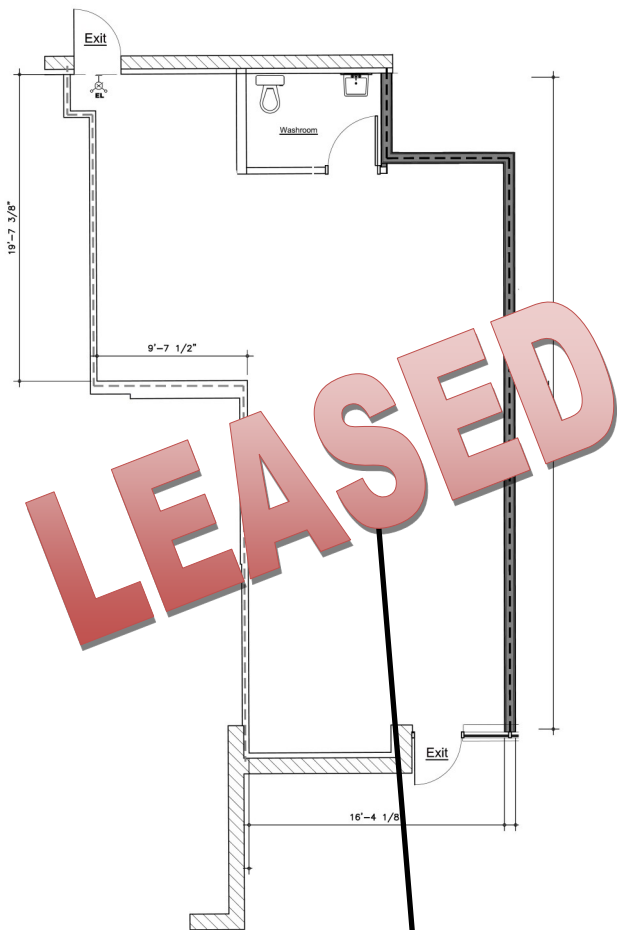
800 FRANKLIN BLVD, CAMBRIDGE

HIGHLIGHTS

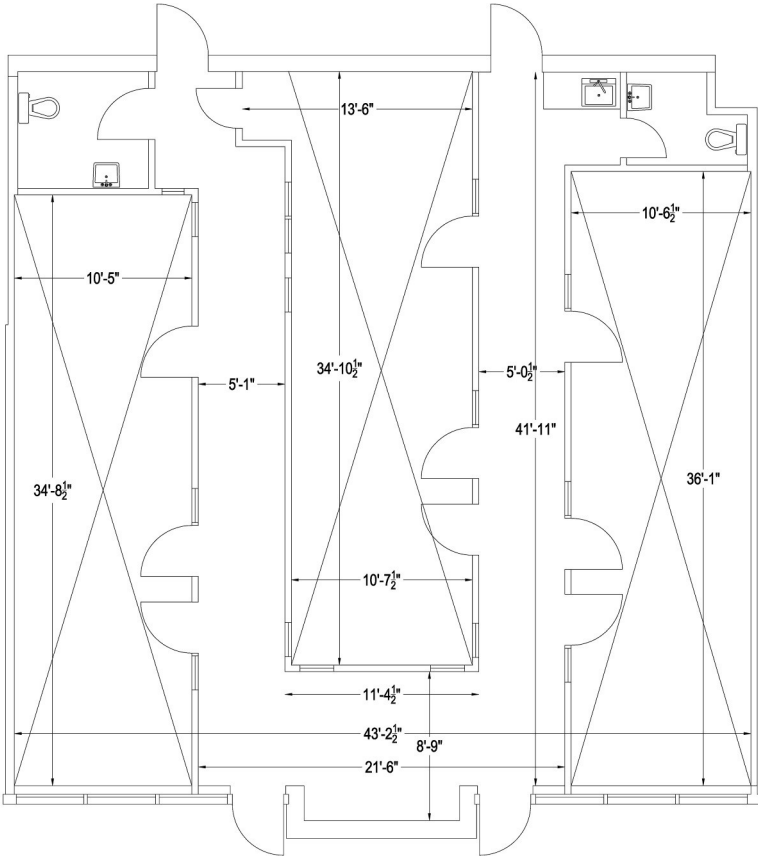
- * Located at the busy round-about of Franklin Boulevard and Avenue road in Cambridge
- * Retail/Office space available at Clemens Mill Crossing
- * 1,934 sq ft in building C
- * Zoning allows for many uses
- * Ample on-site parking and easy access from either Avenue or Franklin Boulevard
- * Near many amenities and within minutes to Hwy #401



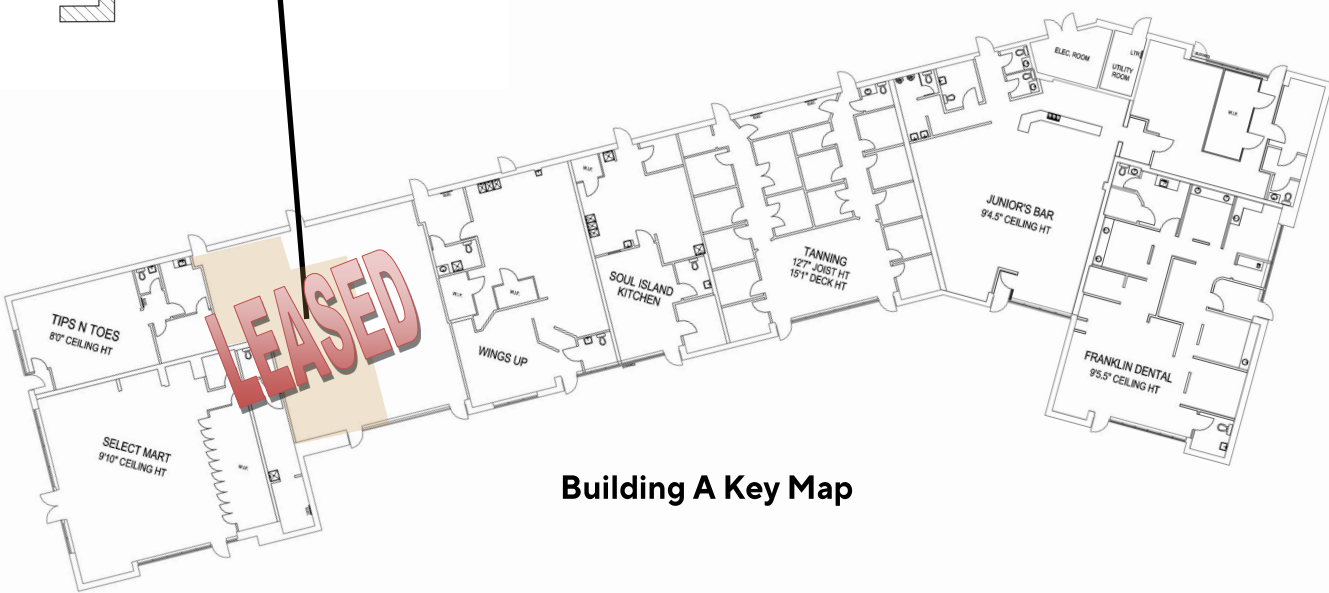
Floor Plans: Unit A3 - 922 sq ft



Floor Plans: Unit C9/10 - 1,934 sq ft



Entrance



Building A Key Map

This disclaimer shall apply to Coupal Markou Commercial Real Estate Inc., Brokerage, to include all employees and independent contractors. The information set out herein is for advertising purposes, and any images, assumptions, estimates and property details have been obtained from sources deemed to be reliable. No warranty or representation is made as to its accuracy, correctness and completeness of the information, being subject to errors, omissions, conditions, prior sale / lease, withdrawal or other changes without notice. The recipient of the information should conduct its own inquiries and investigations prior to placing any reliance upon the information. MLS