

# 155

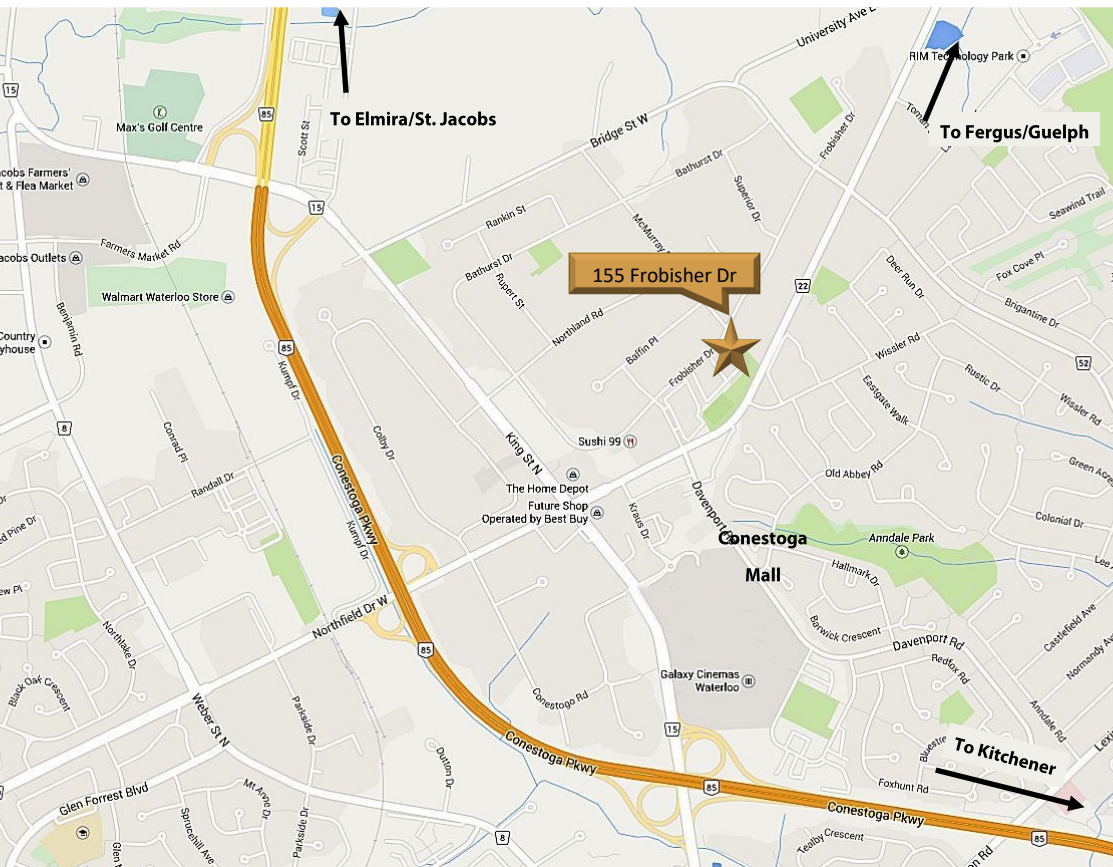
FOR LEASE  
UNIQUE OFFICE BUILDING

FROBISHER DRIVE, UNIT G113, WATERLOO

# 155

FOR LEASE  
UNIQUE OFFICE BUILDING

FROBISHER DRIVE, UNIT G113, WATERLOO



### Area Amenities Include:



MICHAEL CONRAD  
SALES REPRESENTATIVE  
[MIKE@COUPALMARKOU.COM](mailto:MIKE@COUPALMARKOU.COM)  
519-742-7000 x 105

MATT DICKSON  
SALES REPRESENTATIVE  
[MATT@COUPALMARKOU.COM](mailto:MATT@COUPALMARKOU.COM)  
519-742-7000 x 104

**COUPAL MARKOU COMMERCIAL  
REAL ESTATE INC**  
150 KING STREET SOUTH  
WATERLOO, ONTARIO N2J 1P6  
OFFICE 519-742-7000  
FAX 519-742-7070



### AVAILABILITY

G113 - 1,985 sq ft

### GROSS LEASE RATE

\$3,200.00/Month  
\*plus hydro

### ZONING

E1-27

### POSSESSION

IMMEDIATE

- \* Great location on Frobisher Drive between Davenport Road and Bridge Street
- \* Main floor professional office space in uniquely designed building
- \* Fully air conditioned, in suite washroom and lots of windows for natural light
- \* Close to Conestoga Expressway with easy access to surrounding towns: Elmira, Fergus and Guelph
- \* Many nearby amenities including Conestoga Mall
- \* Located directly on bus route and near LRT route
- \* Signage available
- \* Free on-site parking

MICHAEL CONRAD  
SALES REPRESENTATIVE  
[MIKE@COUPALMARKOU.COM](mailto:MIKE@COUPALMARKOU.COM)  
519-742-7000 x 105

MATT DICKSON  
SALES REPRESENTATIVE  
[MATT@COUPALMARKOU.COM](mailto:MATT@COUPALMARKOU.COM)  
519-742-7000 x 104

**COUPAL MARKOU COMMERCIAL  
REAL ESTATE INC**  
150 KING STREET SOUTH  
WATERLOO, ONTARIO N2J 1P6  
OFFICE 519-742-7000  
FAX 519-742-7070



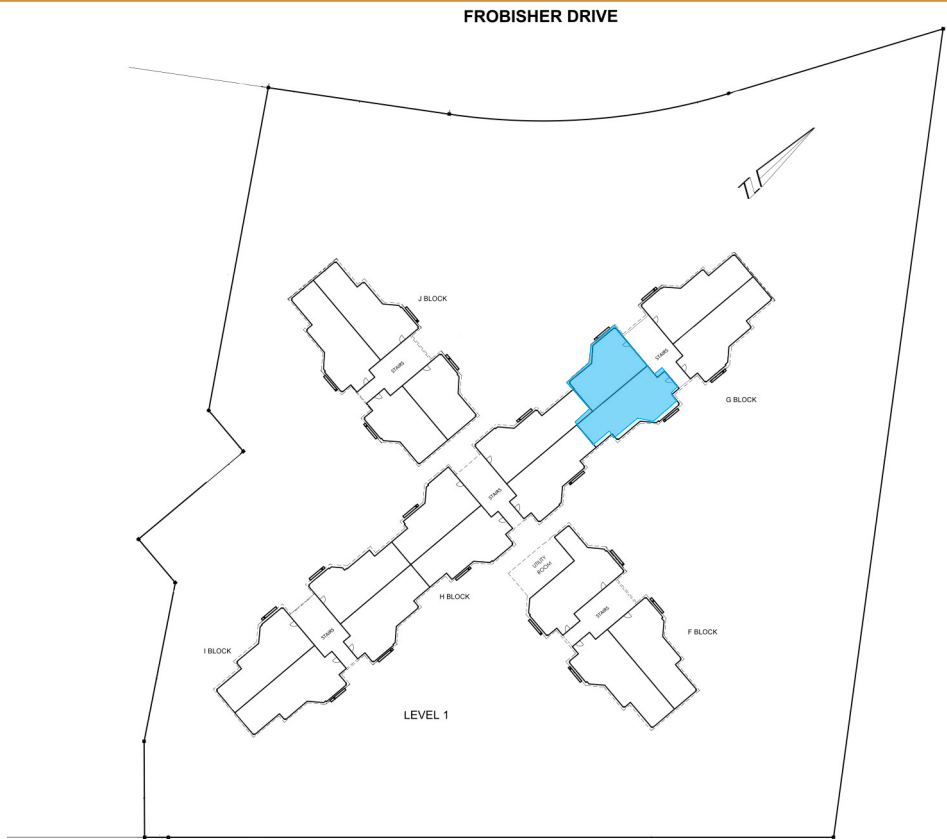
This disclaimer shall apply to Coupal Markou Commercial Real Estate Inc., Brokerage, to include all employees and independent contractors. The information set out herein is for advertising purposes, and any images, assumptions, estimates and property details have been obtained from sources deemed to be reliable. No warranty or representation is made as to its accuracy, correctness and completeness of the information, being subject to errors, omissions, conditions, prior sale / lease, withdrawal or other changes without notice. The recipient of the information should conduct its own inquiries and investigations prior to placing any reliance upon the information. MLS



# 155

FROBISHER DRIVE, UNIT G113, WATERLOO

FOR LEASE  
UNIQUE OFFICE BUILDING



G113 - 1,985 sq ft

