

# 780

## KING STREET EAST, CAMBRIDGE

### FOR LEASE

### GROUND LEVEL OFFICE SPACE IN PRESTON



#### AVAILABILITY

2,400 SQ FT

#### LEASE RATE

\$14.95/SQ FT NET

#### ADDITIONAL RENT

\$5.85/SQ FT

#### ZONING

C-1 RM-2

#### POSSESSION

IMMEDIATE

#### FEATURES

- \* Located on the corner of King St E, and Church St in Preston, Cambridge
- \* 2,400 sq. ft. ground level office with windows on three sides for natural lighting
- \* Consists of: 4 private offices, boardroom, reception area, 2 washrooms and a kitchenette
- \* An abundance of onsite parking
- \* Great frontage, signage and corner site for high visibility
- \* Utilities are in addition to CAMs
- \* Close proximity to Hwy 8 and Hwy 401 interchange

MICHAEL CONRAD  
SALES REPRESENTATIVE  
[MIKE@COUPALMARKOU.COM](mailto:MIKE@COUPALMARKOU.COM)  
519-742-7000 x 105

MATT DICKSON  
SALES REPRESENTATIVE  
[MATT@COUPALMARKOU.COM](mailto:MATT@COUPALMARKOU.COM)  
519-742-7000 x 104

COUPAL MARKOU COMMERCIAL  
REAL ESTATE INC.  
150 KING STREET SOUTH  
WATERLOO, ONTARIO N2J 1P6  
OFFICE: 519-742-7000  
FAX: 519-742-7070



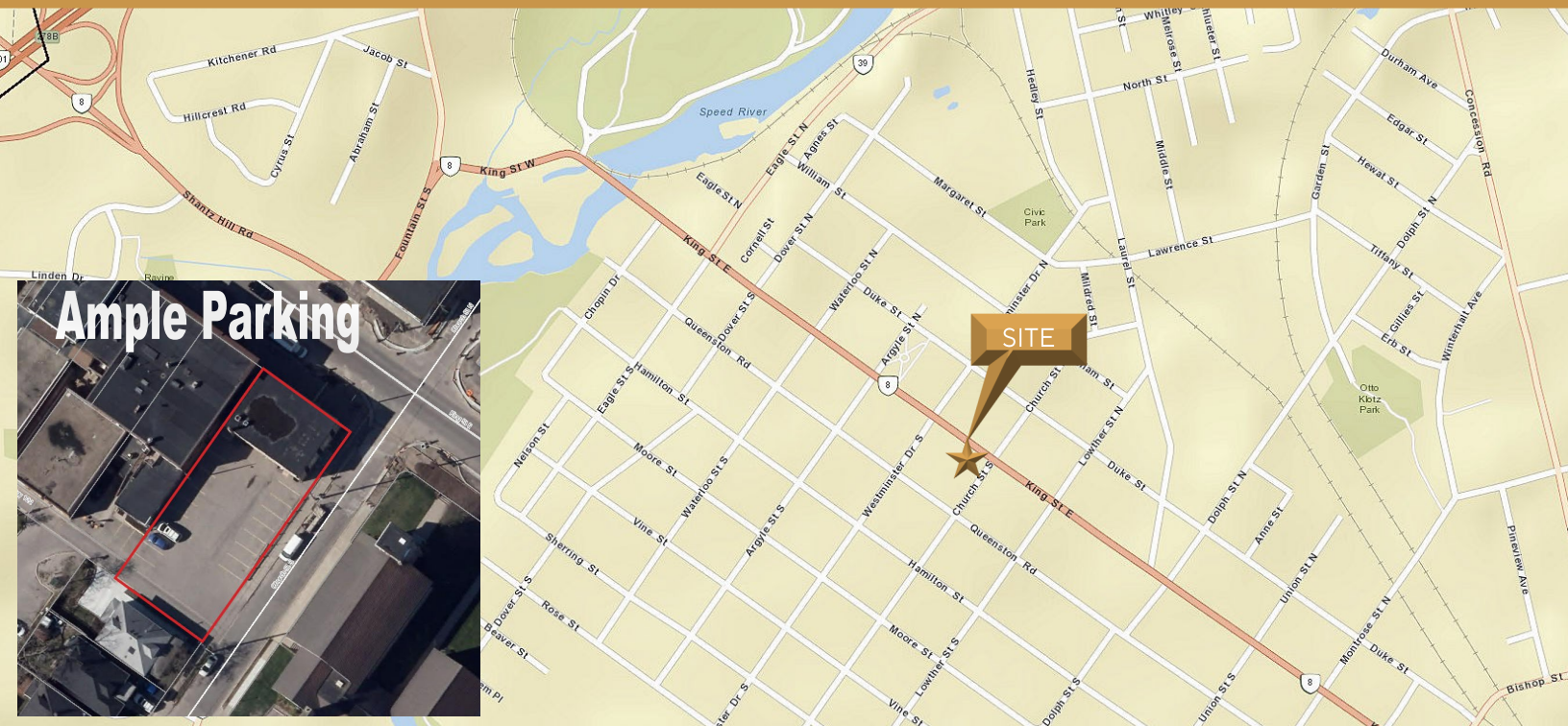


# 780

## KING STREET EAST, CAMBRIDGE

### FOR LEASE

### GROUND LEVEL OFFICE SPACE IN PRESTON



MICHAEL CONRAD  
SALES REPRESENTATIVE  
[MIKE@COUPALMARKOU.COM](mailto:MIKE@COUPALMARKOU.COM)  
519-742-7000 x 105

MATT DICKSON  
SALES REPRESENTATIVE  
[MATT@COUPALMARKOU.COM](mailto:MATT@COUPALMARKOU.COM)  
519-742-7000 x 104

COUPAL MARKOU COMMERCIAL  
REAL ESTATE INC.  
150 KING STREET SOUTH  
WATERLOO, ONTARIO N2J 1P6  
OFFICE: 519-742-7000  
FAX: 519-742-7070



This disclaimer shall apply to Coupal Markou Commercial Real Estate Inc., Brokerage, to include all employees and independent contractors. The information set out herein is for advertising purposes, and any images, assumptions, estimates and property details have been obtained from sources deemed to be reliable. No warranty or representation is made as to its accuracy, correctness and completeness of the information, being subject to errors, omissions, conditions, prior sale / lease, withdrawal or other changes without notice. The recipient of the information should conduct its own inquiries and investigations prior to placing any reliance upon the information. MLS

[www.coupalmarkou.com](http://www.coupalmarkou.com)