

800

FRANKLIN BOULEVARD, UNIT C8, CAMBRIDGE

FOR LEASE

SERVICE RETAIL/OFFICE SPACE



AVAILABILITY

UNIT C8 - 1,045 SQ FT

LEASE RATE

\$21.95/SQ FT NET

ADDITIONAL RENT

\$13.55/SQ FT
PLUS UTILITIES

ZONING

CS5C5

POSSESSION

JULY 1ST, 2024

FEATURES

- * Located on the corner of Avenue Road and Franklin Blvd in Cambridge
- * Retail/Office space available at Clemens Mill Crossing
- * Utilities are in addition to Additional Rent
- * CS5C5 zoning allows many uses
- * Ample on-site parking and easy access from either Avenue Road or Franklin Boulevard
- * Façia signage
- * Pylon signage, subject to availability and monthly charge

MATT DICKSON
SALES REPRESENTATIVE
MATT@COUPALMARKOU.COM
519-742-7000 x104

MICHAEL CONRAD
SALES REPRESENTATIVE
MIKE@COUPALMARKOU.COM
519-742-7000 x105

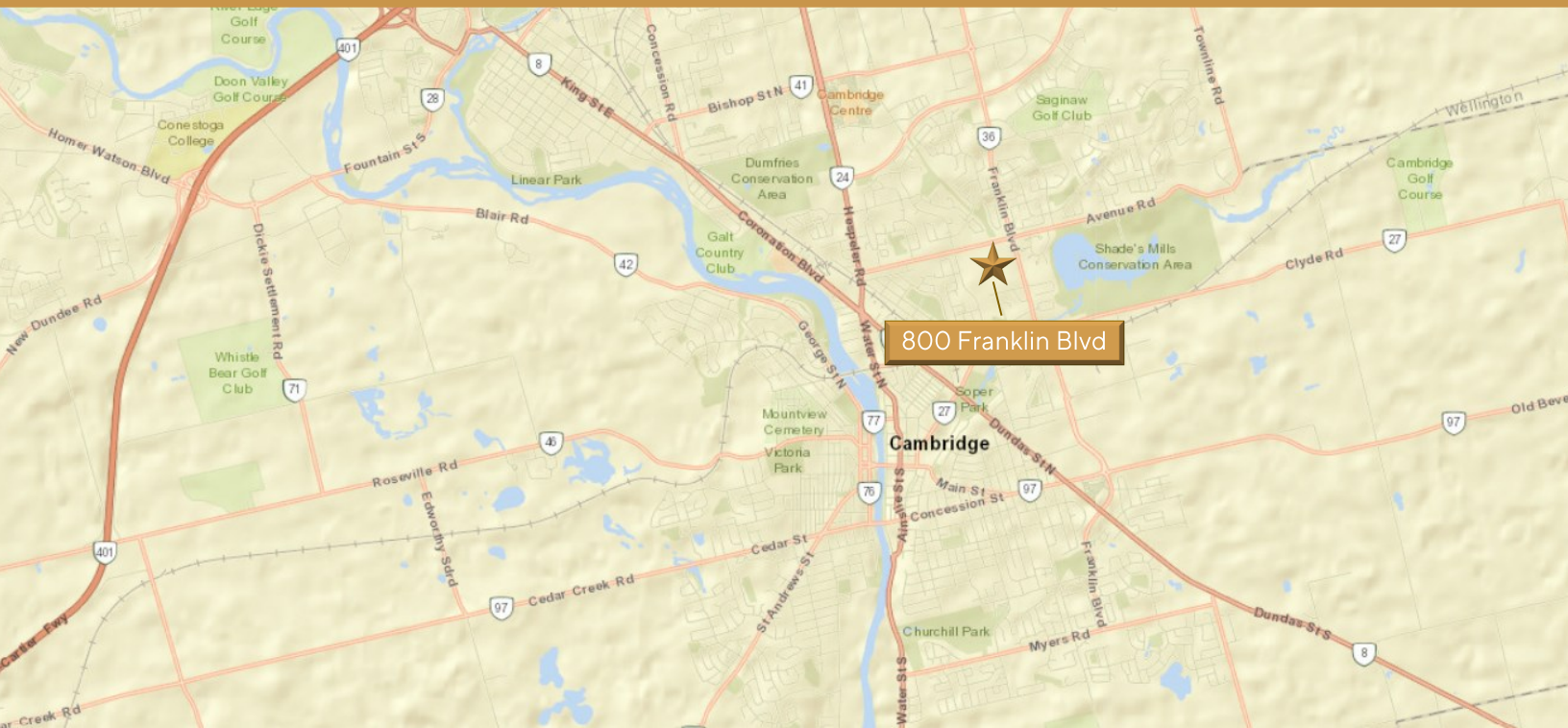
COUPAL MARKOU COMMERCIAL
REAL ESTATE INC.
150 KING STREET SOUTH
WATERLOO, ONTARIO N2J 1P6
OFFICE 519-742-7000
FAX 519-742-7070

Coupal Markou
Commercial Real Estate Inc., Brokerage
www.coupalmarkou.com

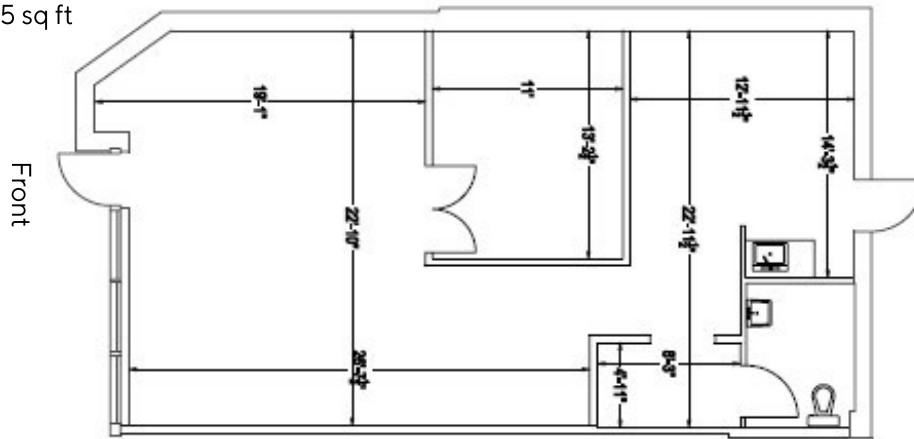
800

FOR LEASE
SERVICE RETAIL/OFFICE SPACE

FRANKLIN BOULEVARD, UNIT C8, CAMBRIDGE



Unit C8 - 1,045 sq ft



MATT DICKSON
SALES REPRESENTATIVE
MATT@COUPALMARKOU.COM
519-742-7000 x 104

MICHAEL CONRAD
SALES REPRESENTATIVE
MIKE@COUPALMARKOU.COM
519-742-7000 x 105

COUPAL MARKOU COMMERCIAL
REAL ESTATE INC.
150 KING STREET SOUTH
WATERLOO, ONTARIO N2J 1P6
OFFICE 519-742-7000
FAX 519-742-7070

This disclaimer shall apply to Coupal Markou Commercial Real Estate Inc., Brokerage, to include all employees and independent contractors. The information set out herein is for advertising purposes, and any images, assumptions, estimates and property details have been obtained from sources deemed to be reliable. No warranty or representation is made as to its accuracy, correctness and completeness of the information, being subject to errors, omissions, conditions, prior sale / lease, withdrawal or other changes without notice. The recipient of the information should conduct its own inquiries and investigations prior to placing any reliance upon the information. MLS

Coupal Markou
Commercial Real Estate Inc., Brokerage
www.coupalmarkou.com