

220

KING STREET NORTH, UNIT G1, WATERLOO

FOR LEASE WALK-UP RETAIL SPACE



AVAILABILITY

1,574 sq ft

LEASE RATE

\$40.00/sq ft Net

ADDITIONAL RENT

\$24.00/sq ft (2024)

Plus Utilities

ZONING

C1-81

POSSESSION

Immediate

- * Located on King Street North, near University Avenue
- * Retail space across from Wilfrid Laurier University and 2 blocks east of University of Waterloo
- * Ideal location with on-site parking and access from King St and Regina St
- * Close to many amenities
- * Excellent exposure to vehicular and pedestrian traffic
- * Recent exterior reface, stone and stucco
- * Join Tenants: Phil's, Mucho Burrito, Papa Johns, Osmow's, Session 7 and more

MICHAEL CONRAD
SALES REPRESENTATIVE
MIKE@COUPALMARKOU.COM
519-742-7000 x 105

MATT DICKSON
SALES REPRESENTATIVE
MATT@COUPALMARKOU.COM
519-742-7000 x 104

**COUPAL MARKOU COMMERCIAL
REAL ESTATE INC**
150 KING STREET SOUTH
WATERLOO, ONTARIO N2J 1P6
OFFICE 519-742-7000
FAX 519-742-7070



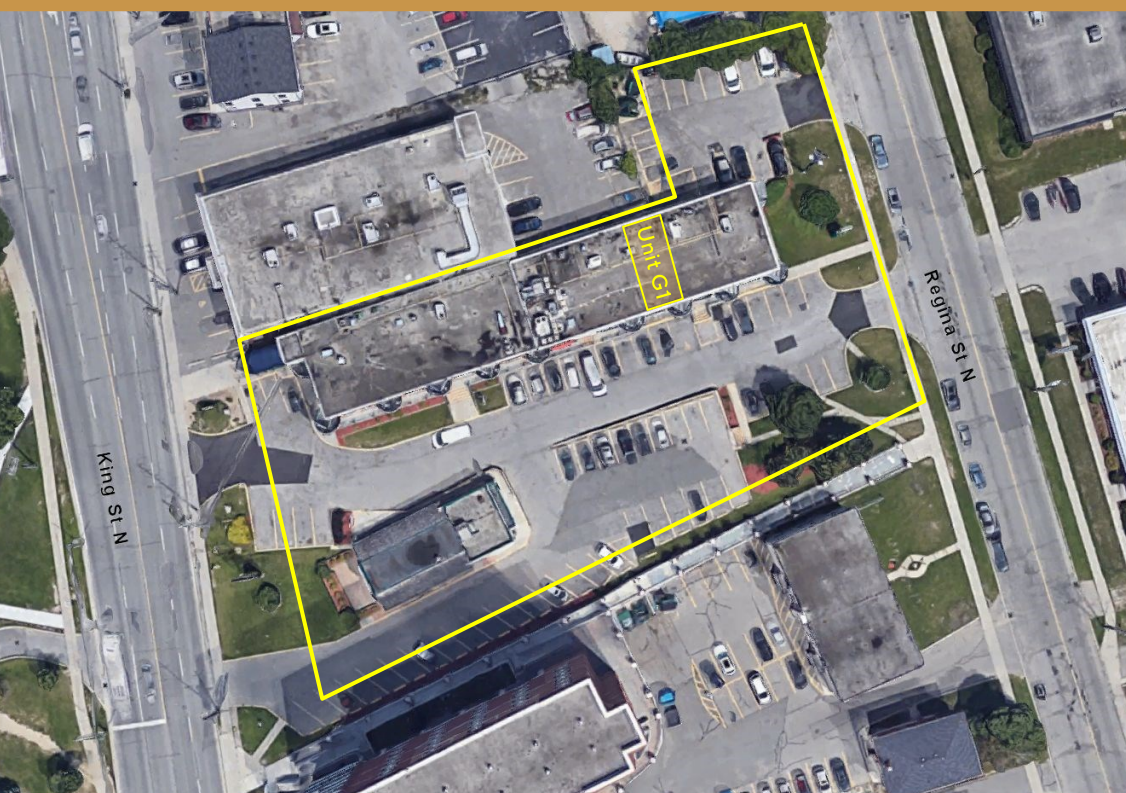
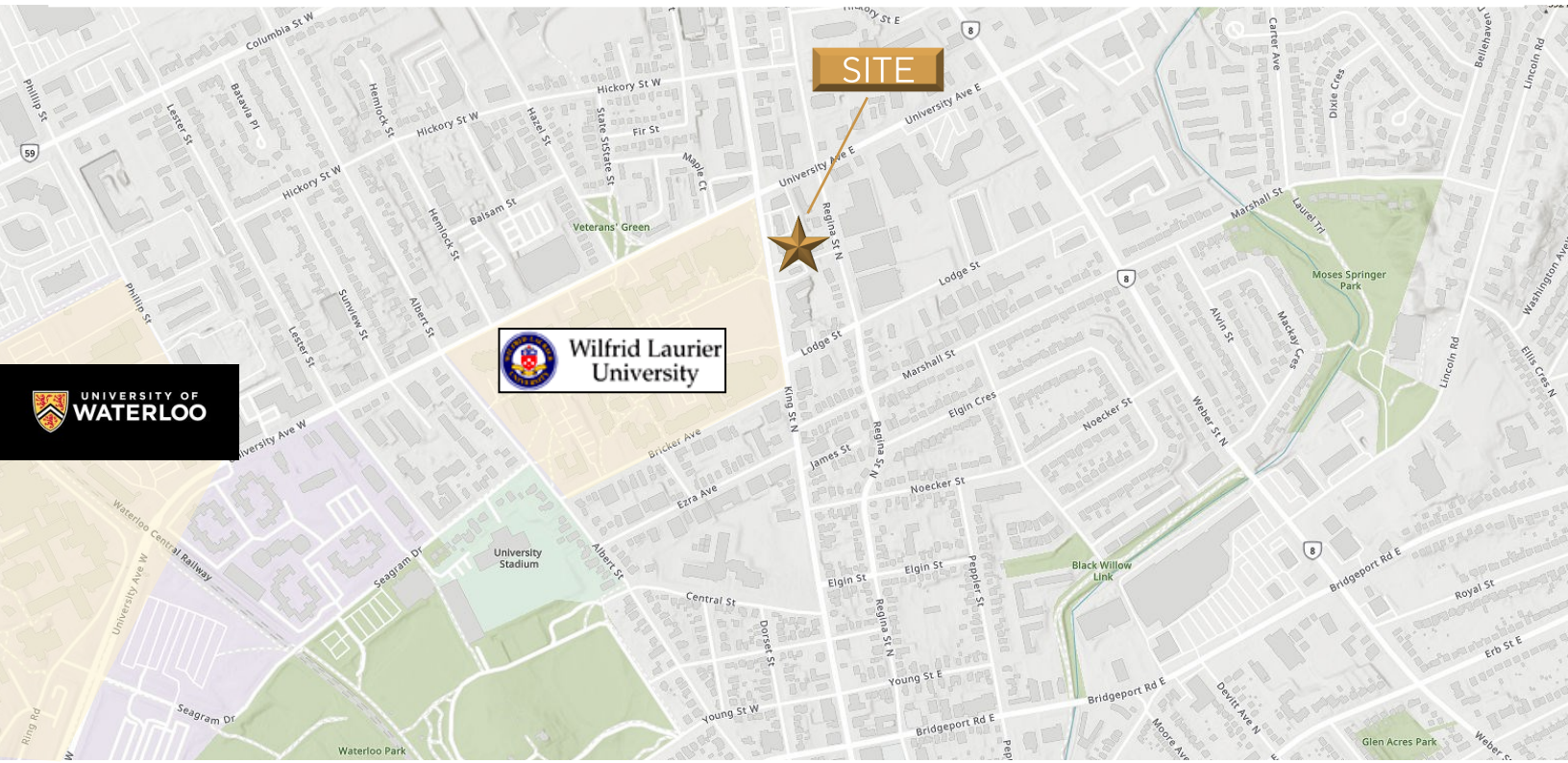
Commercial Real Estate Inc., Brokerage

www.coupalmarkou.com

220

KING STREET NORTH, UNIT G1, WATERLOO

FOR LEASE WALK-UP RETAIL SPACE



MICHAEL CONRAD
SALES REPRESENTATIVE
MIKE@COUPALMARKOU.COM
519-742-7000 x 105

MATT DICKSON
SALES REPRESENTATIVE
MATT@COUPALMARKOU.COM
519-742-7000 x 104

**COUPAL MARKOU COMMERCIAL
REAL ESTATE INC**
150 KING STREET SOUTH
WATERLOO, ONTARIO N2J 1P6
OFFICE 519-742-7000
FAX 519-742-7070



www.coupalmarkou.com

This disclaimer shall apply to Coupal Markou Commercial Real Estate Inc., Brokerage, to include all employees and independent contractors. The information set out herein is for advertising purposes, and any images, assumptions, estimates and property details have been obtained from sources deemed to be reliable. No warranty or representation is made as to its accuracy, correctness and completeness of the information, being subject to errors, omissions, conditions, prior sale / lease, withdrawal or other changes without notice. The recipient of the information should conduct its own inquiries and investigations prior to placing any reliance upon the information. MLS