

808

COURTLAND AVENUE EAST, UNIT 9, KITCHENER

FOR LEASE

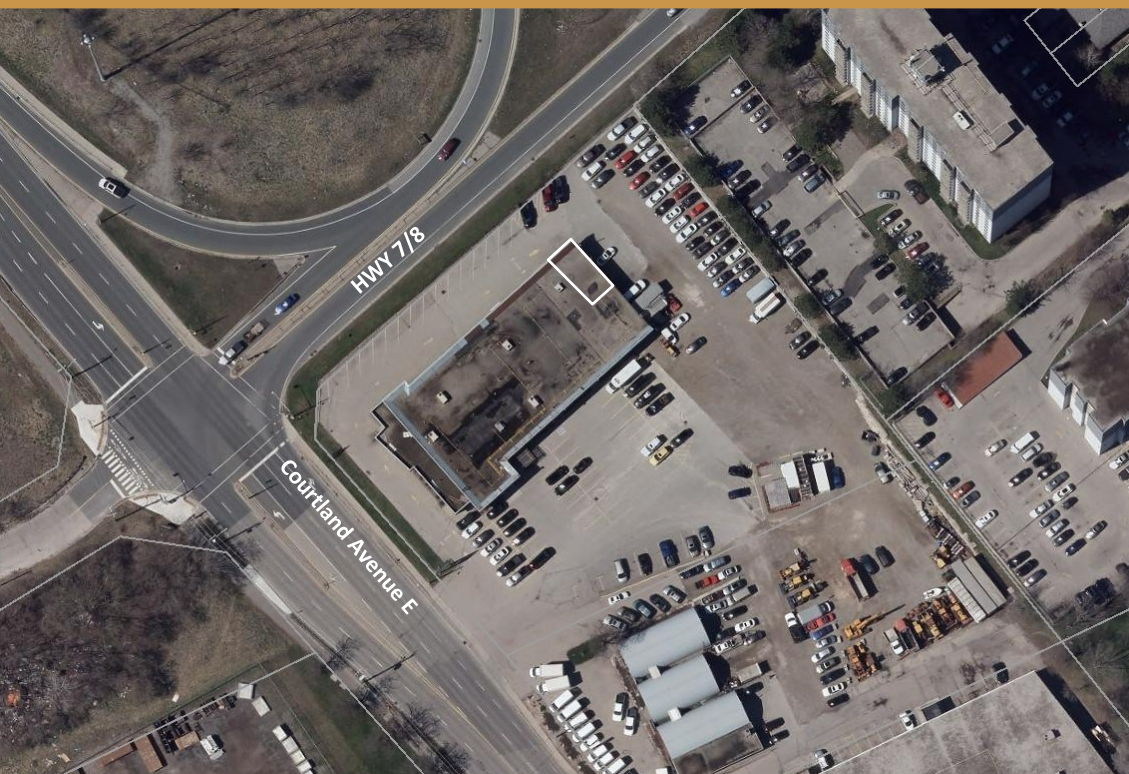
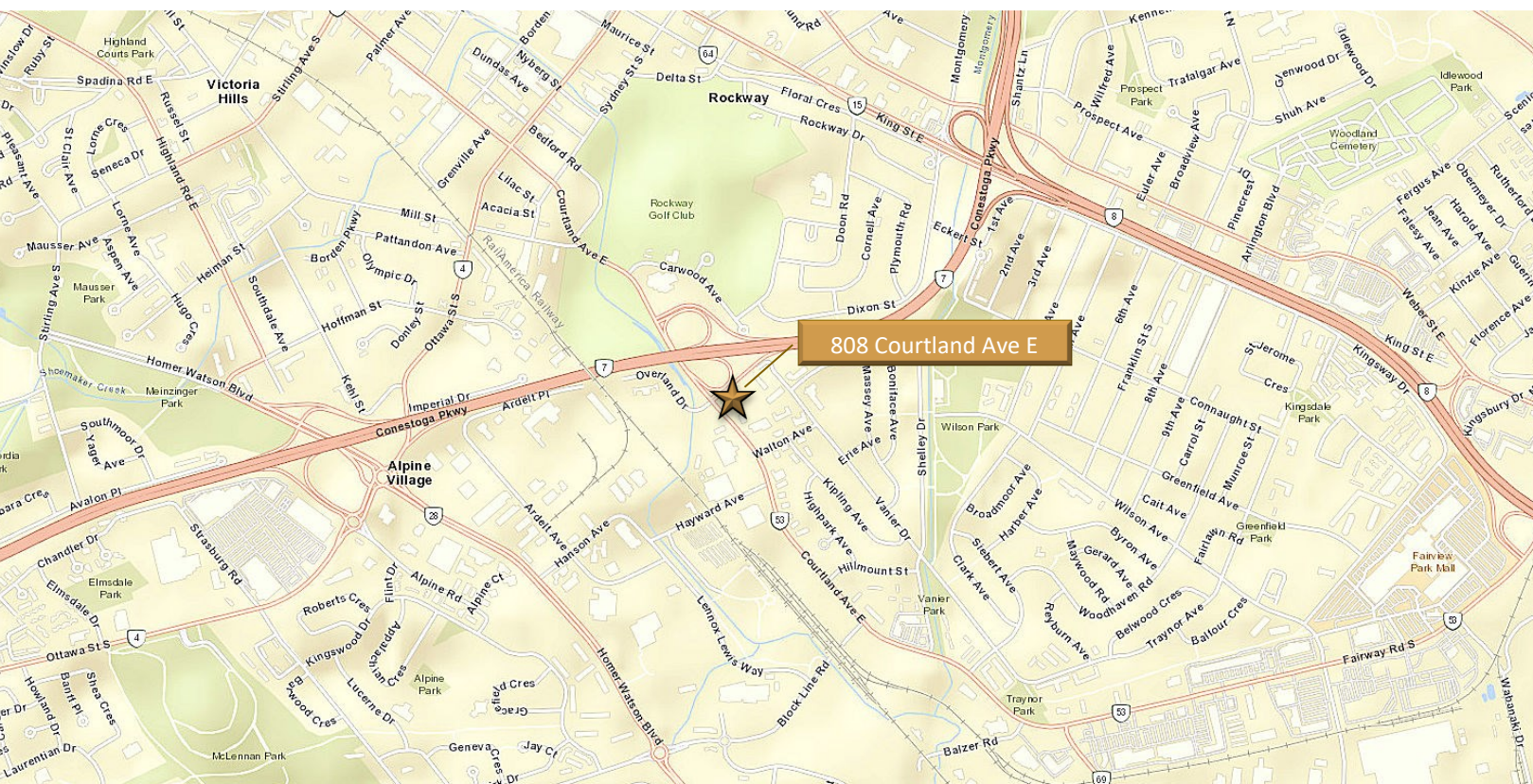
INDUSTRIAL/COMMERCIAL SPACE

808

COURTLAND AVENUE EAST, UNIT 9, KITCHENER

FOR LEASE

INDUSTRIAL/COMMERCIAL SPACE



MATT DICKSON
SALES REPRESENTATIVE
MATT@COUPALMARKOU.COM
519-742-7000 x 104

MICHAEL CONRAD
SALES REPRESENTATIVE
MIKE@COUPALMARKOU.COM
519-742-7000 x 105

COUPAL MARKOU COMMERCIAL REAL ESTATE INC
150 KING STREET SOUTH
WATERLOO, ONTARIO N2J 1P6
OFFICE 519-742-7000
FAX 519-742-7070



www.coupalmarkou.com

AVAILABILITY

Unit 9 - 842 sq ft

LEASE RATE

\$12.95/sq ft net

ADDITIONAL RENT

\$9.74/sq ft
plus utilities

ZONING

C-6

POSSESSION

Immediate

FEATURES

- * Located on Courtland Ave E at the Highway 7/8 on-ramp
- * 1,125 sq ft industrial/commercial unit
- * 9.5 x 8' drive in door
- * Office and open area with a washroom and floor drainage
- * High daily vehicle traffic with excellent visibility and signage opportunity
- * Free on-site parking
- * Utilities are in addition
- * C-6 zoning allows for many uses

MATT DICKSON
SALES REPRESENTATIVE
MATT@COUPALMARKOU.COM
519-742-7000 x 104

MICHAEL CONRAD
SALES REPRESENTATIVE
MIKE@COUPALMARKOU.COM
519-742-7000 x 105

COUPAL MARKOU COMMERCIAL REAL ESTATE INC
150 KING STREET SOUTH
WATERLOO, ONTARIO N2J 1P6
OFFICE 519-742-7000
FAX 519-742-7070



www.coupalmarkou.com

This disclaimer shall apply to Coupal Markou Commercial Real Estate Inc., Brokerage, to include all employees and independent contractors. The information set out herein is for advertising purposes, and any images, assumptions, estimates and property details have been obtained from sources deemed to be reliable. No warranty or representation is made as to its accuracy, correctness and completeness of the information, being subject to errors, omissions, conditions, prior sale / lease, withdrawal or other changes without notice. The recipient of the information should conduct its own inquiries and investigations prior to placing any reliance upon the information. MLS

808

COURTLAND AVENUE EAST, UNIT 9, KITCHENER

FOR LEASE

INDUSTRIAL/COMMERCIAL SPACE

UNIT 9 - 842 sq ft

