

## Retail Availability



### STRATFORD MALL DETAILS

- ⇒ 40+ High profile Retail, food and service providers
- ⇒ Anchored by: Hart House & Home/ Sportchek/ Winners/ Dollarama and many others
- ⇒ Great Central Stratford Location on the corner of Ontario Street and C.H. Meier Boulevard
- ⇒ Average daily vehicle traffic: 24,349 Per city of Stratford July 2022
- ⇒ Upcoming façade and food court renovations
- ⇒ Pylon and building façade signage opportunities
- ⇒ Open daily from 10am -9pm  
*\*individual store hours may differ*



\* Unit Sizes from 500 sq ft and up



\* 3.24km to Downtown



\* 720+ of free on-site parking spaces



\* Bus stop Beside and in front of Mall



\* 265,000 sq ft of Class A retail space

**MATT DICKSON**  
 SALES REPRESENTATIVE  
[MATT@COUPALMARKOU.COM](mailto:MATT@COUPALMARKOU.COM)  
 519-742-7000 x 104

**MICHAEL CONRAD**  
 SALES REPRESENTATIVE  
[MIKE@COUPALMARKOU.COM](mailto:MIKE@COUPALMARKOU.COM)  
 519-742-7000 x 105

**COUPAL MARKOU COMMERCIAL REAL ESTATE INC.**  
 150 KING STREET SOUTH WATERLOO, ON N2J 1P6  
 OFFICE: 519-742-7000  
 FAX: 519-742-7070  
[www.coupalmarkou.com](http://www.coupalmarkou.com)

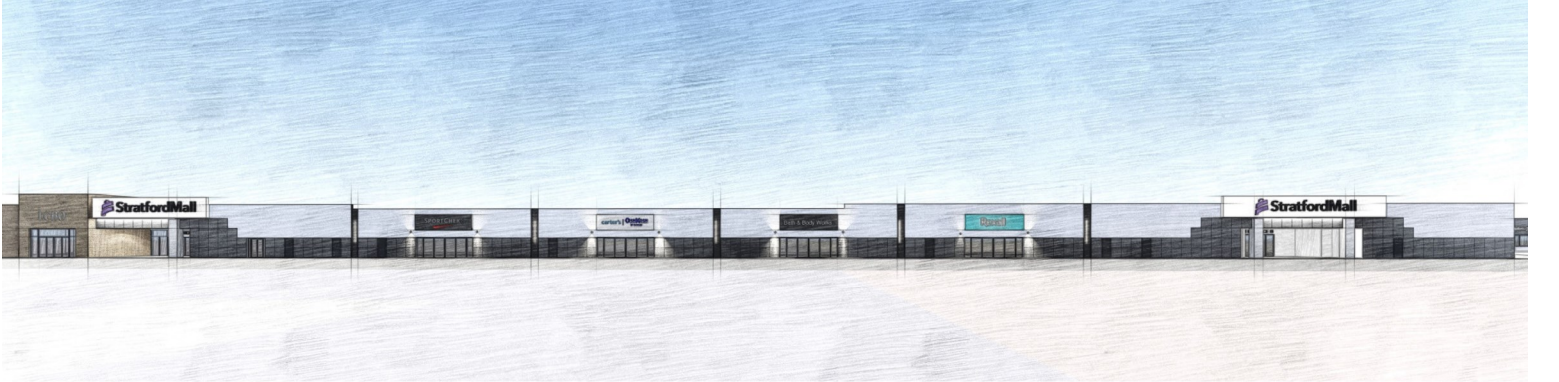
**265,000 sq. ft.** of retail space serving a population of over **81,000** in Perth County



**Units Available For Lease**

Unit #	Size
G4	1,594 sq ft
D5	2,015 sq ft
H17	Food Court

**Anchor Tenants**      **Pad Units**



# UNIT G4

### AVAILABILITY

1,594 sq ft

### LEASE RATE

\$32.00/sq ft Net

### ADDITIONAL RENT

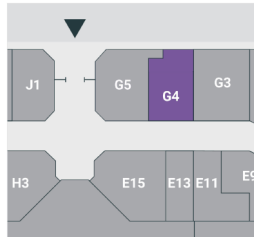
\$14.00/sq ft  
*Plus Utilities*

### ZONING

C4

### POSSESSION

Negotiable



### FEATURES

- \* Space to have interior/ exterior access
- \* Desirable size unit newly opened up

**\*\* 24 hour Exterior access**



# UNIT D5

## AVAILABILITY

2,015 sq ft

## LEASE RATE

\$32.00/sq ft Net

## ADDITIONAL RENT

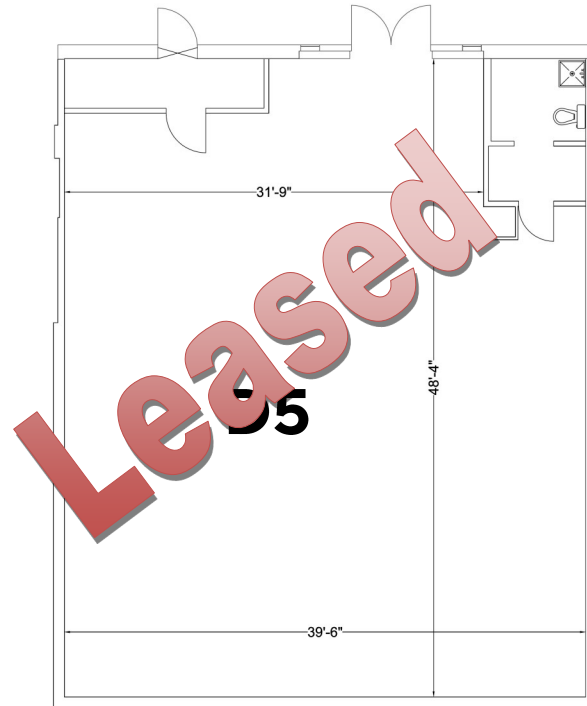
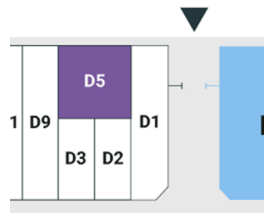
\$12.60/sq ft  
Plus Utilities

## ZONING

C4

## POSSESSION

Negotiable



## FEATURES

- \* Space to have exterior access only
- \* Most desired retail unit size

**\*\* 24 hour Exterior access**



# UNIT H17

## AVAILABILITY

325 sq ft

## LEASE RATE

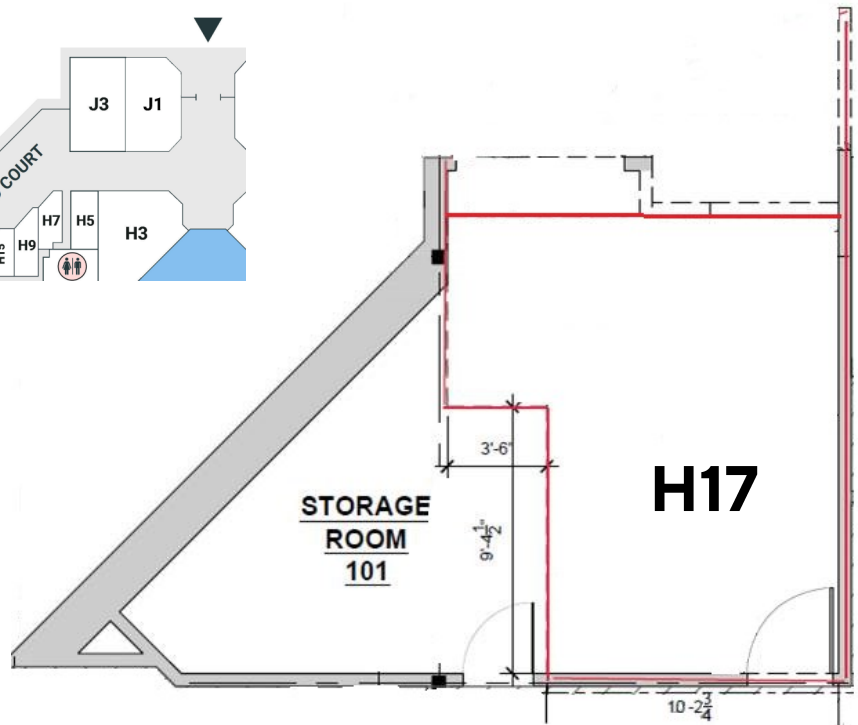
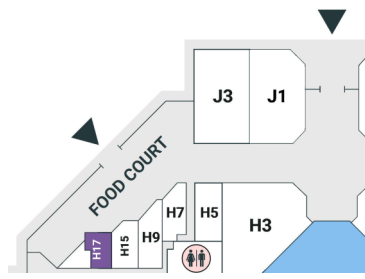
\$2,925.00/Month  
Plus Utilities

## ZONING

C4

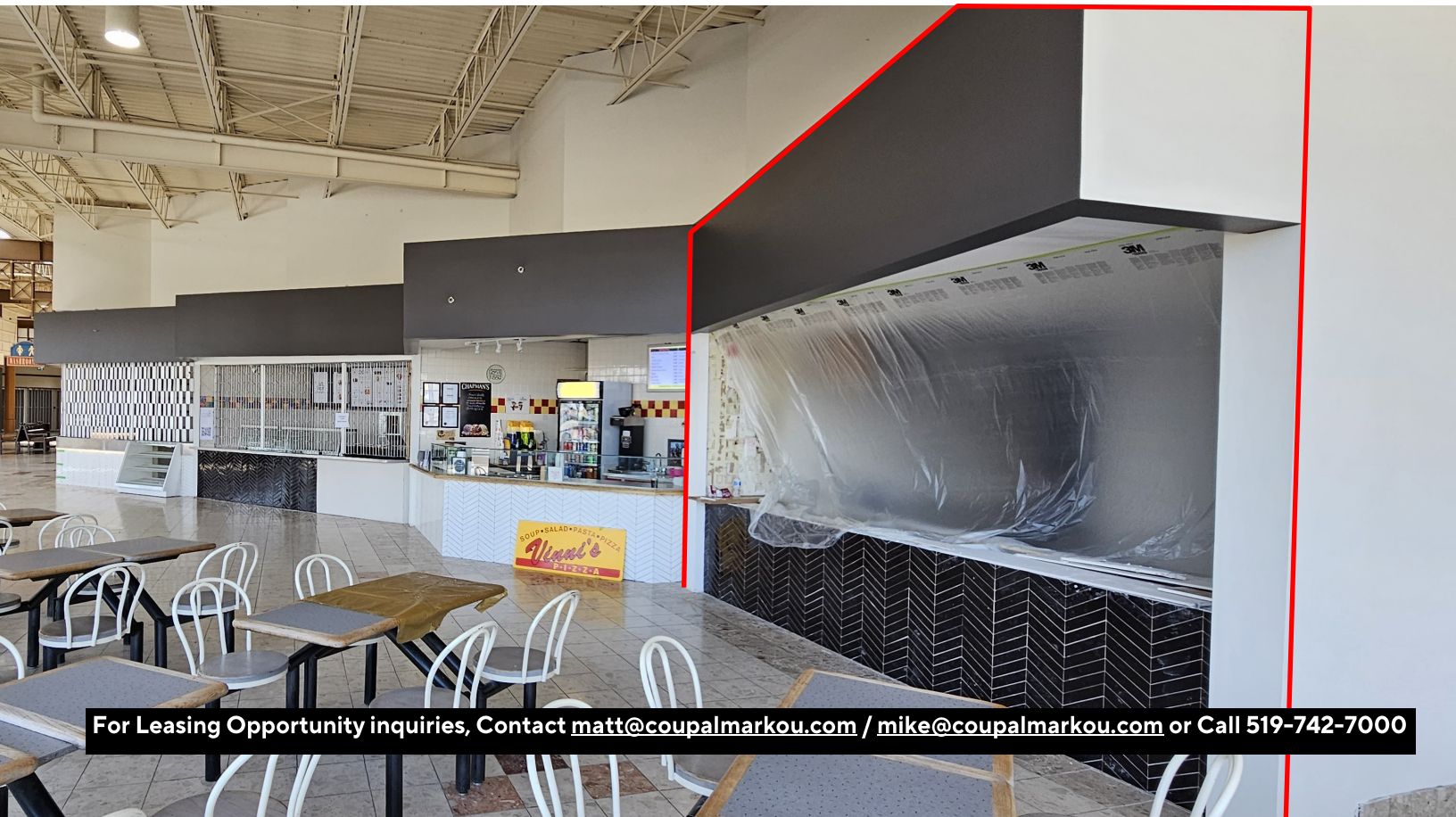
## POSSESSION

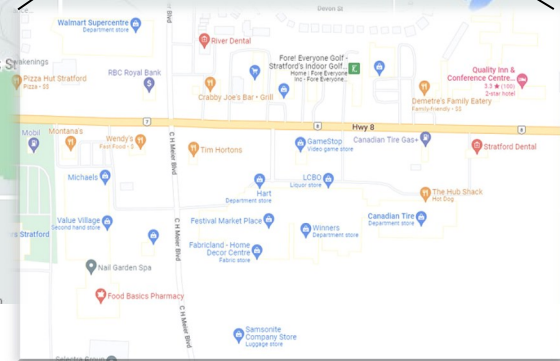
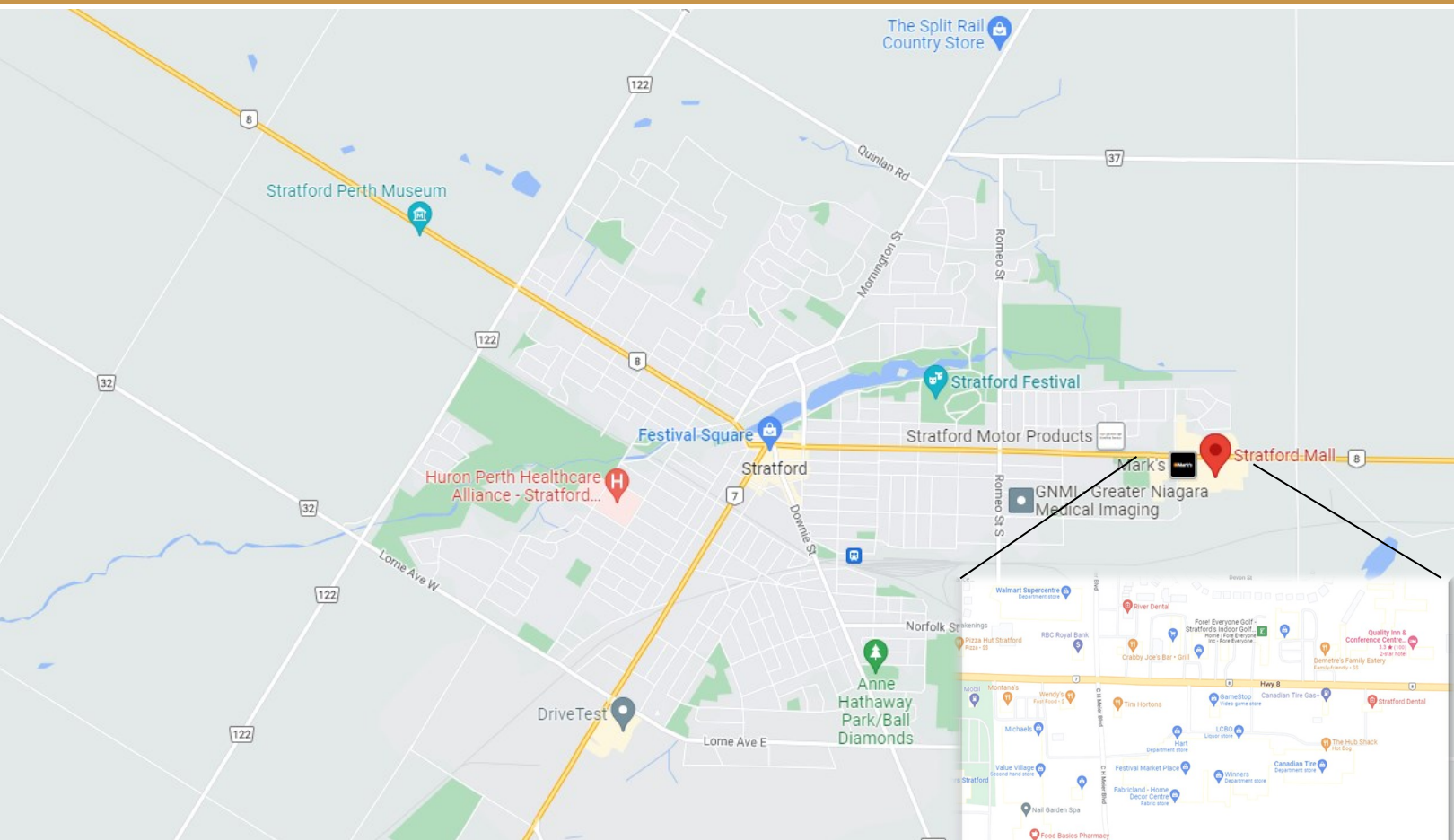
Immediate



## FEATURES

- \* Food court location
- \* Rent includes food court cleaning and tray service





## GET TO KNOW THE AREA

Conveniently located 40km west of Kitchener and 50km Northeast of London, at the juncture of Highway 7 and Highway 8, Stratford has grown to become Canada's premier arts town. Situated on Ontario Street in the midst of big box retailers and destination dining options Stratford Mall is the choice shopping center serving all of Perth County.

Although Stratford is a small, rural town, it still draws a significant number of tourists to Stratford Festival each year. Nearly one million visitors annually enjoy the festival, its performances and the many educational programmes

Stratford has experienced tremendous growth and has become a destination community where boutique businesses can thrive. A future workforce is growing in the immediate area with more than 277 new residential dwellings completed in 2021 alone.

(Source: CMHC April 2022)

**MICHAEL CONRAD**  
SALES REPRESENTATIVE  
[MIKE@COUPALMARKOU.COM](mailto:MIKE@COUPALMARKOU.COM)  
519-742-7000 x 105

**MATT DICKSON**  
SALES REPRESENTATIVE  
[MATT@COUPALMARKOU.COM](mailto:MATT@COUPALMARKOU.COM)  
519-742-7000 x 104

**COUPAL MARKOU COMMERCIAL REAL ESTATE INC.**  
150 KING STREET SOUTH WATERLOO, ON N2J 1P6  
OFFICE: 519-742-7000  
FAX: 519-742-7070  
[www.coupalmarkou.com](http://www.coupalmarkou.com)