

# 32

## SPACE AVAILABLE IN LANDMARK CHURCH

### WEBER STREET WEST, WATERLOO - REAR UNIT

## FOR LEASE



#### AVAILABILITY

3,931 Sq Ft

#### LEASE RATE

\$5,000/Monthly  
*plus utilities*

#### ZONING

CR-3

#### POSSESSION

90 days notice

- \* Located on Weber Street W, between Queen Street N and Young St
- \* 3,931 sq ft of main floor space in Down Town Kitchener
- \* Formally Zion United Church, space could be used for a number of institutional, financial, office or personal service uses
- \* Excellent on-site parking

MATT DICKSON  
SALES REPRESENTATIVE  
[MATT@COUPALMARKOU.COM](mailto:MATT@COUPALMARKOU.COM)  
519-742-7000 x 104

MICHAEL CONRAD  
SALES REPRESENTATIVE  
[MIKE@COUPALMARKOU.COM](mailto:MIKE@COUPALMARKOU.COM)  
519-742-7000 x 105

**COUPAL MARKOU COMMERCIAL  
REAL ESTATE INC**  
150 KING STREET SOUTH  
WATERLOO, ONTARIO N2J 1P6  
OFFICE 519-742-7000  
FAX 519-742-7070

**Coupal Markou**

Commercial Real Estate Inc., Brokerage

[www.coupalmarkou.com](http://www.coupalmarkou.com)



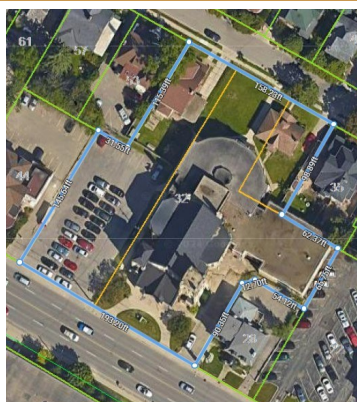
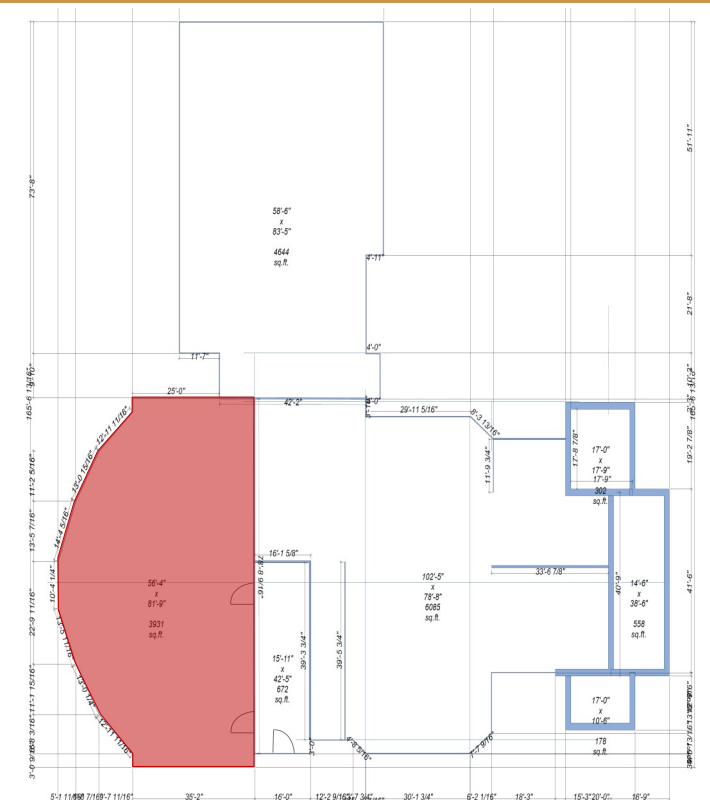


# 32

# FOR LEASE

## SPACE AVAILABLE IN LANDMARK CHURCH

### WEBER STREET WEST, WATERLOO - REAR UNIT



MATT DICKSON  
SALES REPRESENTATIVE  
[MATT@COUPALMARKOU.COM](mailto:MATT@COUPALMARKOU.COM)  
519-742-7000 x 104

MICHAEL CONRAD  
SALES REPRESENTATIVE  
[MIKE@COUPALMARKOU.COM](mailto:MIKE@COUPALMARKOU.COM)  
519-742-7000 x 105

**COUPAL MARKOU COMMERCIAL  
REAL ESTATE INC**  
150 KING STREET SOUTH  
WATERLOO, ONTARIO N2J 1P6  
OFFICE 519-742-7000  
FAX 519-742-7070



This disclaimer shall apply to Coupal Markou Commercial Real Estate Inc., Brokerage, to include all employees and independent contractors. The information set out herein is for advertising purposes, and any images, assumptions, estimates and property details have been obtained from sources deemed to be reliable. No warranty or representation is made as to its accuracy, correctness and completeness of the information, being subject to errors, omissions, conditions, prior sale / lease, withdrawal or other changes without notice. The recipient of the information should conduct its own inquiries and investigations prior to placing any reliance upon the information. MLS