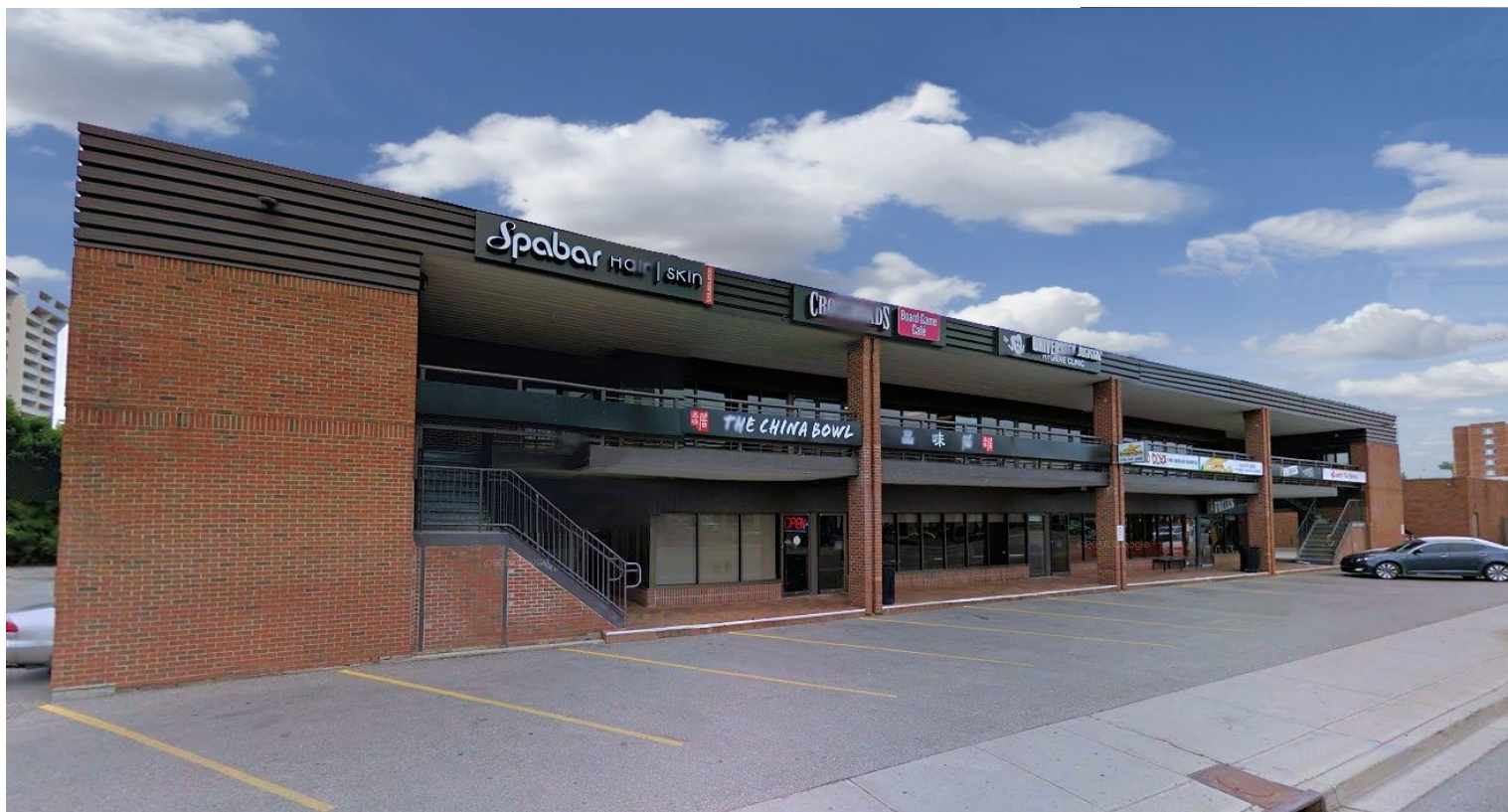


FOR LEASE

RETAIL/COMMERCIAL SPACE

258 KING STREET NORTH, UNIT 8, WATERLOO



AVAILABILITY

UNIT 8 - 4,750 SQ FT
UNIT 8A - 2,550 SQ FT
UNIT 8B - 2,200 SQ FT

LEASE RATE

UNIT 8-\$20.00/ SQ FT
UNIT 8A/8B-\$22.00/SQ FT

ADDITIONAL RENT

\$12.00/ SQ FT

ZONING

C1-81

POSSESSION

IMMEDIATE

- * Located on King Street North, near University Avenue East
- * 2nd floor retail/commercial space
- * On-site parking and excellent visibility
- * Join Tenants: Burrito Boyz, Crossroads Board Game Café, Kim's Kitchen, The China Bowl, Shawarma Royale, dental clinic and more
- * Across the street from Wilfrid Laurier University and 2 blocks east of University of Waterloo

MATT DICKSON
SALES REPRESENTATIVE
MATT@COUPALMARKOU.COM
519-742-7000 x 104

MIKE CONRAD
SALES REPRESENTATIVE
MIKE@COUPALMARKOU.COM
519-742-7000 x 105

**COUPAL MARKOU COMMERCIAL
REAL ESTATE INC.**
150 KING STREET SOUTH
WATERLOO, ONTARIO N2J 1P6
OFFICE 519-742-7000
FAX 519-742-7070

Coupal Markou

Commercial Real Estate Inc., Brokerage

www.coupalmarkou.com

FOR LEASE RETAIL/COMMERCIAL SPACE 258 KING STREET NORTH, UNIT 8, WATERLOO



MATT DICKSON
SALES REPRESENTATIVE
MATT@COUPALMARKOU.COM
519-742-7000 x 104

MIKE CONRAD
SALES REPRESENTATIVE
MIKE@COUPALMARKOU.COM
519-742-7000 x 105

COUPAL MARKOU COMMERCIAL
REAL ESTATE INC.
150 KING STREET SOUTH
WATERLOO, ONTARIO N2J 1P6
OFFICE 519-742-7000
FAX 519-742-7070



Commercial Real Estate Inc., Brokerage

www.coupalmarkou.com

This disclaimer shall apply to Coupal Markou Commercial Real Estate Inc., Brokerage, to include all employees and independent contractors. The information set out herein is for advertising purposes, and any images, assumptions, estimates and property details have been obtained from sources deemed to be reliable. No warranty or representation is made as to its accuracy, correctness and completeness of the information, being subject to errors, omissions, conditions, prior sale / lease, withdrawal or other changes without notice. The recipient of the information should conduct its own inquiries and investigations prior to placing any reliance upon the information. MLS