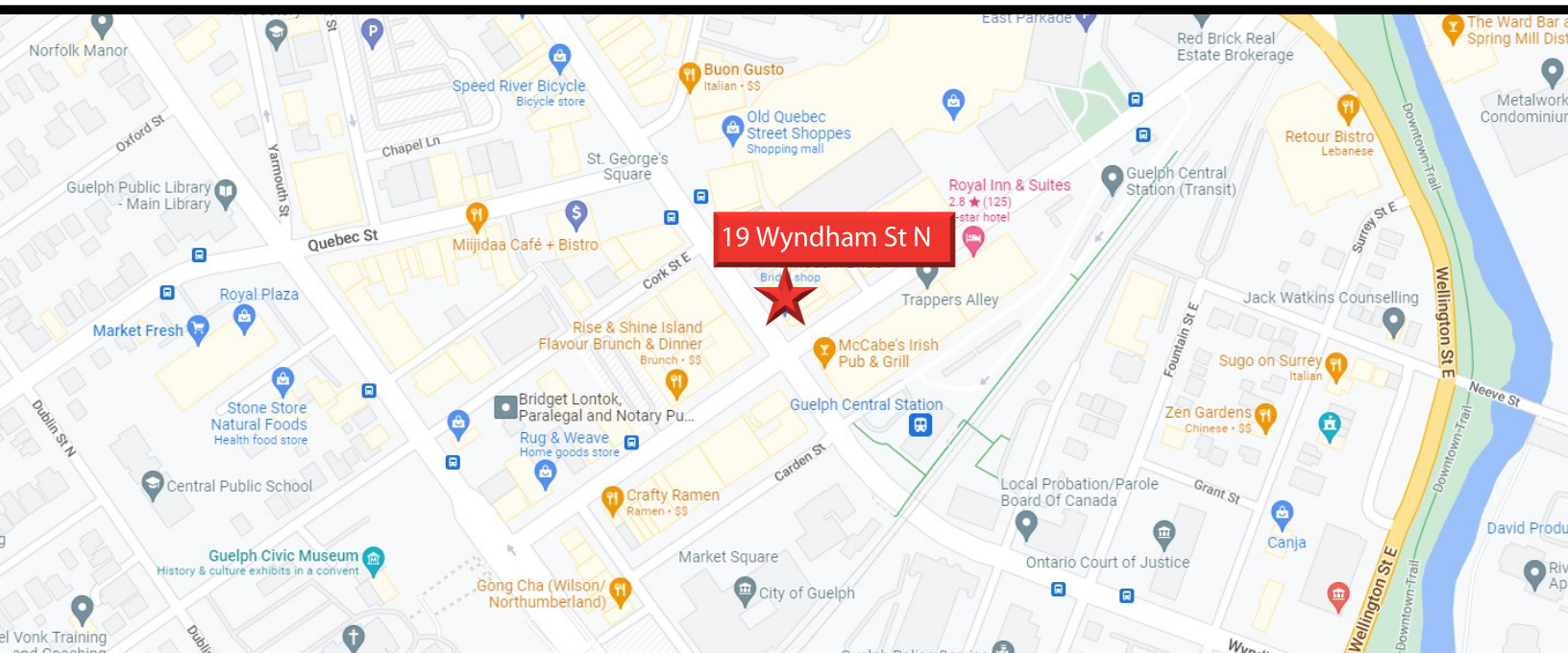


19 WYNDHAM STREET NORTH, GUELPH



Funky Office Space Available in the Heart of Downtown Guelph



19 WYNDHAM STREET NORTH, GUELPH

Peter Kruschen
Sales Representative
519-742-7000 → x106
peter@coupalmarkou.com

Brooks Way
Broker
519-742-7000 → x 112
brooks@coupalmarkou.com

150 KING STREET SOUTH
WATERLOO, ON N2J 1P6
OFFICE : 519-742-7000
FAX: 519-742-7070

COUPAL MARKOU COMMERCIAL REAL ESTATE INC.



FOR LEASE

Peter Kruschen
Sales Representative
519-742-7000 → x106
peter@coupalmarkou.com

Brooks Way
Broker
519-742-7000 → x 112
brooks@coupalmarkou.com

150 King Street South
Waterloo, On N2J 1P6
Office : 519-742-7000
Fax: 519-742-7070

COUPAL MARKOU COMMERCIAL REAL ESTATE INC.

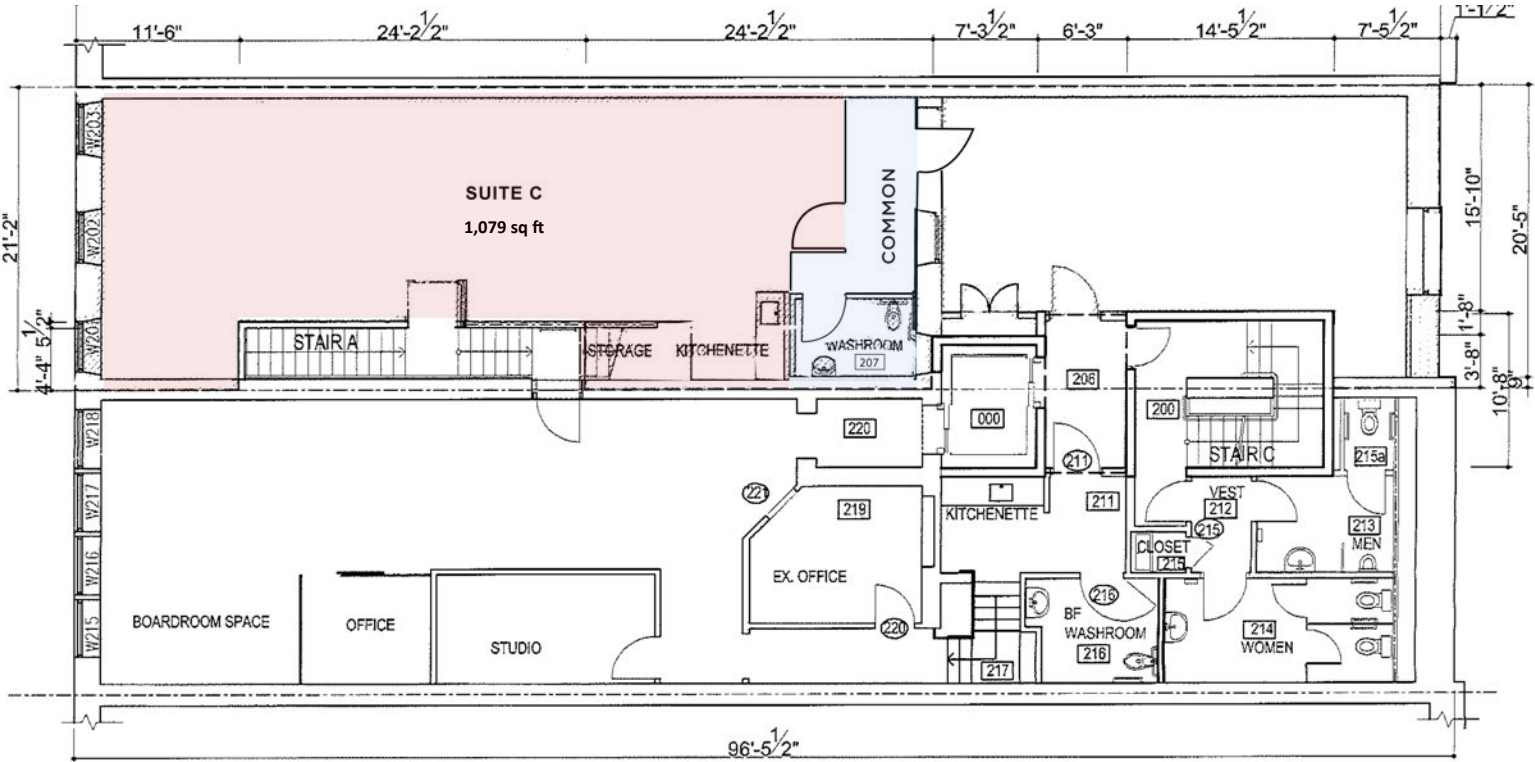


This disclaimer shall apply to Coupal Markou Commercial Real Estate Inc., Brokerage, to include all employees and independent contractors. The information set out herein is for advertising purposes, and any images, assumptions, estimates and property details have been obtained from sources deemed to be reliable. No warranty or representation is made as to its accuracy, correctness and completeness of the information, being subject to errors, omissions, conditions, prior sale / lease, withdrawal or other changes without notice. The recipient of the information should conduct its own inquiries and investigations prior to placing any reliance upon the information.

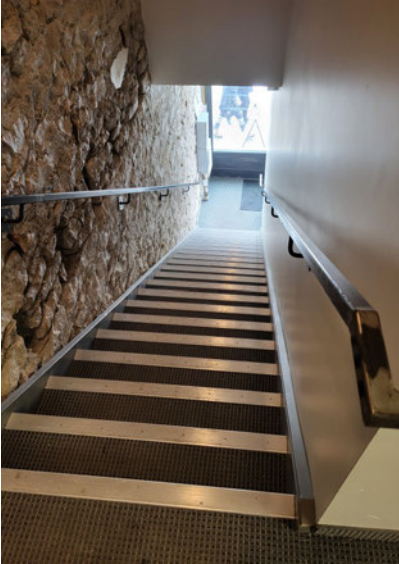
MLS

19 WYNDHAM STREET NORTH, GUELPH

FOR LEASE



| |
|----------------------------------------------------------|
| AVAILABILITY UNIT C - 1,079 SQ FT |
| LEASE RATE \$20.00/ SQ FT NET |
| ADDITIONAL RENT \$9.25/SQ FT PLUS UTILITIES |
| ZONING D.1-1 |
| POSSESSION IMMEDIATE |



Highlights

- ◆ Impressive 2nd floor “funky” one of a kind office space in downtown Guelph
- ◆ Fully assessable with elevator, large windows overlooking Wyndham Street
- ◆ All the modern conveniences in a heritage building including meeting room, large open studio space, kitchenette.
- ◆ Located on the corner of Wyndham Street and McDonnell Street with easy access to downtown retail, restaurants, financial institutes and public transportation
- ◆ Ideal for design/creative studio, tech office, general office

