



FOR LEASE

136 King Street S, Waterloo

PROPERTY SPECIFICATIONS

Availability 3,590 sq ft

CAM \$13.07

Zoning U1-16

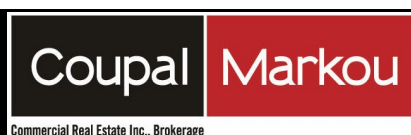
Possession Immediate

PROPERTY HIGHLIGHTS

- Fully demised, move in ready 3,590 sq ft of professional office space
- located on the entire 3rd floor of HSBC building completed with quality finishes.
- Situated on the corner of King St S and William St E in Uptown Waterloo.
- High visibility with windows on 3 sides of the building.
- Parking for 2 plus 1 shared barrier free spot.
- Direct access including elevator accessibility to this clean modern space.
- Steps from King St ION Light Rail Transit Station.

Net Lease Price \$18.50

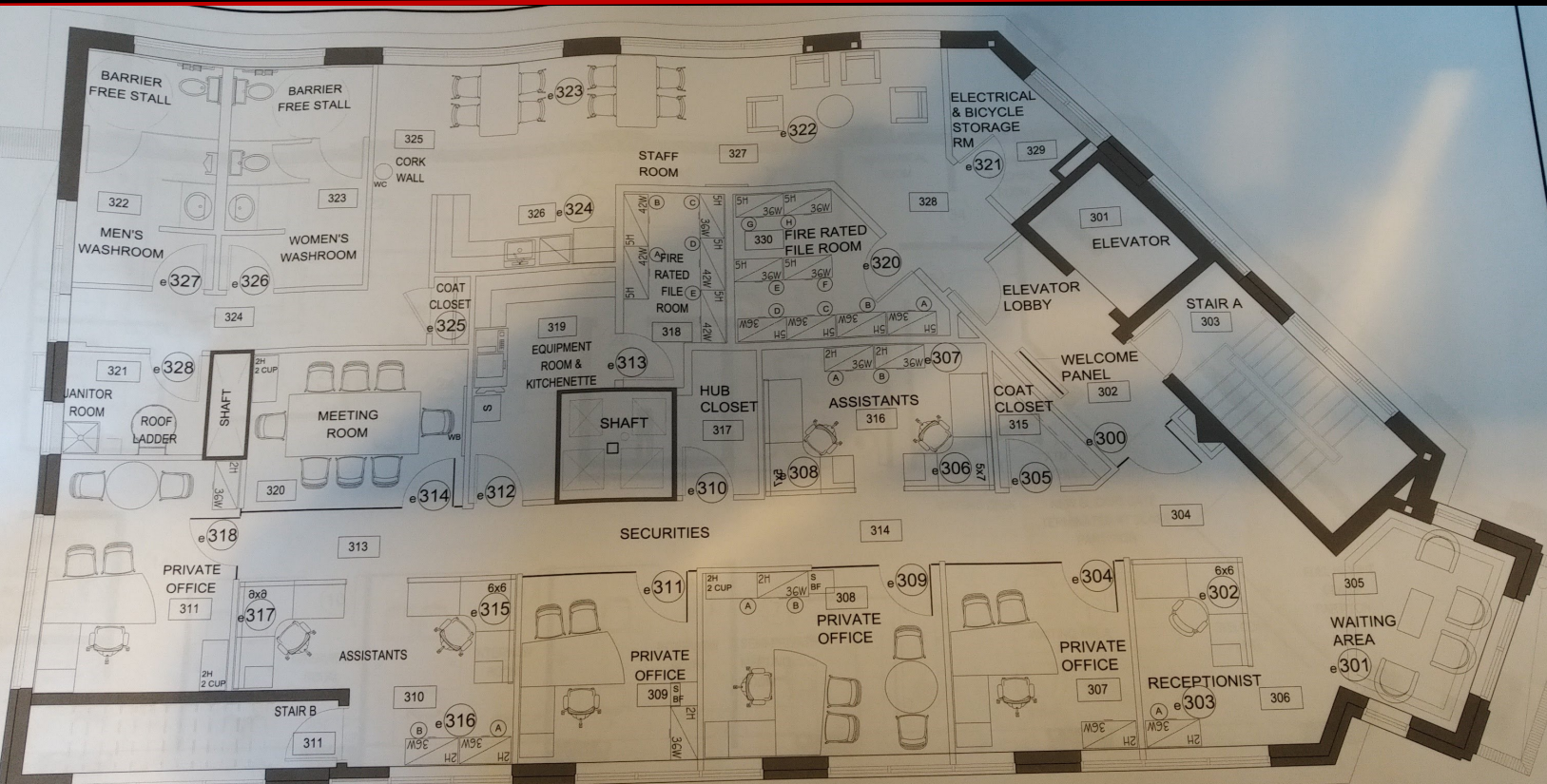
This disclaimer shall apply to Coupal Markou Commercial Real Estate Inc., Brokerage, to include all employees and independent contractors. The information set out herein is for advertising purposes, and any images, assumptions, estimates and property details have been obtained from sources deemed to be reliable. No warranty or representation is made as to its accuracy, correctness and completeness of the information, being subject to errors, omissions, conditions, prior sale / lease, withdrawal or other changes without notice. The recipient of the information should conduct its own inquiries and investigations prior to placing any reliance upon the information. MLS



www.coupalmarkou.com

John Markou
Broker
John@coupalmarkou.com
519-742-7000 x 102

136 King Street S, Waterloo



This disclaimer shall apply to Coupal Markou Commercial Real Estate Inc., Brokerage, to include all employees and independent contractors. The information set out herein is for advertising purposes, and any images, assumptions, estimates and property details have been obtained from sources deemed to be reliable. No warranty or representation is made as to its accuracy, correctness and completeness of the information, being subject to errors, omissions, conditions, prior sale / lease, withdrawal or other changes without notice. The recipient of the information should conduct its own inquiries and investigations prior to placing any reliance upon the information. MLS

Coupal Markou
Commercial Real Estate Inc., Brokerage
www.coupalmarkou.com

John Markou
Broker
John@coupalmarkou.com
519-742-7000 x 102