

FOR LEASE
STREET FRONT RETAIL SPACE
27 QUEBEC STREET, GUELPH



This disclaimer shall apply to Coupal Markou Commercial Real Estate Inc., Brokerage, to include all employees and independent contractors. The information set out herein is for advertising purposes, and any images, assumptions, estimates and property details have been obtained from sources deemed to be reliable. No warranty or representation is made as to its accuracy, correctness and completeness of the information, being subject to errors, omissions, conditions, prior sale / lease, withdrawal or other changes without notice. The recipient of the information should conduct its own inquiries and investigations prior to placing any reliance upon the information. MLS

Peter Kruschen
Sales Representative
519-742-7000 x106
peter@coupalmarkou.com

Brooks Way
Broker
519-742-7000 x 112
brooks@coupalmarkou.com

**COUPAL MARKOU COMMERCIAL
REAL ESTATE INC.**
150 KING STREET SOUTH
WATERLOO, ONTARIO N2J 1P6
OFFICE 519-742-7000
FAX 519-742-7070

Coupal Markou
Commercial Real Estate Inc., Brokerage
www.coupalmarkou.com

FOR LEASE
STREET FRONT RETAIL SPACE
27 QUEBEC STREET, GUELPH



AVAILABILITY
2,149 SQ FT

LEASE RATE
\$22.50/ SQ FT NET

ADDITIONAL RENT
**\$5.00/ SQ FT
(TAXES ONLY)**

ZONING
D.1-1

POSSESSION
Immediate

- Located on Quebec Street, between St. Georges Square and Norfolk St
- 2,149 sq ft, Ground floor retail space plus mezzanine
- 618 sq. ft. mezzanines level at rear of the demised premises
- Includes partial basement use, not included in square footage
- High traffic area with great street exposure
- former florist, coolers still in place
- good signage
- On many public transit routes
- D.1-1 is ideal for many uses
- Immediate occupancy

Peter Kruschen
Sales Representative
519-742-7000 x106
peter@coupalmarkou.com

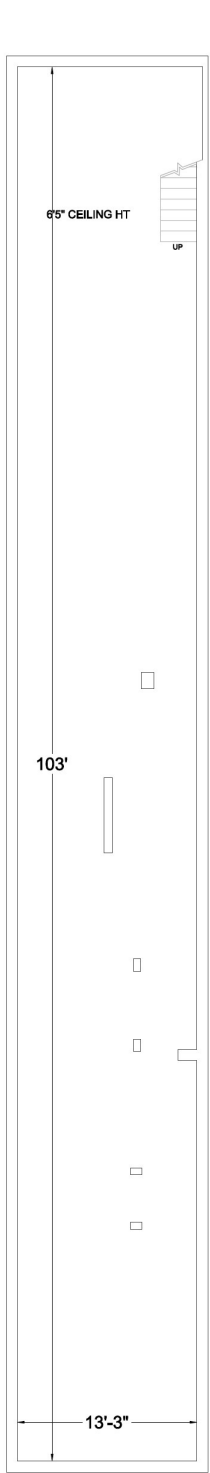
Brooks Way
Broker
519-742-7000 x 112
brooks@coupalmarkou.com

**COUPAL MARKOU COMMERCIAL
REAL ESTATE INC.**
150 KING STREET SOUTH
WATERLOO, ONTARIO N2J 1P6
OFFICE 519-742-7000
FAX 519-742-7070

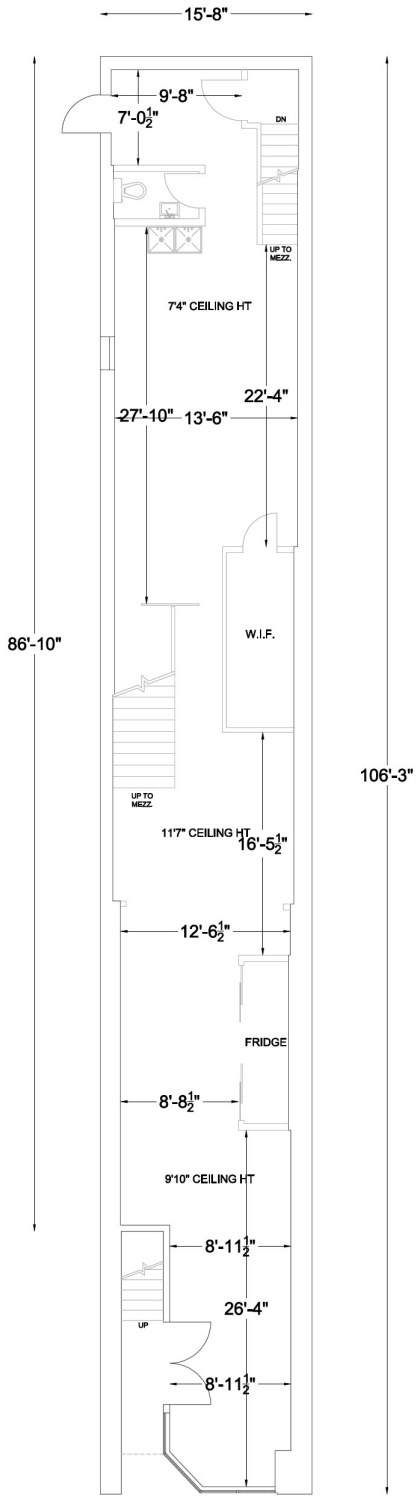
Coupal Markou
Commercial Real Estate Inc., Brokerage
www.coupalmarkou.com

FOR LEASE
STREET FRONT RETAIL SPACE

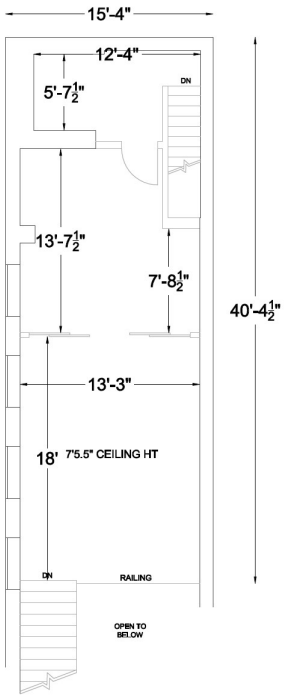
27 QUEBEC STREET, GUELPH



BASEMENT
1,365 SF



GROUND
1,531 SF



MEZZANINE
618 SF

