

21

YARMOUTH STREET, UNIT A, GUELPH

FOR LEASE TURNKEY RETAIL SPACE



AVAILABILITY

420 sq ft

LEASE RATE

\$25.00/sq ft Net

ADDITIONAL RENT

\$21.28/sq ft

ZONING

D.1-1

POSSESSION

IMMEDIATE

- * Located off of Quebec St onto Yarmouth St
- * Situated in a 3,000 sq ft building occupied by Hope Health Centre
- * High visibility
- * Ideally designed for a pharmacy
- * Steady patient in flow
- * 1 dedicated on-site parking space
- * Street parking available for patients

BROOKS WAY
BROKER
BROOKS@COUPALMARKOU.COM
519-742-7000 x 112
519-242-8642

MATT DICKSON
SALES REPRESENTATIVE
MATT@COUPALMARKOU.COM
519-742-7000 x 104

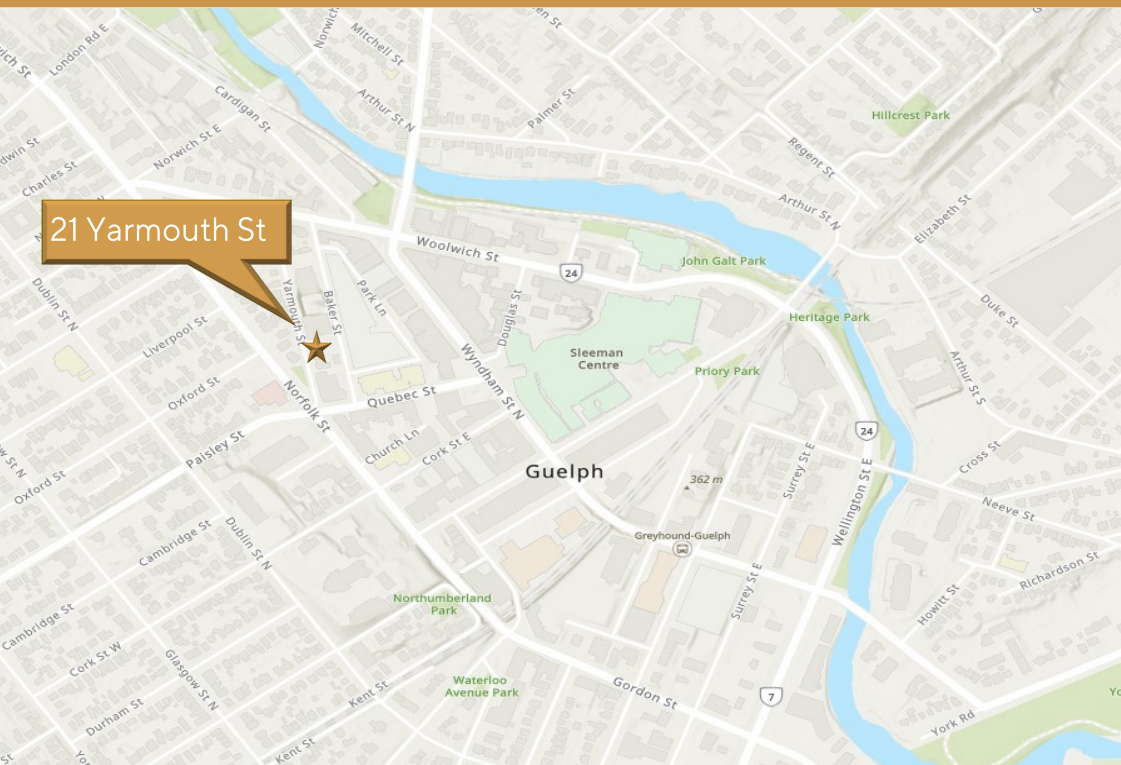
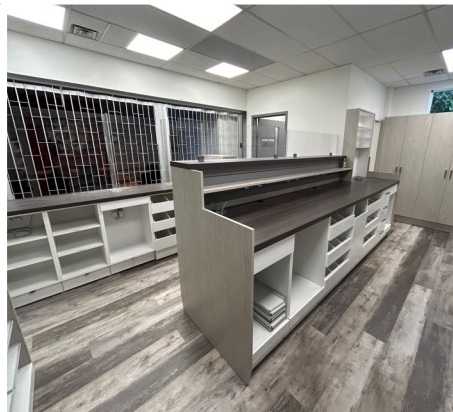
**COUPAL MARKOU COMMERCIAL
REAL ESTATE INC**
150 KING STREET SOUTH
WATERLOO, ONTARIO N2J 1P6
OFFICE 519-742-7000
FAX 519-742-7070



21

YARMOUTH STREET, UNIT A, GUELPH

FOR LEASE TURNKEY RETAIL SPACE



BROOKS WAY
BROKER
BROOKS@COUPALMARKOU.COM
519-742-7000 x 112
519-242-8642

MATT DICKSON
SALES REPRESENTATIVE
MATT@COUPALMARKOU.COM
519-742-7000 x 104

**COUPAL MARKOU COMMERCIAL
REAL ESTATE INC**
150 KING STREET SOUTH
WATERLOO, ONTARIO N2J 1P6
OFFICE 519-742-7000
FAX 519-742-7070



This disclaimer shall apply to Coupal Markou Commercial Real Estate Inc., Brokerage, to include all employees and independent contractors. The information set out herein is for advertising purposes, and any images, assumptions, estimates and property details have been obtained from sources deemed to be reliable. No warranty or representation is made as to its accuracy, correctness and completeness of the information, being subject to errors, omissions, conditions, prior sale / lease, withdrawal or other changes without notice. The recipient of the information should conduct its own inquiries and investigations prior to placing any reliance upon the information. MLS