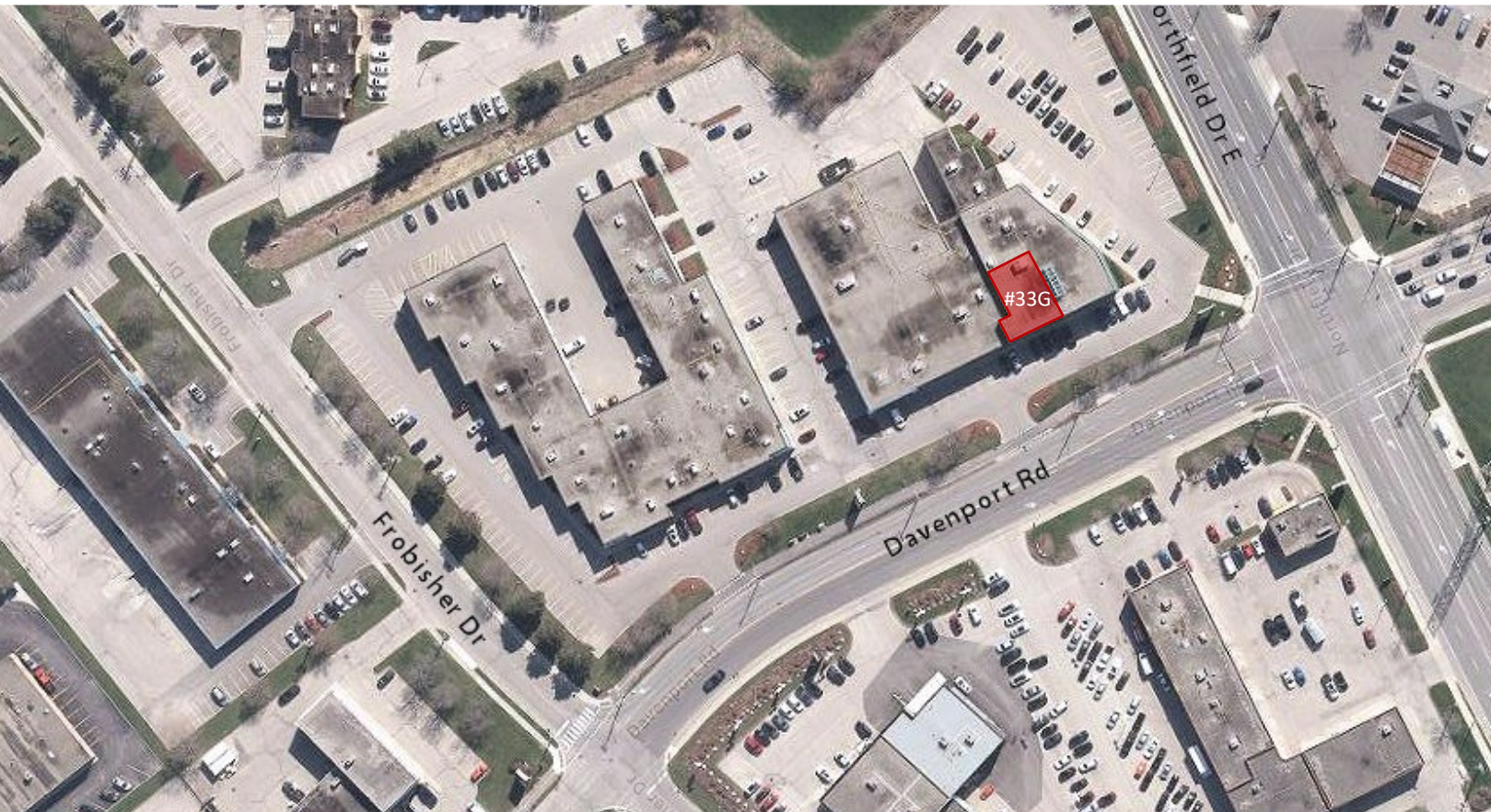


620

FOR LEASE
SERVICE/COMMERCIAL BUILDING

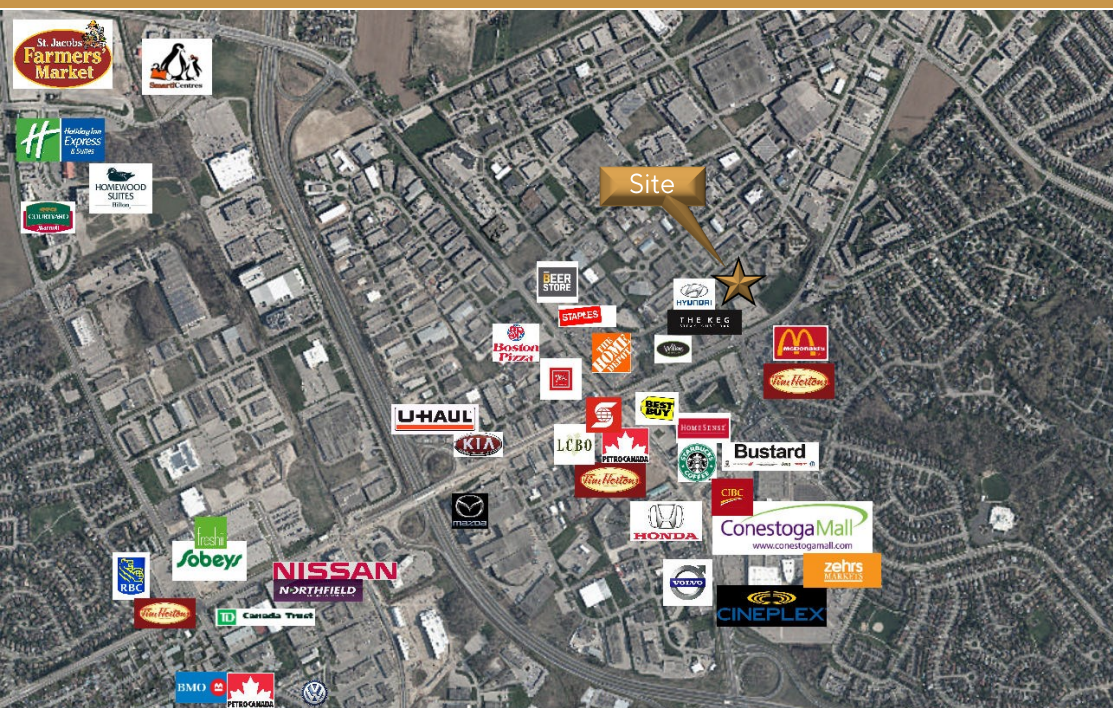
DAVENPORT ROAD, UNIT 33G, WATERLOO



620

FOR LEASE
SERVICE/COMMERCIAL BUILDING

DAVENPORT ROAD, UNIT 33G, WATERLOO



This disclaimer shall apply to Coupal Markou Commercial Real Estate Inc., Brokerage, to include all employees and independent contractors. The information set out herein is for advertising purposes, and any images, assumptions, estimates and property details have been obtained from sources deemed to be reliable. No warranty or representation is made as to its accuracy, correctness and completeness of the information, being subject to errors, omissions, conditions, prior sale / lease, withdrawal or other changes without notice. The recipient of the information should conduct its own inquiries and investigations prior to placing any reliance upon the information. MLS

MICHAEL CONRAD
SALES REPRESENTATIVE
MIKE@COUPALMARKOU.COM
519-742-7000 x 105

MATT DICKSON
SALES REPRESENTATIVE
MATT@COUPALMARKOU.COM
519-742-7000 x 104

**COUPAL MARKOU COMMERCIAL
REAL ESTATE INC**
150 KING STREET SOUTH
WATERLOO, ONTARIO N2J 1P6

OFFICE 519-742-7000
FAX 519-742-7070
Coupal Markou
Commercial Real Estate Inc., Brokerage
www.coupalmarkou.com

AVAILABILITY

33G - 2,768 sq ft

LEASE RATE

\$17.95/sq ft net

ADDITIONAL RENT

\$7.50/sq ft

ZONING

E1-27

POSSESSION

IMMEDIATE

* Located on the corner of Davenport Rd and Northfield Drive East in the Northland Business Park

* 2,768 sq ft of Ground floor Sales/Service Commercial Space available in high profile building

* Fully air conditioned

* Low additional rent for this quality of space

* On bus route and near LRT station at Conestoga Mall

* Pylon and Façia signage available

* Ample, free on-site parking

* Close to Conestoga expressway/Hwy 85 with easy access to surrounding towns: Elmira, Kitchener and Guelph

MICHAEL CONRAD
SALES REPRESENTATIVE
MIKE@COUPALMARKOU.COM
519-742-7000 x 105

MATT DICKSON
SALES REPRESENTATIVE
MATT@COUPALMARKOU.COM
519-742-7000 x 104

**COUPAL MARKOU COMMERCIAL
REAL ESTATE INC**
150 KING STREET SOUTH
WATERLOO, ONTARIO N2J 1P6
OFFICE 519-742-7000
FAX 519-742-7070

Coupal Markou
Commercial Real Estate Inc., Brokerage
www.coupalmarkou.com

DAVENPORT ROAD, UNIT 33G, WATERLOO

FOR LEASE
SERVICE/COMMERCIAL BUILDING



UNIT 33G - 2,768 SF

