

FOR LEASE 1373

WALK-UP RETAIL/ COMMERCIAL SERVICE SPACE

VICTORIA STREET NORTH, UNIT 2, KITCHENER



AVAILABILITY

2,808 sq ft

LEASE RATE

\$15.95/sq ft Net

ADDITIONAL RENT

\$11.98/sq ft
Plus Utilities

ZONING

COM-2

POSSESSION

IMMEDIATE

- * Located on Victoria St N, near Lackner Blvd and Bingemans Centre Dr
- * Retail/Service commercial space in Clean, well maintained building
- * Newly updated exterior and roof (2020)
Abundant free, on-site parking
- * Great street visibility, signage and storefront
- * Fully air conditioned
- * Trunkey suite with high end finishes less than two years old
- * Nestled nicely in between Residential and Industrial/Retail/Office Zones

MATT DICKSON
SALES REPRESENTATIVE
MATT@COUPALMARKOU.COM
519-742-7000 x 104

MICHAEL CONRAD
SALES REPRESENTATIVE
MIKE@COUPALMARKOU.COM
519-742-7000 x 105

**COUPAL MARKOU COMMERCIAL
REAL ESTATE INC**
150 KING STREET SOUTH
WATERLOO, ONTARIO N2J 1P6
OFFICE 519-742-7000
FAX 519-742-7070

Coupal Markou
Commercial Real Estate Inc., Brokerage
www.coupalmarkou.com

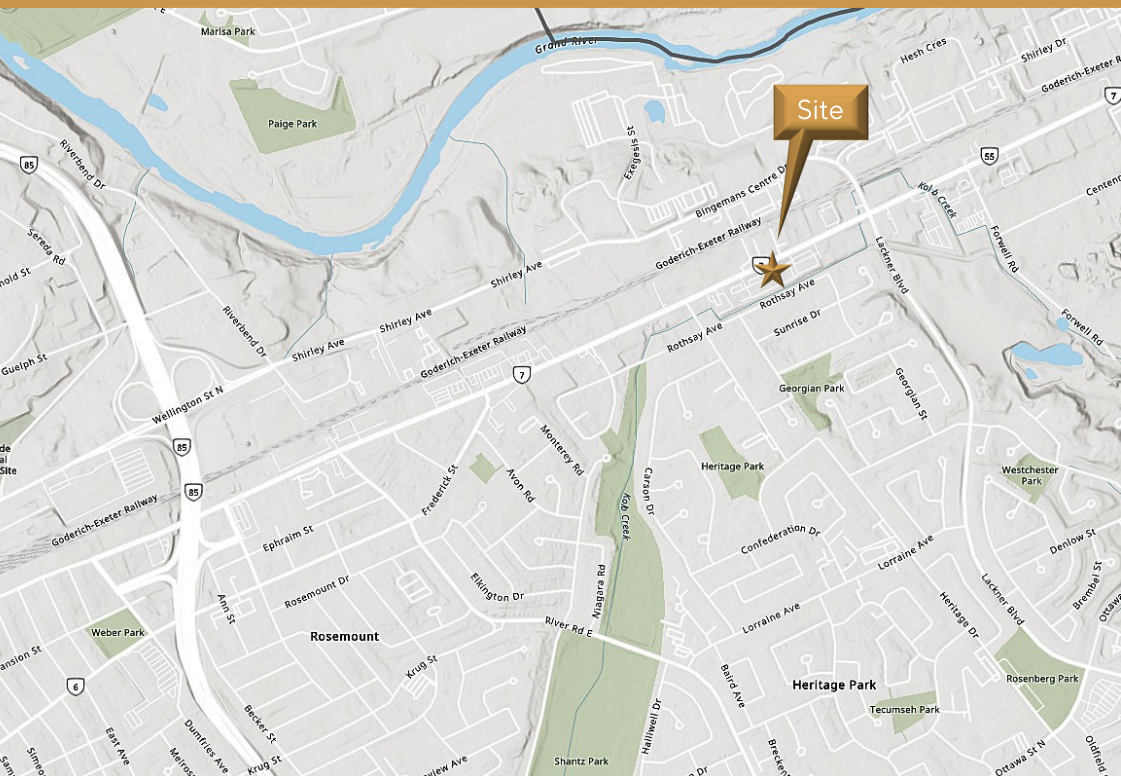
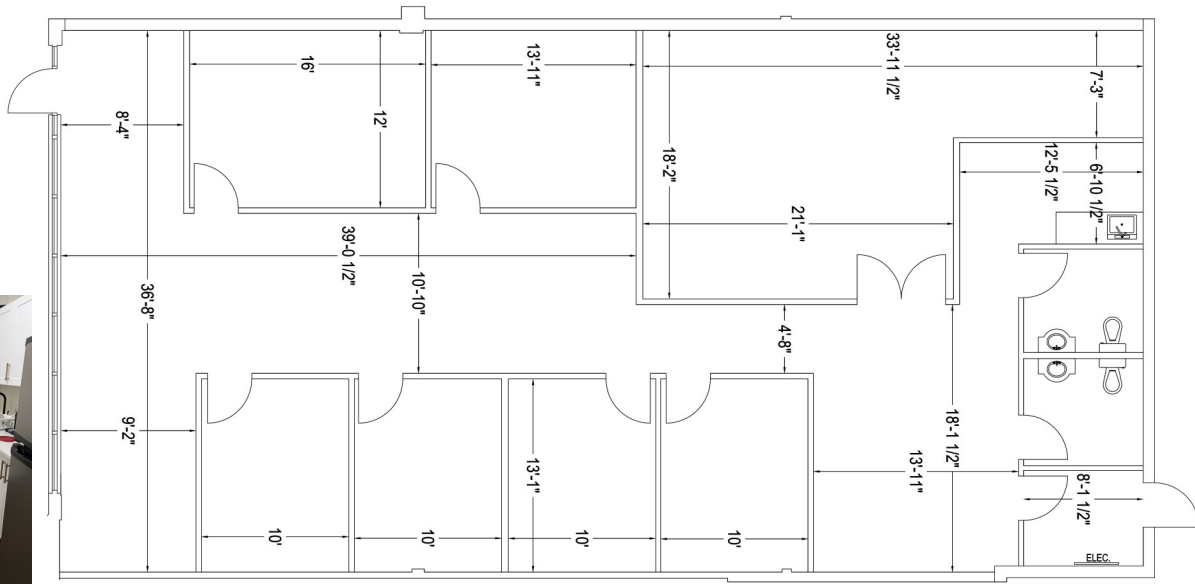
FOR LEASE

1373

WALK-UP RETAIL/ COMMERCIAL SERVICE SPACE

VICTORIA STREET NORTH, UNIT 2, KITCHENER

Unit 2 - 2,808 sq ft



MATT DICKSON
SALES REPRESENTATIVE
MATT@COUPALMARKOU.COM
519-742-7000 x 104

MICHAEL CONRAD
SALES REPRESENTATIVE
MIKE@COUPALMARKOU.COM
519-742-7000 x 105

**COUPAL MARKOU COMMERCIAL
REAL ESTATE INC**
150 KING STREET SOUTH
WATERLOO, ONTARIO N2J 1P6
OFFICE 519-742-7000
FAX 519-742-7070



This disclaimer shall apply to Coupal Markou Commercial Real Estate Inc., Brokerage, to include all employees and independent contractors. The information set out herein is for advertising purposes, and any images, assumptions, estimates and property details have been obtained from sources deemed to be reliable. No warranty or representation is made as to its accuracy, correctness and completeness of the information, being subject to errors, omissions, conditions, prior sale / lease, withdrawal or other changes without notice. The recipient of the information should conduct its own inquiries and investigations prior to placing any reliance upon the information. MLS