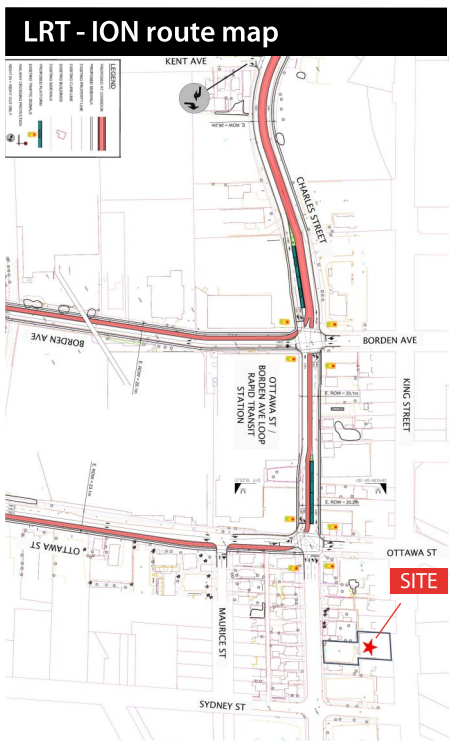
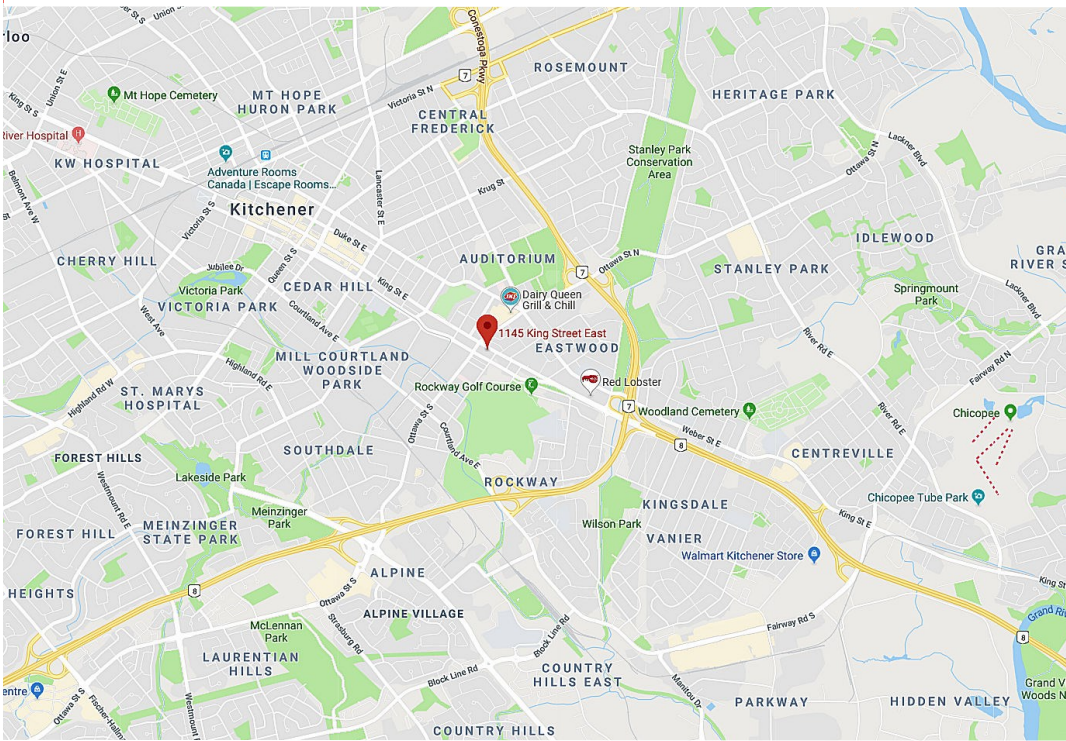


FOR LEASE  
DOWNTOWN OFFICE BUILDING  
1145 KING STREET EAST, KITCHENER



This disclaimer shall apply to Coupal Markou Commercial Real Estate Inc., Brokerage, to include all employees and independent contractors. The information set out herein is for advertising purposes, and any images, assumptions, estimates and property details have been obtained from sources deemed to be reliable. No warranty or representation is made as to its accuracy, correctness and completeness of the information, being subject to errors, omissions, conditions, prior sale / lease, withdrawal or other changes without notice. The recipient of the information should conduct its own inquiries and investigations prior to placing any reliance upon the information. MLS

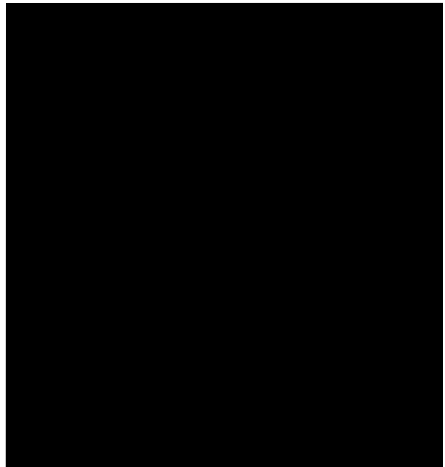
MATT DICKSON  
SALES REPRESENTATIVE  
[MATT@COUPALMARKOU.COM](mailto:MATT@COUPALMARKOU.COM)  
519-742-7000 x 104

MICHAEL CONRAD  
SALES REPRESENTATIVE  
[MIKE@COUPALMARKOU.COM](mailto:MIKE@COUPALMARKOU.COM)  
519-742-7000 x 105

COUPAL MARKOU COMMERCIAL  
REAL ESTATE INC.  
150 KING STREET SOUTH  
WATERLOO, ONTARIO N2J 1P6  
OFFICE 519-742-7000  
FAX 519-742-7070

**Coupal Markou**  
Commercial Real Estate Inc., Brokerage  
[www.coupalmarkou.com](http://www.coupalmarkou.com)

FOR LEASE  
DOWNTOWN OFFICE BUILDING  
1145 KING STREET EAST, KITCHENER



<b>AVAILABILITY</b> <b>LEASED</b> 202 - 695 SQ FT 203 - 952 SQ FT	* Situated on King Street East, near Ottawa Street and backing onto Charles Street East
<b>LEASE RATE</b> <b>LEASED</b> 202 - \$13.95/SQ FT NET 203 - \$12.95/SQ FT NET	* Located steps from LRT stop in desirable Downtown Kitchener
<b>ADDITIONAL RENT</b> \$14.67/SQ FT	* Fantastic light, private offices and open areas
<b>ZONING</b> MU-3	* Professionally managed building
<b>POSSESSION</b> NEGOTIABLE	* Signage and on-site parking available
	* Hydro, gas and janitorial included in additional rent

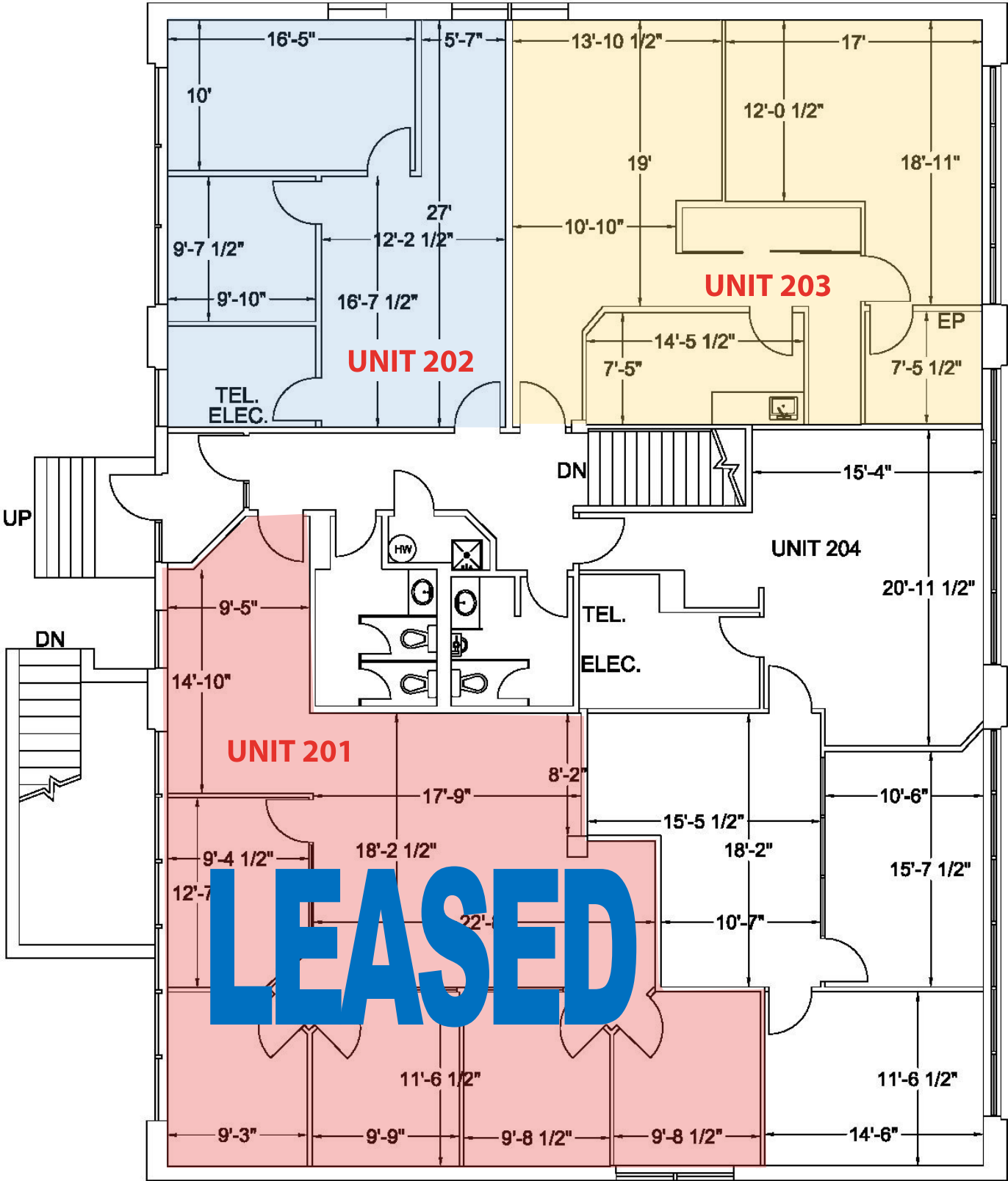
MATT DICKSON  
SALES REPRESENTATIVE  
[MATT@COUPALMARKOU.COM](mailto:MATT@COUPALMARKOU.COM)  
519-742-7000 x 104

MICHAEL CONRAD  
SALES REPRESENTATIVE  
[MIKE@COUPALMARKOU.COM](mailto:MIKE@COUPALMARKOU.COM)  
519-742-7000 x 105

COUPAL MARKOU COMMERCIAL  
REAL ESTATE INC.  
150 KING STREET SOUTH  
WATERLOO, ONTARIO N2J 1P6  
OFFICE 519-742-7000  
FAX 519-742-7070

**Coupal Markou**  
Commercial Real Estate Inc., Brokerage  
[www.coupalmarkou.com](http://www.coupalmarkou.com)





Unit 201 Interior



Unit 203 Interior

