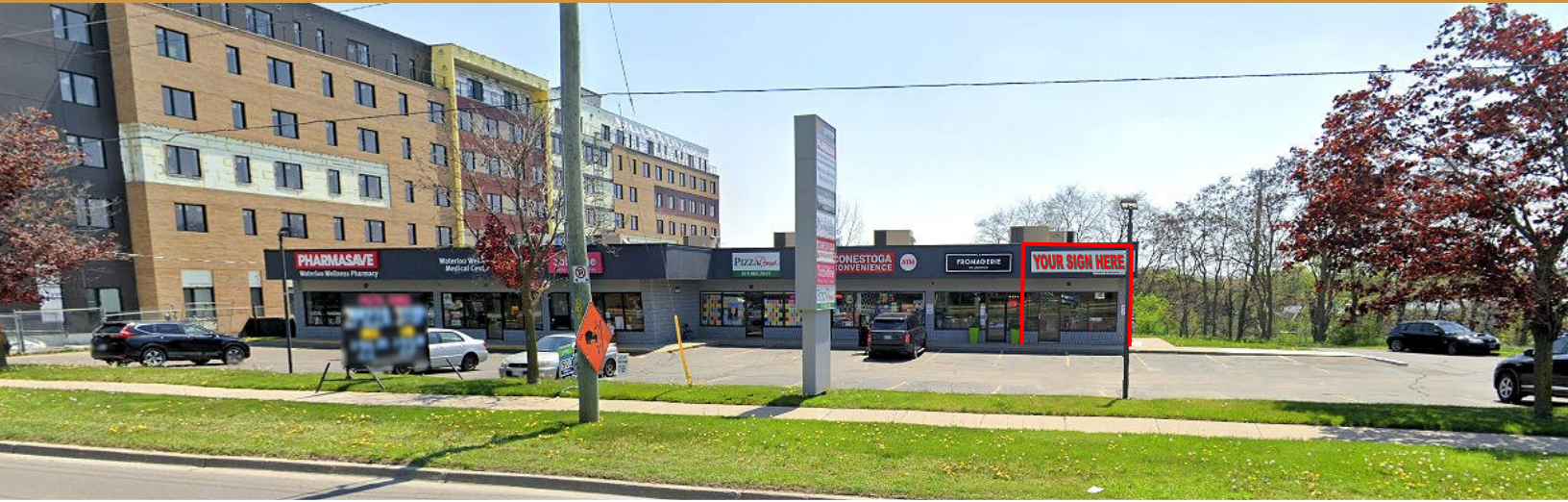


209

FOR LEASE SMALL END-CAP RETAIL SPACE

LEXINGTON ROAD, WATERLOO



AVAILABILITY

Unit G - 624 sq ft

LEASE RATE

\$32.00/sq ft

ADDITIONAL RENT

\$17.52/sq ft
Water Inc.

ZONING

C3-20

POSSESSION

May 2023

- * Located on Lexington Road, near the intersection of Davenport Road
- * Main floor/Walk up retail space
- * Join Tenants: Pharmasave, Pizza, Convenience store, and other Specialty retailers
- * Plaza recently undergone a complete facelift
- * Great signage, parking and excellent visibility
- * Zoning allows many uses
- * Gas and Hydro in addition to CAM's

MICHAEL CONRAD
SALES REPRESENTATIVE
MIKE@COUPALMARKOU.COM
519-742-7000 x 105

MATT DICKSON
SALES REPRESENTATIVE
MATT@COUPALMARKOU.COM
519-742-7000 x 104

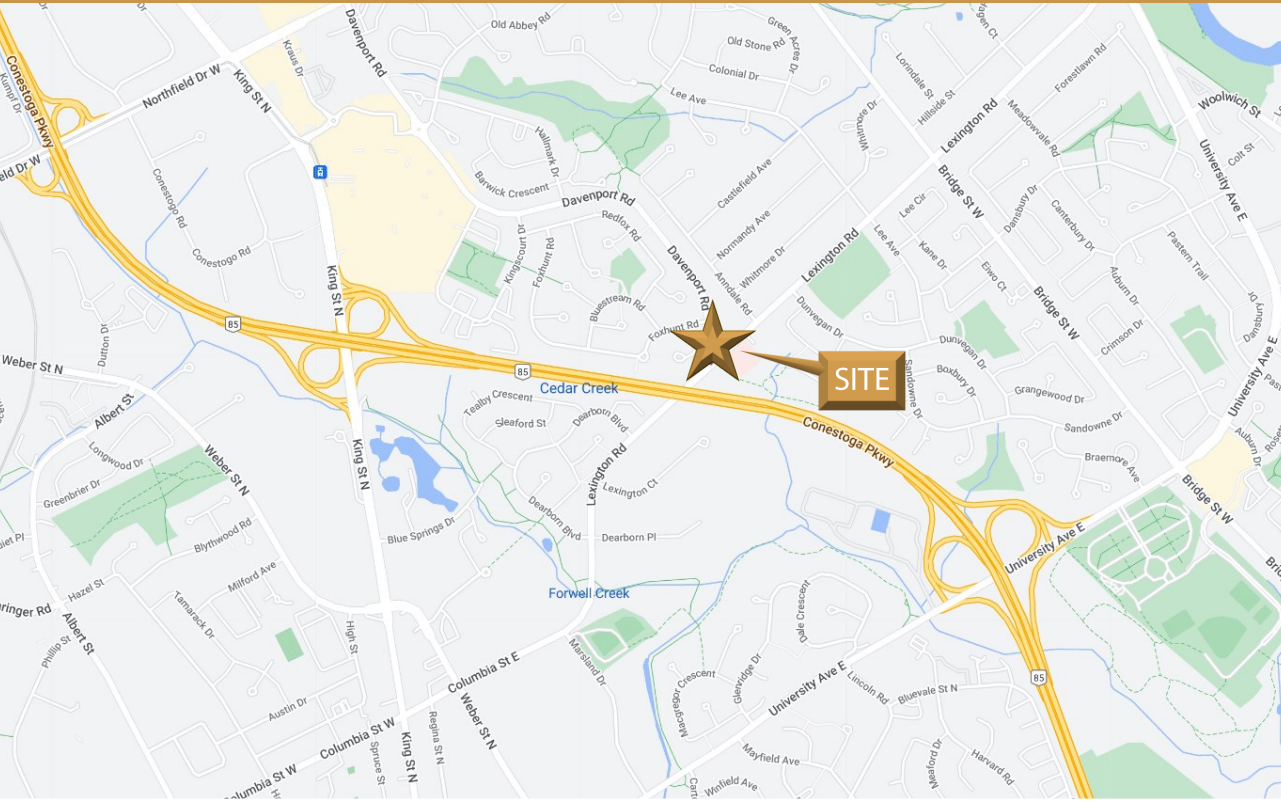
**COUPAL MARKOU COMMERCIAL
REAL ESTATE INC**
150 KING STREET SOUTH
WATERLOO, ONTARIO N2J 1P6
OFFICE 519-742-7000
FAX 519-742-7070

Coupal Markou
Commercial Real Estate Inc., Brokerage
www.coupalmarkou.com

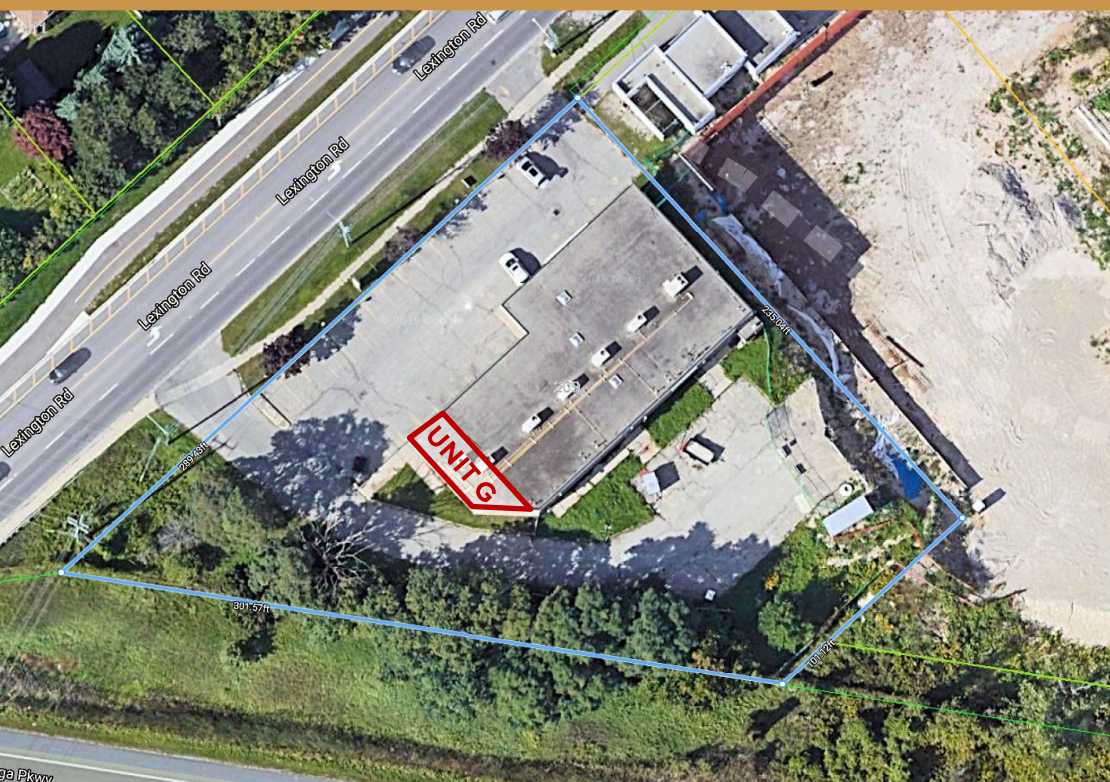
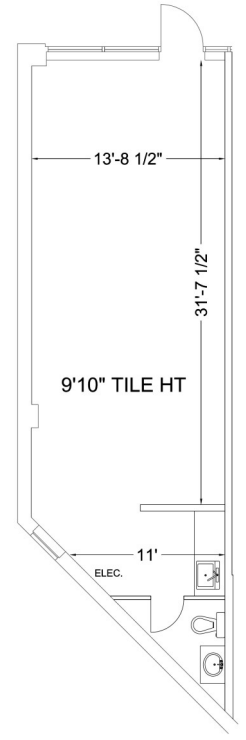
209

FOR LEASE SMALL END-CAP RETAIL SPACE

LEXINGTON ROAD, WATERLOO



Unit G - 624 Sq Ft



MICHAEL CONRAD
SALES REPRESENTATIVE
MIKE@COUPALMARKOU.COM
519-742-7000 x 105

MATT DICKSON
SALES REPRESENTATIVE
MATT@COUPALMARKOU.COM
519-742-7000 x 104

**COUPAL MARKOU COMMERCIAL
REAL ESTATE INC**
150 KING STREET SOUTH
WATERLOO, ONTARIO N2J 1P6
OFFICE 519-742-7000
FAX 519-742-7070



This disclaimer shall apply to Coupal Markou Commercial Real Estate Inc., Brokerage, to include all employees and independent contractors. The information set out herein is for advertising purposes, and any images, assumptions, estimates and property details have been obtained from sources deemed to be reliable. No warranty or representation is made as to its accuracy, correctness and completeness of the information, being subject to errors, omissions, conditions, prior sale / lease, withdrawal or other changes without notice. The recipient of the information should conduct its own inquiries and investigations prior to placing any reliance upon the information. MLS