

1111

FOR LEASE MAIN FLOOR LIGHT INDUSTRIAL SPACE

FRANKLIN BOULEVARD, UNIT 4, CAMBRIDGE



AVAILABILITY

UNIT 4 - 3,024 SQ FT

LEASE RATE

UNIT 4 - \$13.95/SQ FT

ADDITIONAL RENT

\$6.95/SQ FT

ZONING

M3

POSSESSION

IMMEDIATE

FEATURES

- * Located on the corner of Bishop and Franklin Blvd in Cambridge
- * Main floor light industrial/office space in a high profile building
- * Unit is equipped with a 9'x9' TL loading door
- * Utilities are in addition to CAMs
- * Offering great exposure and just minutes from Hwy 401
- * M-3 zoning allows many uses
- * Ample free on site parking
- * Façia signage
- * Pylon signage, subject to availability

MATT DICKSON
SALES REPRESENTATIVE
MATT@COUPALMARKOU.COM
519-742-7000 x 104

MICHAEL CONRAD
SALES REPRESENTATIVE
MIKE@COUPALMARKOU.COM
519-742-7000 x 105

COUPAL MARKOU COMMERCIAL
REAL ESTATE INC.
150 KING STREET SOUTH
WATERLOO, ONTARIO N2J 1P6
OFFICE 519-742-7000
FAX 519-742-7070

Coupal Markou

Commercial Real Estate Inc., Brokerage

www.coupalmarkou.com

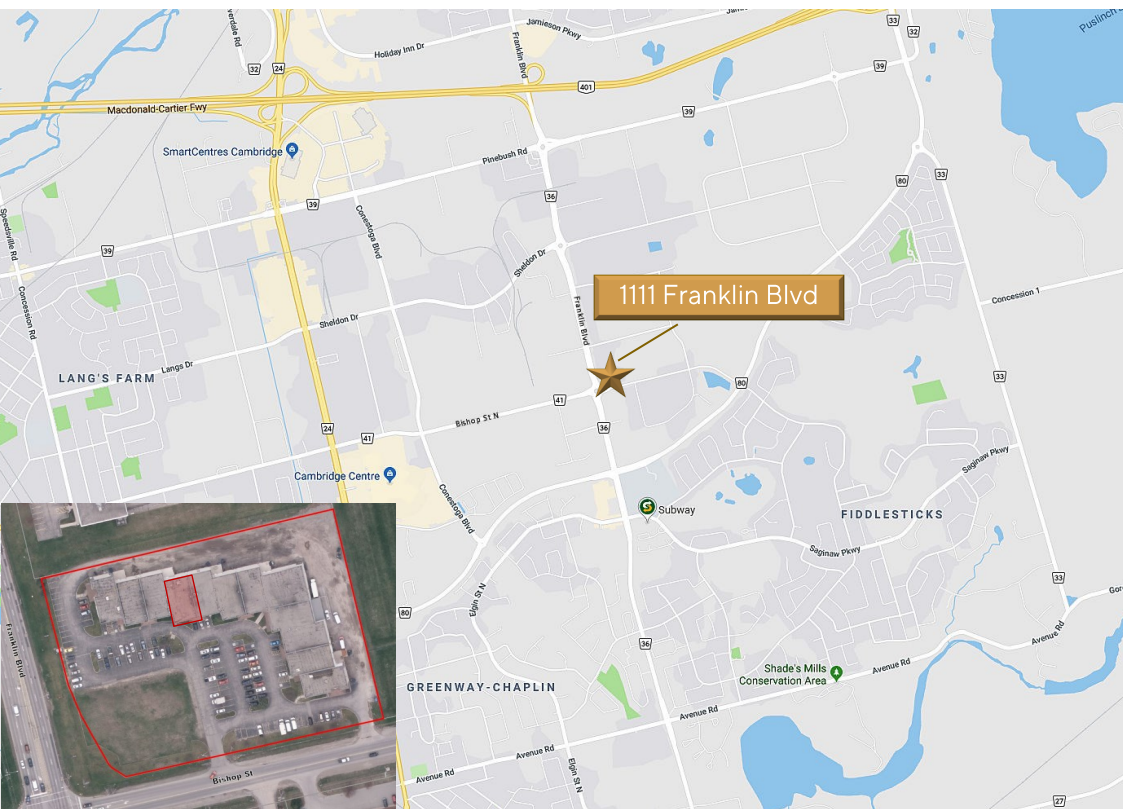
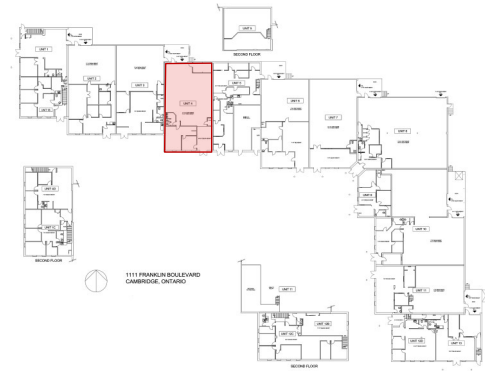
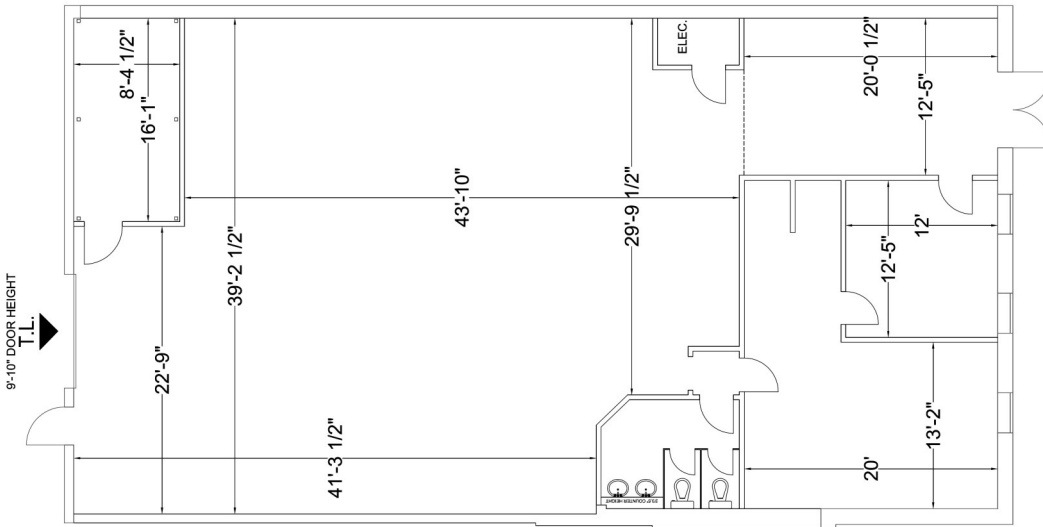
1111

FOR LEASE MAIN FLOOR LIGHT INDUSTRIAL SPACE

FRANKLIN BOULEVARD, UNIT 4, CAMBRIDGE

UNIT 4 - 3,024 SQ FT

KEY PLAN



MATT DICKSON
SALES REPRESENTATIVE
MATT@COUPALMARKOU.COM
519-742-7000 x 104

MICHAEL CONRAD
SALES REPRESENTATIVE
MIKE@COUPALMARKOU.COM
519-742-7000 x 105

COUPAL MARKOU COMMERCIAL
REAL ESTATE INC.
150 KING STREET SOUTH
WATERLOO, ONTARIO N2J 1P6
OFFICE 519-742-7000
FAX 519-742-7070



This disclaimer shall apply to Coupal Markou Commercial Real Estate Inc., Brokerage, to include all employees and independent contractors. The information set out herein is for advertising purposes, and any images, assumptions, estimates and property details have been obtained from sources deemed to be reliable. No warranty or representation is made as to its accuracy, correctness and completeness of the information, being subject to errors, omissions, conditions, prior sale / lease, withdrawal or other changes without notice. The recipient of the information should conduct its own inquiries and investigations prior to placing any reliance upon the information. MLS